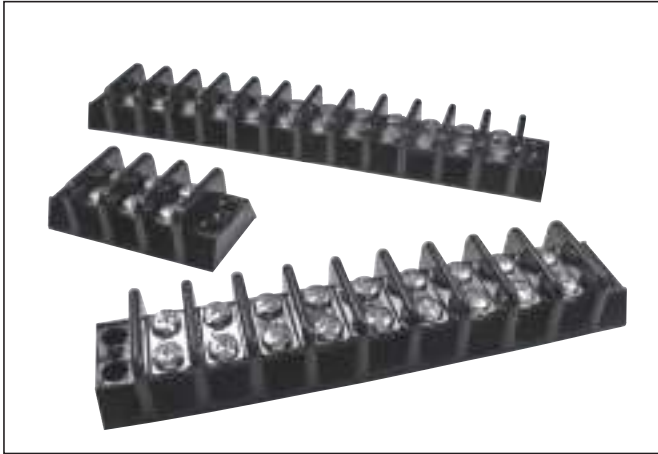


# Series 5600 .563" (14.29mm) Center-to-Center Spacing

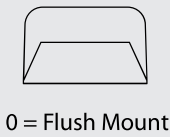


## Features:

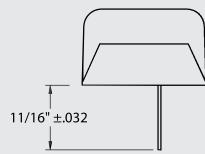
- Durable, Hi-Temp, phenolic is self-extinguishing, resists breakage and conforms to UL94V-0
- Terminal Flexibility is ideal for surface mount, sub-panel or chassis connections. One thru 22 terminals. 9/16" center-to-center spacing.
- Economical Closed-Back Design does not require costly insulation strip
- Broad Wire Range using 8-32 or 10-32 external twin screws, UL recognized for No. 22 AWG to No. 10 AWG. Variations include double solder lug, single solder lug, wire wrap and printed circuit pin
- UL Electrical Ratings  
50Amp up to 600VAC dependent on options
- Field Wiring to 40A
- Factory Wiring to 50A
- Recognition  
Various terminal types are UL recognized and CSA certified.

Dual Row

## Series 5600 Variations



0 = Flush Mount



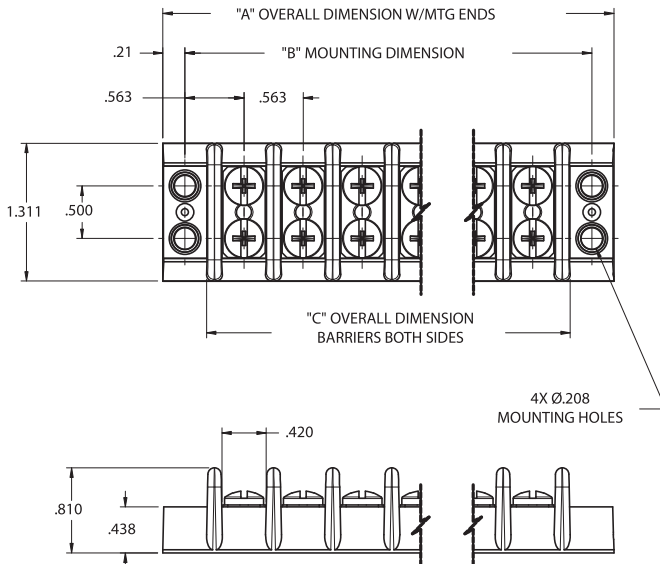
1 = Turret Type Solder Terminal

 **UL Standard 1059,**  
**Guide No. XCFR2**

 **CSA Guide**  
**22.2 No. 158**

 **Designed to meet IEC 947-7-1**

## Series 5600 Dimensions



BARRIER STYLE

## Specifications:

**Center-to-Center Spacing:** .563" (14.29mm)

**Wire Range:** No. 22AWG to No. 8AWG (No. 8 with ring lug for #10 screw only)

**No. of Terminals:** 1 thru 22

**Voltage Rating:** 600V

**Tightening Torque:** 16 in.-lbs. with #8 screws  
20 in.-lbs. with #10 screws

### Current Rating:

50A with #8 or #10 screw and ring lug  
40A with #10 screw  
35A with #8 Screw  
(Options may affect current rating)

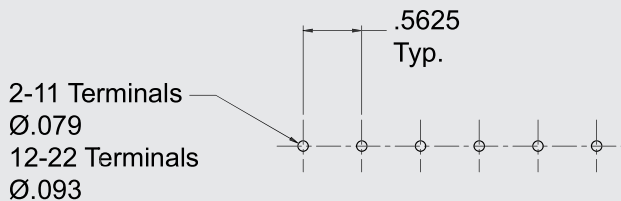
### Housing:

Material	Phenolic
Continuous Use	
Temp. (UL Index)	150°C (302°F)
Flammability Rating	94V-0
Water Absorption	
(24 hrs. % wt. gain)	.1%

### Breakdown Voltage:

Terminal - Terminal	7,500 Vrms
Terminal - Ground	6,000 Vrms

## PC BOARD DRILLING DIMENSIONS



# How to Order

56 0 0 0 0 00 0

## MOLDING DESIGN

- 1 = Barriers Both Sides
- 2 = w/ Mounting Ends
- 3 = Y Pin with Barriers
- 4 = Y Pin with Mounting Ends
- 5 Thru 9 to be assigned.

## TERMINATION DESIGN

Part No. Digit	Terminal Plate Type	Screw Type	Approval	*Field/Factory
0 =	STEEL	STEEL	UR/cUR	2
1 =	STEEL	**BRASS	UR	1

\*\* SEMS NOT AVAILABLE IN BRASS  
\*1 = FACTORY WIRING ONLY  
2 = FACTORY & FIELD WIRING

## SCREW SIZE

- 0 = 8-32 Thread
- 1 = 10-32 Thread

## SPECIALS OR OPTIONAL DESIGNS

- 0 = None
  - 1 = Double Tab, Flat (TB91)
  - 2 = Double Tab, 45° Bend (TB92)
  - 3 = Double Tab, 90° Bend (TB93)
  - 7 = Single Tab, Flat (TB97)
  - 8 = Single Tab, 45° Bend (TB98)
  - 9 = Single Tab, 90° Bend (TB99)
- A thru Z to be assigned by engineering for special configurations (optional jumper available)

## NUMBER OF POLES AVAILABLE

- Available
- 01-22 w/ Mounting Ends
- 01-22 w/ Barriers Both Ends

## SCREW TYPE

- 0 = Binder Head, Combo Slot, Zinc Plated, Steel
- 2 = Binder Head, Combo Slot, Nickel Plated, Brass
- 4 = Wire Clamp Sems, Combo Slot, Zinc Plated, Steel
- 6 = Quick Connect Tabs Supplied w/ Binder Head (see special options)

Number of Terminals	Dimensions	
	"A" (Min-Max) Overall Dim. w/ Mounting Ends	"B" (Min-Max) Mounting Dim.
1	1.551-1.539	1.131-1.119
2	2.116-2.100	1.694-1.682
3	2.680-2.660	2.258-2.242
4	3.245-3.221	2.823-2.803
5	3.809-3.781	3.387-3.363
6	4.374-4.342	3.952-3.924
7	4.938-4.902	4.516-4.484
8	5.503-5.463	5.081-5.045
9	6.067-6.023	5.645-5.605
10	6.632-6.584	6.210-6.166
11	7.196-7.144	6.774-6.726
12	7.761-7.705	7.339-7.287
13	8.325-8.265	7.903-7.847
14	8.888-8.828	8.468-8.408
15	9.452-9.388	9.030-8.970
16	10.017-9.949	9.595-9.531
17	10.581-10.509	10.159-10.091
18	11.146-11.070	10.724-10.652
19	11.710-11.630	11.288-11.212
20	12.273-12.193	11.853-11.773
21	12.837-12.753	12.415-12.335
22	13.402-13.314	12.978-12.898

Dimensions shown are ± 0.030"



Double Sided

Single Sided

TB91

TB97

TB92

TB98

TB93

TB99

## Series 5600 Accessories

### QUICK CONNECT TERMINALS

.250" x .032" quick connect tabs available in 6 different styles. Tin-plated brass tabs are held in place by terminal screws. Terminal blocks can accommodate 1 to 6 terminations per pole. Factory assembled or shipped bulk.

### WIRE CLAMPS

Wire clamp captivated screws eliminate the need for lugs. Available for both 8-32 & 10-32 thread options, these screws accept up to No. 10AWG wire and may be factory installed or shipped bulk.



### TERMINAL BLOCK JUMPERS

Jumpers constructed of plated brass permit connections of 2 poles



Dual Row

BARRIER STYLE

Dimensions are in inches and millimeters unless otherwise specified. Values in parentheses are metric equivalents.