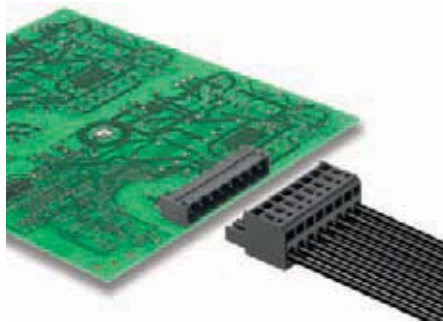


## Male connectors with THR solder connection

### SL-SMT 5.08/90G SL-SMT 5.00/90G



High-temperature-resistant, 90° angled, closed end male connector. Packed in box or tape on reel. In tape form with 1.5 mm solder pin optimised for automatic assembly; 3.2 mm solder pin suitable for reflow and wave soldering. Stable up to 290°C (2 x 30 s), which exceeds the requirements of EN 61760-1. These male connectors can be labelled and coded.

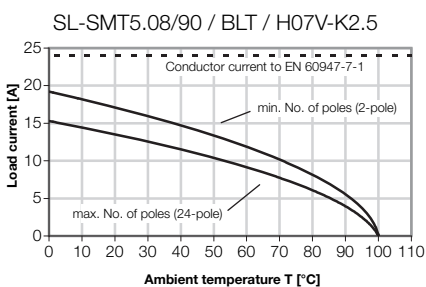
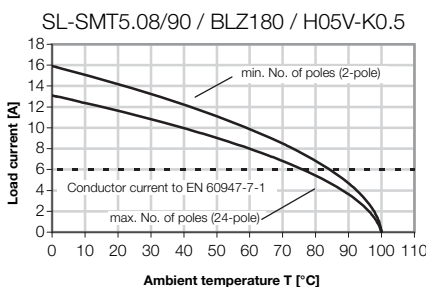
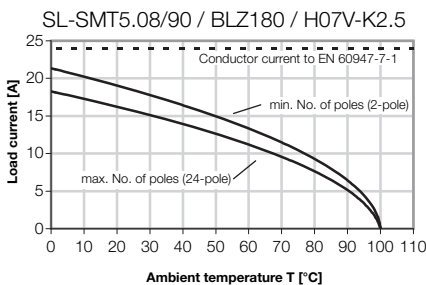
- 400 V (IEC) / 300 V (UL)
- 19 A (IEC) / 15 A (UL)

### Technical data

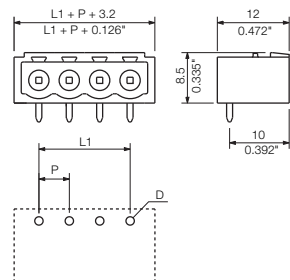
Rated data to IEC 60664-1 / IEC 61984			
Clamping range, max.	mm <sup>2</sup>		
Solid H05(07) V-U	mm <sup>2</sup>		
Stranded H07 V-R	mm <sup>2</sup>		
Flexible H05(07) V-K	mm <sup>2</sup>		
Flexible with ferrule	mm <sup>2</sup>		
Ferrule with plastic collar	mm <sup>2</sup>		
Stripping length	mm		
Screwdriver blade	mm		
according to norm			
Tightening torque range	Nm		
Rated current at ambient temperature			
		20°C	40°C
	A	19	16
Overvoltage category			
		III	III
Pollution severity			
		3	2
Rated voltage	V	250	320
Rated impulse voltage	kV	4	4
UL 1059 rated data			
		B	C
Nominal voltage	V	300	300
Rated current	A	15	10
AWG conductor			
CSA C22.2 rated data			
		B	C
Rated voltage	V	300	300
Rated current	A	15	10
AWG conductor			
Material data			
Type of insulating material		LCP GF	
Flammability class acc. UL94		V-0	
Contact base material		CuSn	
Material of contact surface		tinned	

- #### Information
- Additional colours on request
  - Gold-plated contact surfaces on request
  - Rated current related to rated cross-section and min. No. of poles.
  - Hole diameter D = 1.4+0.1mm
  - Hole diameter D = 1.5+0.1mm for 9 poles
  - P on drg. = pitch
  - Rated data refer only to the component itself. Clearance and creepage distances to other components are to be designed in accordance with the relevant application standards.

### Derating curve



### SL-SMT 5.08/90G Box SL-SMT 5.00/90G Box



### Ordering data

Solder pin length	1.5 mm	3.2 mm		
Colour of plastic	black	black		
Pitch 5.08 mm				
Poles	L1 mm (inch)	Qty.	Order No.	Order No.
2	5.08 (0.200)	100	1775002001	1780180000
3	10.16 (0.400)	100	1775012001	1780190000
4	15.24 (0.600)	100	1775022001	1780200000
5	20.32 (0.800)	50	1775032001	1780210000
6	25.40 (1.000)	50	1775042001	1780220000
7	30.48 (1.200)	50	1775052001	1780230000
8	35.56 (1.400)	50	1775062001	1780240000
9	40.64 (1.600)	50	1775072001	1780250000
10	45.72 (1.800)	50	1775082001	1780260000
11	50.80 (2.000)	50	1775092001	1780270000
12	55.88 (2.200)	50	1775102001	1780280000
13	60.96 (2.400)	50	1775112001	1780290000
14	66.04 (2.600)	50	1775122001	1780300000
15	71.12 (2.800)	50	1775132001	1780310000
16	76.20 (3.000)	50	1775142001	1780320000
17	81.28 (3.200)	20	1775152001	1780330000
18	86.36 (3.400)	20	1775162001	1780340000
19	91.44 (3.600)	20	1775172001	1780350000
20	96.52 (3.800)	20	1775182001	1780360000
21	101.60 (4.000)	20	1775192001	1780370000
22	106.68 (4.200)	20	1775202001	1780380000
23	111.76 (4.400)	20	1775212001	1780390000
24	116.84 (4.600)	20	1775222001	1780400000
Pitch 5.00 mm				
Poles	L1 mm (inch)	Qty.	Order No.	Order No.
2	5.00 (0.197)	100	1797080000	1840120000
3	10.00 (0.394)	100	1797090000	1840130000
4	15.00 (0.591)	100	1797100000	1840140000
5	20.00 (0.787)	50	1797110000	1840150000
6	25.00 (0.984)	50	1797120000	1840160000
7	30.00 (1.181)	50	1797130000	1840170000
8	35.00 (1.378)	50	1797140000	1840180000
9	40.00 (1.575)	50	1797150000	1840190000
10	45.00 (1.772)	50	1797160000	1840200000
11	50.00 (1.969)	50	1797170000	1840210000
12	55.00 (2.165)	50	1797180000	1840220000
13	60.00 (2.362)	50	1797190000	1840230000
14	65.00 (2.559)	50	1797200000	1840240000
15	70.00 (2.756)	50	1797210000	1840250000
16	75.00 (2.953)	50	1797220000	1840260000
17	80.00 (3.150)	20		1840270000
18	85.00 (3.346)	20		1840280000
19	90.00 (3.543)	20		1840290000
20	95.00 (3.740)	20		1840300000
21	100.00 (3.937)	20		1840310000
22	105.00 (4.134)	20		1840320000
23	110.00 (4.331)	20		1840330000
24	115.00 (4.528)	20		1840340000