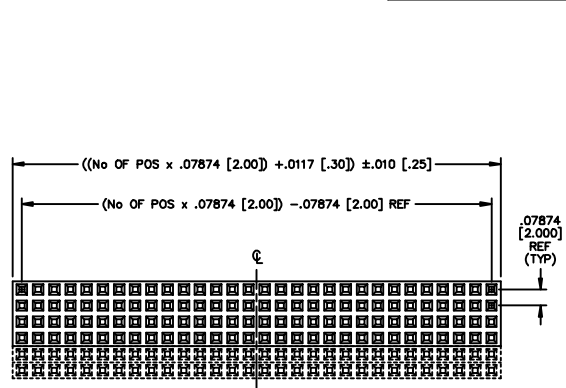


REV. S

DIMENSIONS ARE IN INCHES		UNLESS OTHERWISE NOTED	TOLERANCES ARE:	TITLE: ELEVATED 2MM C.L. ASM SOCKET	DWG NO: YTE-1XX-XX-XXX-X-XXX-XXX-XX
ONE PLACE DECIMALS ± .1[2.5]	THREE PLACE DECIMALS ± .005[.127]	ANGLES ± 2°			SHEET 1 OF 2
TWO PLACE DECIMALS ± .01[.25]	FOUR PLACE DECIMALS ± .0020[.051]				



YTE-1XX-XX-XXX-X-XXX-XXX-XX

POSITION SPECIFICATION
-02 THRU -50 POSITIONS PER ROW (SEE NOTE 1)

LEAD STYLE SPEC
-02: USE C-79-02-XXX
-03: USE C-79-53-XXX

PLATING SPECIFICATION
-F: FLASH SELECTIVE GOLD (USE C-79-XX-F)
-L: LIGHT SELECTIVE (USE C-79-XX-L)
-G: GOLD (USE C-79-XX-G)
-S: SELECTIVE (USE C-79-XX-S)
-M: MEDIUM SELECTIVE (USE C-79-XX-M)
-H: HEAVY GOLD (USE C-79-XX-H)
-TL: TIN LEAD (USE C-79-XX-TL)
-STL: SELECTIVE TIN LEAD (USE C-79-XX-STL)
-SM: HEAVY SELECTIVE GOLD, MATTE TIN TAIL (USE C-79-XX-S)
-LM: LIGHT SELECTIVE GOLD, MATTE TIN TAIL (USE C-79-XX-L)
-FM: FLASH SELECTIVE GOLD, MATTE TIN TAIL (USE C-79-XX-F)
-MM: GOLD, MATTE TIN TAIL (USE C-79-XX-MM)

OPTION
** -MW: METAL WASHER (SEE FIG. 2, SHT. 2)
(5 POS. MIN, 30 POS MAX)
(.090 [2.29] MIN, .482 [12.19] MAX TAIL)

POLARIZATION OPTION
-XXX INDICATES POSITION (SEE FIG 3, SHT. 2) (USE PK-07)

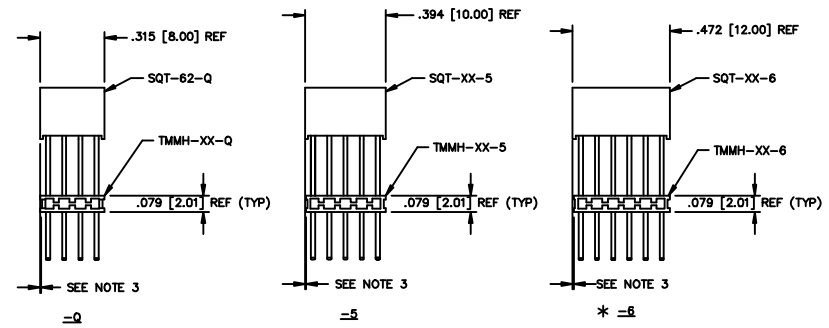
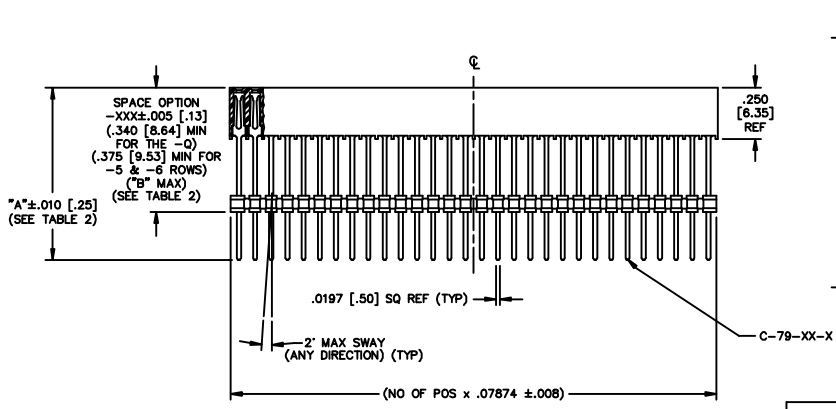
SPACE OPTION
.340 [8.64] MIN FOR -Q ROW
.375 [9.53] MIN FOR -5 & -6 ROWS
"B" MAX (SEE TABLE 2)

ROW SPECIFICATION
-Q: QUAD (SEE -Q)
-5: FIVE (SEE -5)
-6: SIX (SEE -6)

**** - MW OPTION, DO NOT DESIGN IN. SAMTEC WILL ONLY SUPPORT EXISTING BUSINESS 2/11/02.**

DO NOT SCALE FROM THIS PRINT

FIG. 1



LEAD STYLE	"A"	"B"
-02	.850 [21.59]	.800 [20.32]
-03	.458 [11.63]	.408 [10.36]

- NOTE:
1. TOOLING TO BE DESIGNED TO PRODUCE UP TO 61 POSITIONS.
 2. THIS NOTE WAS DELETED.
 3. TMMH BODIES ARE NOT TO BE MORE THAN ±.005 [.13] FROM PLANE SET BY SQT BODY.

PROPRIETARY NOTE
THIS DOCUMENT CONTAINS INFORMATION CONFIDENTIAL AND PROPRIETARY TO SAMTEC INC. AND SHALL NOT BE REPRODUCED OR TRANSMITTED TO OTHER DOCUMENTS OR DISCLOSED TO OTHERS OR USED FOR ANY PURPOSE OTHER THAN THAT FOR WHICH IT WAS OBTAINED WITHOUT THE EXPRESSED WRITTEN CONSENT OF SAMTEC INC.

CONTACT: PHOS BRONZE		EXISPROD\ASSEMBLY\2MM YTE-ASM
MATERIAL: LCP COLOR: BLACK		520 PARK EAST BLVD. NEW ALBANY, INDIANA 47150 PHONE (812) 944-6733 P.O. BOX 1147 CODE 55322
MADE BY: BRATCHER 1-26-99	YTE-1XX-XX-XXX-X-XXX-XXX-XX	SHEET 1 OF 2

PLOT SCALE: 1=.44 / DIMSCALE: .3

REV S

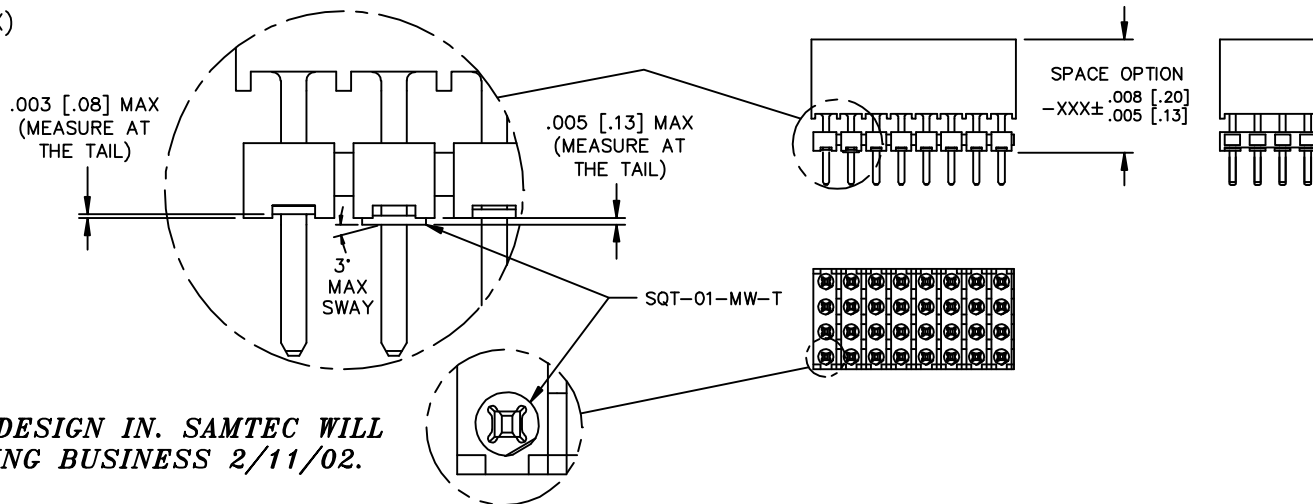
FIG. 2

-MW: METAL WASHER
(ONE PER POSITION)
(5 POS. MIN, 30 POS. MAX)

UNLESS OTHERWISE NOTED
DIMENSIONS ARE IN INCHES
TOLERANCES ARE:
ONE PLACE DECIMALS ± .1[2.5] THREE PLACE DECIMALS ± .005[.127]
TWO PLACE DECIMALS ± .01[.25] FOUR PLACE DECIMALS ± .0020[.051]
ANGLES ± 2°

TITLE: ELEVATED
2MM C.L. ASM
SOCKET

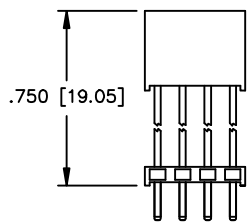
DWG NO: YTE-1XX-XX-XXX-X-XXX-XXX-XX
SHEET 2 OF 2



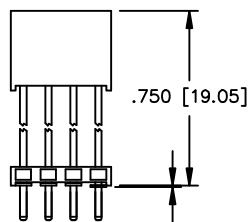
DO NOT SCALE
FROM THIS PRINT

**** - MW OPTION, DO NOT DESIGN IN. SAMTEC WILL ONLY SUPPORT EXISTING BUSINESS 2/11/02.**

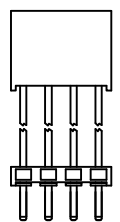
-02 STYLE ONLY



IN PROCESS 1



IN PROCESS 2



REPRESS TO SPACE
OPTION NEEDED

IN PROCESS 3

TABLE 1				
STYLE	ROW	NO. OF POS.	PKG TUBE	TUBE PLUG
-02	-Q	15-50	PT-1-24-03-51	TP-13
-03	-Q	15-50	PT-1-24-16-29	TP-07
-02, -03	-Q	02-14	LAYER PACKAGING	
-02	-5	15-50	PT-1-24-01-56	TP-31
-03	-5	15-50	PT-1-24-01-08	TP-13
-02, -03	-5	02-14	LAYER PACKAGING	
-02	-6	15-50	PT-1-24-02-74	TP-13
-03	-6	15-50	PT-1-24-01-08	TP-13
-02, -03	-6	02-14	LAYER PACKAGING	

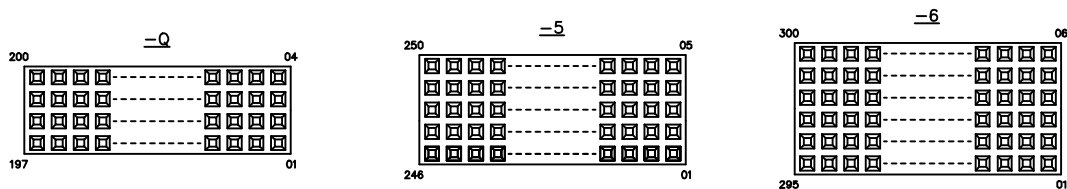


FIG. 3

POLARIZATION OPTION LOCATION
INSERT PK-07 INTO SPECIFIED
POSITION AND BREAK OFF TAB

NOTE:
1. MINIMUM CONTACT
RETENTION: 0.5 LB PER PIN.

PROPRIETARY NOTE

THIS DOCUMENT CONTAINS INFORMATION
CONFIDENTIAL AND PROPRIETARY TO
SAMTEC INC. AND SHALL NOT BE
REPRODUCED OR TRANSMITTED IN
ANY FORM OR BY ANY MEANS,
ELECTRONIC OR MECHANICAL,
INCLUDING PHOTOCOPYING, RECORDING,
OR BY ANY INFORMATION STORAGE
AND RETRIEVAL SYSTEM, WITHOUT THE
WRITTEN CONSENT OF SAMTEC INC.

PLOT SCALE: 1=.44 / DIMSCALE: .3

samtec

EXISPROD\ASSEMBLY\2MM
YTE-ASM2

520 PARK EAST BLVD. NEW ALBANY, INDIANA 47150
PHONE (812) 944-6733 P.O. BOX 1147
CODE 55322

MADE BY:
BRATCHER 1-26-99

YTE-1XX-XX-XXX-X-XXX-XXX-XX
SHEET 2 OF 2