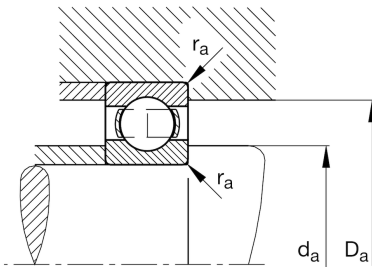
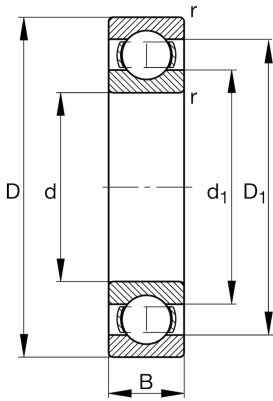
**FAG****619/630-M**

Deep groove ball bearing

Schaeffler ID:
0190984800000Deep groove ball bearing 619..-M, single
row, solid brass cage

Technical information

**Main Dimensions & Performance Data**

d	24,803 in	Bore diameter
D	33,465 in	Outside diameter
B	3,937 in	Width
C_r	141.636,691 lbf	Basic dynamic load rating, radial
C_{0r}	299.010,791 lbf	Basic static load rating, radial
C_{ur}	6.519,784 lbf	Fatigue load limit, radial
n_G	1.220 1/min	Limiting speed
n_{gr}	840 1/min	Reference speed
	361,558 lbs	$\{Weight\}$

Mounting dimensions

$d_{a \min}$	25,709 in	Minimum diameter shaft shoulder
$D_{a \max}$	32,559 in	Maximum diameter of housing shoulder
$r_{a \max}$	0,197 in	Maximum fillet radius

Dimensions

r_{\min}	0,236 in	Minimum chamfer dimension
D_1	30,783 in	Shoulder diameter outer ring
d_1	27,583 in	Shoulder diameter inner ring

Temperature range

T_{\min}	-22 °F	Operating temperature min.
T_{\max}	392 °F	Operating temperature max.

Calculation factors

f_0	16,5	Calculation factor
-------	------	--------------------