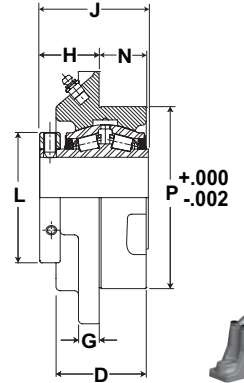
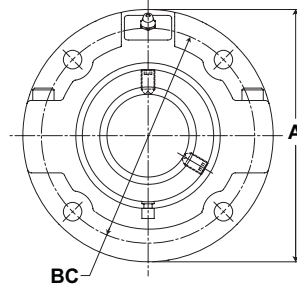




- Rolling Elements:** Tapered Roller
- Housing:** Cast Iron Piloted Flange
- Self Alignment:** +/- 3 Degrees
- Lock:** Setscrew, Single Collar
- Seal:** Felt
- Optional Seal:** Single Lip Contact
- Temperature:** -20°F to 220°F



Mtd. Tapered Bearings



RFP Series Piloted Flange Cartridge Units - Single Lock Collar

| Bore Diameter | | Part No. | Bearing Insert No. | Basic Dynamic Rating lb/N | Dimensions inch / mm | | | | | | | | | | Unit Wt. lb/kg |
|---------------|-----|-----------|--------------------|---------------------------|----------------------|--------|--------|-------|---------|---------|---------|--------|--------|-----------|----------------|
| | | | | | A | B.C. | D | G | H | J | L | N | P | Bolt Size | |
| inch | mm | | | | | | | | | | | | | | |
| 1 3/16 | | RFP-103 | RCIA-103 | 2975 | 5 | 4 1/8 | 1 3/4 | 7/16 | 1 5/16 | 2 3/8 | 2 1/4 | 7/8 | 3 3/8 | 3/8 | 5.5 |
| 1 1/4 | | RFP-104 | RCIA-104 | 13233 | 127.0 | 104.8 | 44.5 | 11.1 | 33.3 | 60.3 | 57.2 | 22.2 | 85.7 | 3/8 | 2.49 |
| 1 3/8 | | RFP-106 | RCIA-106 | 4760 | 5 1/4 | 4 3/8 | 2 | 1/2 | 1 1/2 | 2 17/32 | 2 5/8 | 15/16 | 3 5/8 | 3/8 | 6.8 |
| 1 7/16 | | RFP-107 | RCIA-107 | 21174 | 133.4 | 111.1 | 50.8 | 12.7 | 38.1 | 64.3 | 66.7 | 23.8 | 92.1 | 3/8 | 3.08 |
| 1 1/2 | | RFP-108 | RCIA-108 | 6140 | 6 1/8 | 5 1/8 | 2 1/4 | 1/2 | 1 9/16 | 2 27/32 | 2 7/8 | 1 1/8 | 4 1/4 | 7/16 | 10.1 |
| 1 5/8 | | RFP-110 | RCIA-110 | 27312 | 155.6 | 130.2 | 57.2 | 12.7 | 39.7 | 72.2 | 73.0 | 28.6 | 108.0 | 7/16 | 4.58 |
| 1 11/16 | | RFP-111 | RCIA-111 | | | | | | | | | | | | |
| 1 3/4 | 45 | RFP-112 | RCIA-112 | | | | | | | | | | | | |
| 1 15/16 | 45 | RFP-45MM | RCI-45MM | 8070 | 6 3/8 | 5 3/8 | 2 5/16 | 9/16 | 1 9/16 | 2 61/64 | 3 1/4 | 1 9/16 | 4 1/2 | 7/16 | 11.6 |
| | 50 | RFP-115 | RCIA-115 | 35897 | 161.9 | 136.5 | 58.7 | 14.3 | 39.7 | 75.0 | 82.6 | 39.7 | 114.3 | 7/16 | 5.26 |
| | 50 | RFP-50MM | RCI-50MM | | | | | | | | | | | | |
| 2 | 55 | RFP-200 | RCIA-200 | | | | | | | | | | | | |
| 2 3/16 | 55 | RFP-55MM | RCI-55MM | 8570 | 7 1/8 | 6 | 2 1/2 | 9/16 | 1 11/16 | 3 1/8 | 3 5/8 | 1 5/16 | 5 | 1/2 | 14.5 |
| | 55 | RFP-203 | RCIA-203 | 38121 | 181.0 | 152.4 | 63.5 | 14.3 | 42.9 | 79.4 | 92.1 | 33.3 | 127.0 | 1/2 | 6.58 |
| 2 1/4 | 60 | RFP-204 | RCIA-204 | | | | | | | | | | | | |
| 2 7/16 | 60 | RFP-60MM | RCI-60MM | 9030 | 7 5/8 | 6 1/2 | 2 3/4 | 5/8 | 1 13/16 | 3 5/16 | 3 15/16 | 1 7/16 | 5 1/2 | 1/2 | 19 |
| | 60 | RFP-207 | RCIA-207 | 40167 | 193.7 | 165.1 | 69.9 | 15.9 | 46.0 | 84.1 | 100.0 | 36.5 | 139.7 | 1/2 | 8.62 |
| | 65 | RFP-208 | RCIA-208 | | | | | | | | | | | | |
| 2 1/2 | 65 | RFP-65MM | RCI-65MM | | | | | | | | | | | | |
| 2 11/16 | 70 | RFP-211 | RCIA-211 | | | | | | | | | | | | |
| 2 3/4 | 70 | RFP-212 | RCIA-212 | | | | | | | | | | | | |
| | 70 | RFP-70MM | RCI-70MM | 9630 | 8 3/4 | 7 1/2 | 2 7/8 | 3/4 | 2 | 3 11/16 | 4 23/32 | 1 9/16 | 6 3/8 | 5/8 | 26.7 |
| | 70 | RFP-215 | RCIA-215 | 42836 | 222.3 | 190.5 | 73.0 | 19.1 | 50.8 | 93.7 | 119.9 | 39.7 | 161.9 | 5/8 | 12.11 |
| 2 15/16 | 75 | RFP-75MM | RCI-75MM | | | | | | | | | | | | |
| 3 | 75 | RFP-300 | RCIA-300 | | | | | | | | | | | | |
| 3 3/16 | 80 | RFP-80MM | RCI-80MM | | | | | | | | | | | | |
| 3 1/4 | 80 | RFP-303 | RCIA-303 | | | | | | | | | | | | |
| | 80 | RFP-304 | RCIA-304 | | | | | | | | | | | | |
| | 80 | RFP-80MM | RCI-80MM | | | | | | | | | | | | |
| 3 7/16 | 85 | RFP-85MM | RCI-85MM | 15320 | 10 1/4 | 8 5/8 | 3 3/8 | 7/8 | 2 7/16 | 4 3/16 | 5 7/16 | 1 5/8 | 7 3/8 | 3/4 | 42.6 |
| 3 1/2 | 85 | RFP-307 | RCIA-307 | 68147 | 260.4 | 219.1 | 85.7 | 22.2 | 61.9 | 106.4 | 138.1 | 41.3 | 187.3 | 3/4 | 19.32 |
| | 85 | RFP-308 | RCIA-308 | | | | | | | | | | | | |
| | 85 | RFP-90MM | RCI-90MM | | | | | | | | | | | | |
| 3 15/16 | 95 | RFP-95MM | RCI-95MM | | | | | | | | | | | | |
| 4 | 100 | RFP-315 | RCIA-315 | | | | | | | | | | | | |
| | 100 | RFP-100MM | RCI-100MM | 20980 | 10 7/8 | 9 3/8 | 4 3/8 | 15/16 | 2 11/16 | 5 1/4 | 5 15/16 | 2 7/16 | 8 1/8 | 3/4 | 55.2 |
| | 100 | RFP-400 | RCIA-400 | 93324 | 276.2 | 238.1 | 111.1 | 23.8 | 68.3 | 133.4 | 150.8 | 61.9 | 206.4 | 3/4 | 25.04 |
| 4 7/16 | 110 | RFP-110MM | RCI-110MM | | | | | | | | | | | | |
| 4 1/2 | 110 | RFP-407 | RCIA-407 | 25750 | 13 1/2 | 11 3/4 | 4 5/8 | 1 | 3 1/32 | 5 1/2 | 6 13/32 | 2 3/8 | 10 1/4 | 3/4 | 91 |
| | 110 | RFP-408 | RCIA-408 | 114542 | 342.9 | 298.5 | 117.5 | 25.4 | 77.0 | 139.7 | 162.7 | 60.3 | 260.4 | 3/4 | 41.28 |
| | 110 | RFP-115MM | RCI-115MM | | | | | | | | | | | | |
| 4 15/16 | 120 | RFP-120MM | RCI-120MM | 35520 | 14 3/4 | 12 3/4 | 5 3/8 | 1 1/4 | 2 31/32 | 6 13/64 | 7 13/32 | 2 7/8 | 11 | 7/8 | 115 |
| 5 | 125 | RFP-125MM | RCI-125MM | 158001 | 374.7 | 323.9 | 136.5 | 31.8 | 75.4 | 157.6 | 188.1 | 73.0 | 279.4 | 7/8 | 52.16 |
| | 125 | RFP-415 | RCIA-415 | | | | | | | | | | | | |
| 5 | 125 | RFP-500 | RCIA-500 | | | | | | | | | | | | |