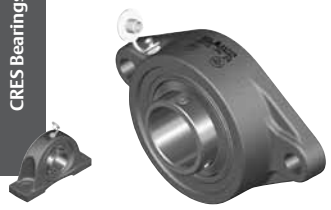
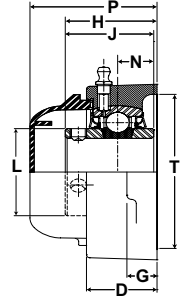
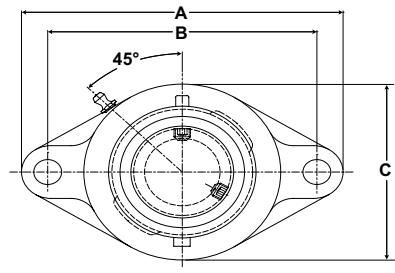


# SEALMASTER® PN Gold Mounted Ball Bearings

CRFS Bearings



- Duty:** Standard
- Housing:** 316 Passivated Stainless Steel  
Two Bolt Flange
- Self-Alignment:** +/- 2 Degrees
- Lock:** Setscrew
- Seal:** HPS
- Temperature:** -20° to 220°F
- Grease:** Sealmaster GoldPlex-FG



## CRFSTS-PN Series 2 Bolt Flange Setscrew Locking

Bore Diameter		Part No.	Bearing Insert No.	Basic Dynamic Rating lb/N	Dimensions inch/mm											Bolt Size	Unit Wt. lb/kg	Open Cap	Closed Cap	Backside Shield
inch	mm				A	B	C	D	G	H	J	L	N	P	T					
3/4	-	CRFSTS-PN12	PN-12	2611 11614	4 13/32	3 17/32	2 3/8	31/32	7/16	1 9/32	1 7/32	1 13/16	1/2	2 19/64	2	3/8	1.20 .54	ECO-12	ECC-12	2BSS-12
-	20	CRFSTS-PN204	PN-204		111.9	89.7	60.3	24.6	11.1	32.5	31.0	30.2	12.7	58.3	50.8					
1	-	CRFSTS-PN16	PN-16	2801 12459	4 7/8	3 57/64	2 3/4	1 5/64	17/32	1 7/16	1 3/8	1 3/8	9/16	2 7/16	2 3/8	7/16	1.60 .73	ECO-16	ECC-16	2BSS-16
-	25	CRFSTS-PN205	PN-205		123.8	98.8	69.9	27.4	13.5	36.5	34.9	34.9	14.3	61.9	60.3					
1 3/16	-	CRFSTS-PN19	PN-19	4381 19488	5 9/16	4 19/32	3 1/4	1 7/32	17/32	1 9/16	1 1/2	1 19/32	5/8	2 9/16	2 7/8	7/16	2.36 1.07	ECO-19	ECC-19	2BSS-19
1 1/4	-	CRFSTS-PN20R	PN-20R															ECO-20R		2BSS-20R
-	30	CRFSTS-PN206	PN-206															ECO-19		2BSS-19
1 1/4	-	CRFSTS-PN20	PN-20	5782 25720	6 1/8	5 1/8	3 3/4	1 11/32	9/16	1 3/4	1 11/16	1 55/64	11/16	2 3/4	3 5/16	1/2	3.20 1.45	ECO-20	ECC-23	2BSS-20
1 3/8	-	CRFSTS-PN22	PN-22															ECO-23		2BSS-22
1 7/16	-	CRFSTS-PN23	PN-23																	2BSS-23
-	35	CRFSTS-PN207	PN-207															N/A		
1 1/2	-	CRFSTS-PN24	PN-24	7340 32650	6 3/4	5 21/32	4 1/8	1 1/2	9/16	2 1/64	1 15/16	2 1/16	3/4	3 1/64	3 1/2	1/2	4.50 2.04	ECO-24	ECC-24	2BSS-24
1.575	40	CRFSTS-PN208	PN-208															2BSS-208		
1 11/16	-	CRFSTS-PN27	PN-27	7901 35145	7 1/16	5 27/32	4 3/8	1 9/16	9/16	2 3/64	1 15/16	2 19/64	3/4	3 3/64	3 3/8	9/16	5.00 2.27	ECO-27	ECC-27	2BSS-27
1 3/4	-	CRFSTS-PN28	PN-28															N/A		N/A
-	45	CRFSTS-PN209	PN-209																	N/A
1 15/16	-	CRFSTS-PN31	PN-31	7889 35092	7 7/16	6 3/16	4 9/16	1 9/16	9/16	2 5/32	2 1/32	2 15/32	3/4	3 1/16	4	9/16	5.40 2.45	ECO-31	ECC-31	2BSS-31
2	-	CRFSTS-PN32R	PN-32R															N/A		
-	50	CRFSTS-PN210	PN-210															N/A		
2	-	CRFSTS-PN32	PN-32	9752 43379	8 1/2	7 1/4	5 1/4	1 3/4	13/16	2 5/16	2 3/16	2 23/32	7/8	3 13/32	4 1/4	5/8	8.40 3.81	ECO-35	ECC-35	N/A
2 3/16	-	CRFSTS-PN35	PN-35															2BSS-35		
-	55	CRFSTS-PN211	PN-211																	

Metric dimensions for reference only.  
 Not all parts are available from stock. Please contact customer service for availability (800) 626-2120.  
 For more information on bearing capabilities outside of our standard offering, please contact Application Engineering (800) 626-2093.