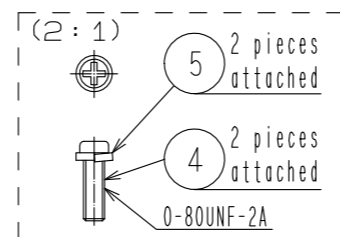
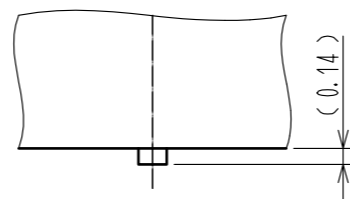


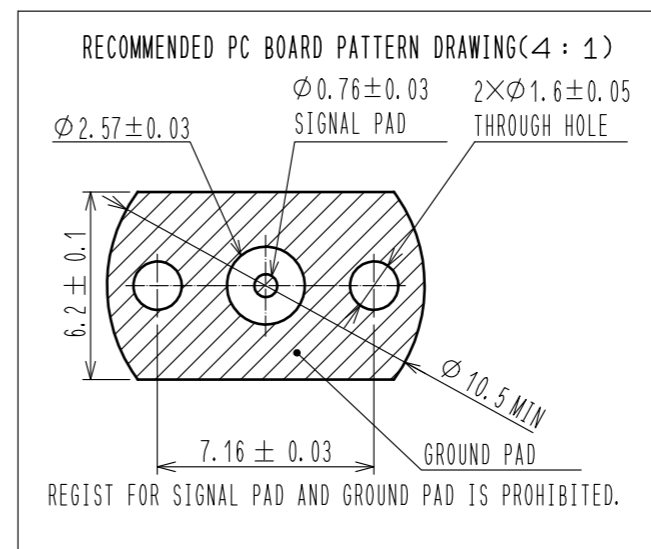
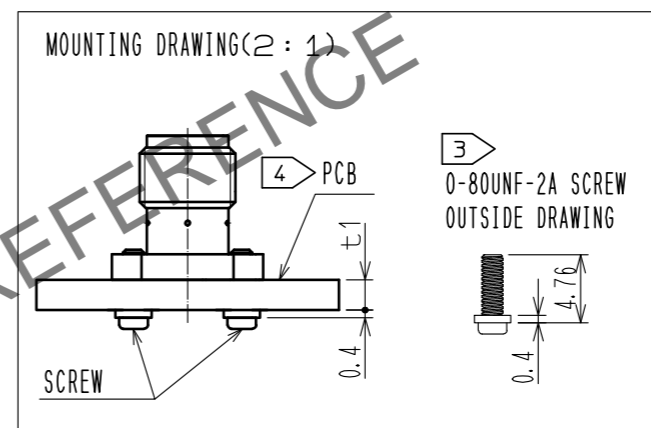
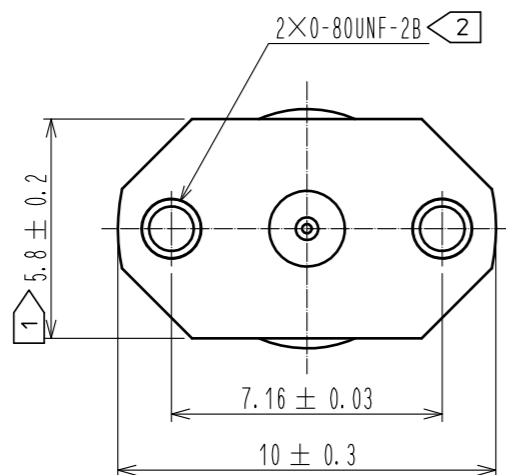
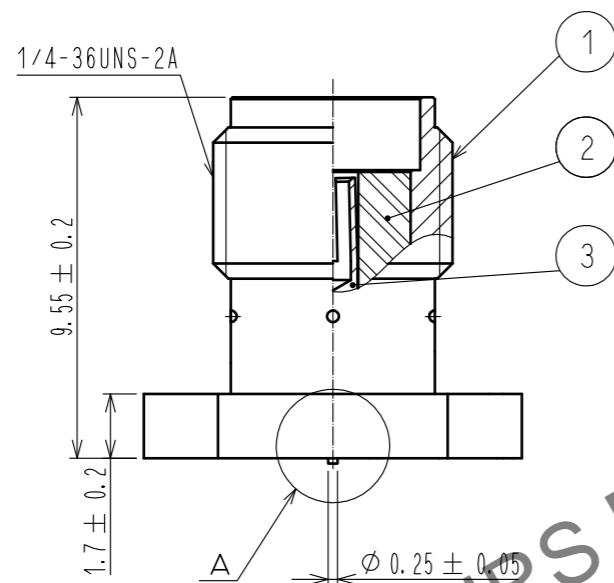
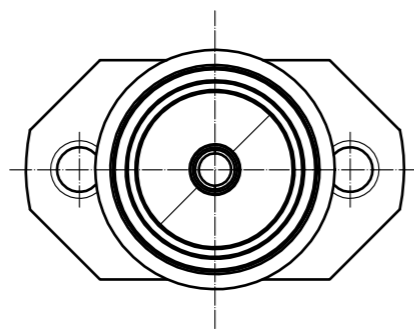
Unified screw thread type

Attached screw thread

A(10:1)



- NOTES
- ① When the mating connector, please hold milling area of 5.8 ± 0.2 with a wrench.
 - ② 0-80UNF-2B Screw tightening torque is $0.09N \cdot m$. Please tighten the screws evenly when mounting the connectors to ensure stable electrical contact.
 - ③ Please use attached screw and washer for PCB mounting. Attached screw and washer apply PCB thickness $t1=0.7$ to $2.65mm$.
 - ④ Recommended PCB thickness $t1$ is greater than $0.7mm$.
 - 5. This connector should be use for test port only.



RoHS COMPLIANT

3	BERYLLIUM COPPER	GOLD PLATING	5	STAINLESS STEEL	Spring washer
2	PTFE		4	STEEL	0-80UNF-2A Screw
1	BRASS	GOLD PLATING			
NO.	MATERIAL	FINISH . REMARKS	NO.	MATERIAL	FINISH . REMARKS
UNITS	mm	SCALE	5 : 1	COUNT	1
DESCRIPTION OF REVISIONS			DESIGNED	CHECKED	DATE
DIS-D-00003461			RO. YOKOYAMA	TO. KATAYAMA	18. 08. 31
APPROVED : TO. KATAYAMA 17. 04. 10			DRAWING NO. EDC-339103-01-00		
CHECKED : TO. KATAYAMA 17. 04. 10			PART NO. HRM(G)-300-468B-1(01)		
DESIGNED : RO. YOKOYAMA 17. 04. 10			CODE NO. CL323-0924-8-01		
DRAWN : RO. YOKOYAMA 17. 04. 10			1/1		

In case of consideration for using Automotive equipment / device which demand high reliability, kindly contact our sales window correspondents.

Jul.1.2023 Copyright 2023 HIROSE ELECTRIC CO., LTD. All Rights Reserved.

Mouser Electronics

Authorized Distributor

Click to View Pricing, Inventory, Delivery & Lifecycle Information:

[Hirose Electric:](#)

[HRM\(G\)-300-468B-1\(01\)](#)