

1-332070-4 ✓ ACTIVE

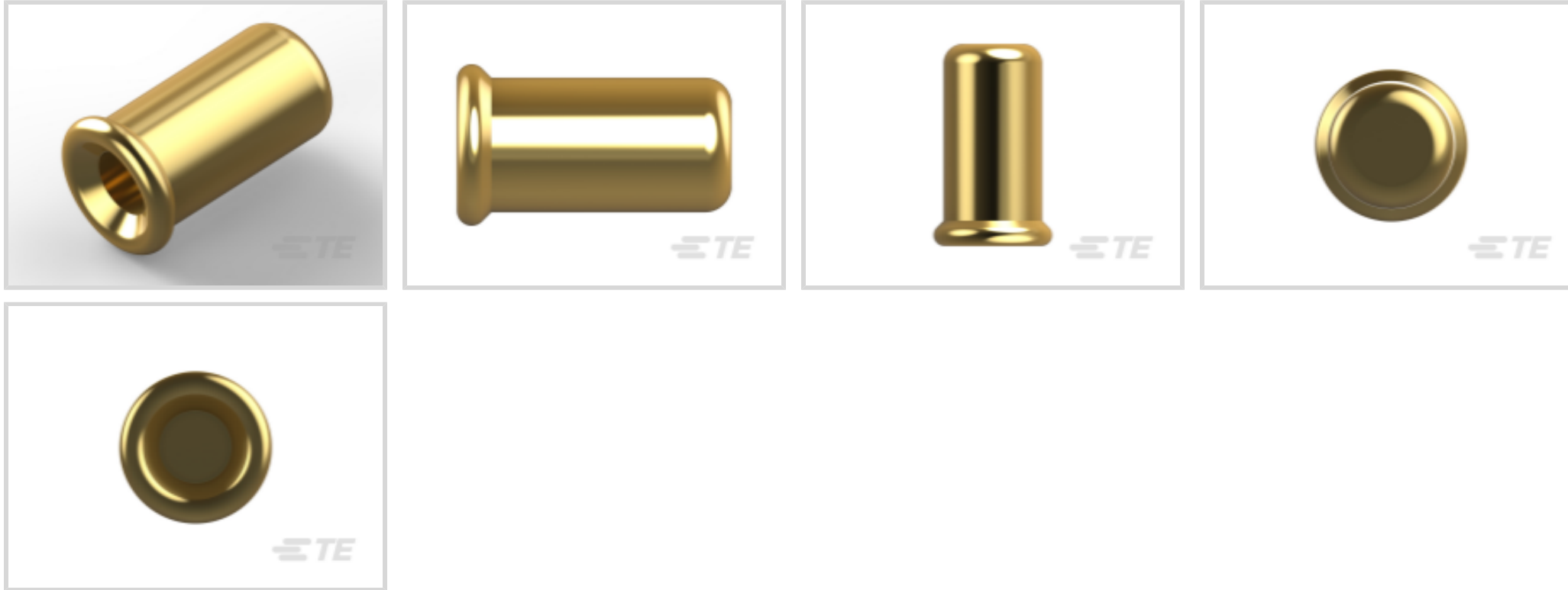
TE Internal #: 1-332070-4

Socket Length 3.63 mm [.143 in], PCB Hole Diameter 1.83 mm [.072 in], Open Bottom, .653 mm<sup>2</sup> Wire Size, 19 AWG Wire Size, Cable-to-Board, Pin Sockets

[View on TE.com >](#)



Connectors > Socket Connectors > Pin Sockets > Miniature Spring Sockets: Open Bottom, Beryllium Copper, 6.5A



Socket Length: 3.63 mm [.143 in]

PCB Hole Diameter: 1.83 mm [.072 in]

Socket Sleeve Style: Open Bottom

Wire Size: .653 mm<sup>2</sup>

[All Miniature Spring Sockets: Open Bottom, Beryllium Copper, 6.5A \(9\)](#)

## Features

### Dimensions

Socket Length	3.63 mm [.143 in]
PCB Hole Diameter	1.83 mm [.072 in]
Wire Size	.653 mm <sup>2</sup>
Mating Pin Diameter Range	.94 – 1.02 mm [.037 – .04 in]
PCB Thickness (Recommended)	.79 – 3.18 mm [.031 – .125 in]

### Product Type Features

Socket Sleeve Style	Open Bottom
Connector System	Cable-to-Board
Sealable	No
Connector & Contact Terminates To	Printed Circuit Board

### Contact Features

Contact Current Rating (Max)	6.5 A
Contact Spring Plating Material	Gold
Contact Base Material	Beryllium Copper



Contact Mating Area Plating Material Thickness	30 µm[30 µin]
--	---------------

Contact Spring Plating Thickness	.762 µm[30 µin]
----------------------------------	-----------------

### Operation/Application

Circuit Application	Power & Signal
---------------------	----------------

Solder Process Feature	None
------------------------	------

### Usage Conditions

Operating Temperature Range	-65 – 125 °C[-85 – 257 °F]
-----------------------------	----------------------------

### Other

EU RoHS Compliance	Compliant
--------------------	-----------

EU ELV Compliance	Compliant
-------------------	-----------

Spring Material	Beryllium Copper
-----------------	------------------

### Configuration Features

Compatible With Wire & Cable Type	Discrete Wire
-----------------------------------	---------------

### Body Features

Sleeve Plating Material	Gold Flash over Nickel
-------------------------	------------------------

Sleeve Material	Copper
-----------------	--------

### Termination Features

Termination Method to PCB	Through Hole - Press-Fit
---------------------------	--------------------------

Termination Method to Wire & Cable	Solder
------------------------------------	--------

Insertion Method	Hand/Semi-Automatic
------------------	---------------------

### Packaging Features

Packaging Method	Loose Piece, Bag
------------------	------------------

Packaging Quantity	2000
--------------------	------

### Product Compliance

[For compliance documentation, visit the product page on TE.com>](#)

EU RoHS Directive 2011/65/EU	Compliant
------------------------------	-----------

EU ELV Directive 2000/53/EC	Compliant
-----------------------------	-----------

China RoHS 2 Directive MIIT Order No 32, 2016	No Restricted Materials Above Threshold
---	---

EU REACH Regulation (EC) No. 1907/2006	Current ECHA Candidate List: JUNE 2024 (241) Candidate List Declared Against: JUNE 2024 (241)
--	--



Does not contain REACH SVHC

Halogen Content

Low Halogen - Br, Cl, F, I < 900 ppm per homogenous material. Also BFR/CFR/PVC Free

Solder Process Capability

Pin-in-Paste capable to 260°C

Product Compliance Disclaimer

This information is provided based on reasonable inquiry of our suppliers and represents our current actual knowledge based on the information they provided. This information is subject to change. The part numbers that TE has identified as EU RoHS compliant have a maximum concentration of 0.1% by weight in homogenous materials for lead, hexavalent chromium, mercury, PBB, PBDE, DBP, BBP, DEHP, DIBP, and 0.01% for cadmium, or qualify for an exemption to these limits as defined in the Annexes of Directive 2011/65/EU (RoHS2). Finished electrical and electronic equipment products will be CE marked as required by Directive 2011/65/EU. Components may not be CE marked. Additionally, the part numbers that TE has identified as EU ELV compliant have a maximum concentration of 0.1% by weight in homogenous materials for lead, hexavalent chromium, and mercury, and 0.01% for cadmium, or qualify for an exemption to these limits as defined in the Annexes of Directive 2000/53/EC (ELV). Regarding the REACH Regulation, the information TE provides on SVHC in articles for this part number is based on the latest European Chemicals Agency (ECHA) 'Guidance on requirements for substances in articles' posted at this URL: <https://echa.europa.eu/guidance-documents/guidance-on-reach>

## Compatible Parts



TE Part # 1-332070-7  
SOCKET,MIN-SPR W/KO AU SER-4



TE Part # 1-5331677-3  
SOCKET,MIN-SPR SN SER-3U SER-3



TE Part # 1-332070-3  
SOCKET,MIN-SPR W/H AU SER-4

## Customers Also Bought



TE Part #5747845-5  
15 MSFL RCPT RA 318 (SL,FM,BL)



TE Part #5747833-4  
15 MSFL PLUG RA 590 (IN,FM,BL)



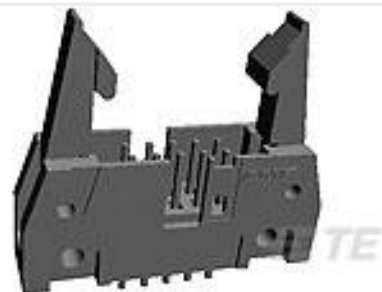
TE Part #1532209-1  
M83513/01-AN, MCKS-N1-B-9PS



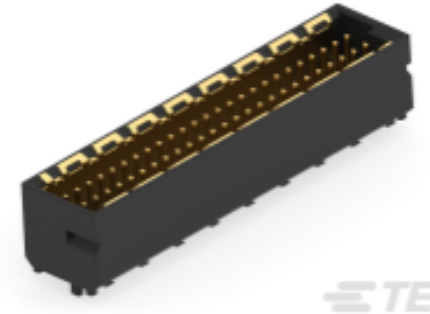
TE Part #5-104693-5  
50 50/50 HDR DRST SFMNT.390 SN



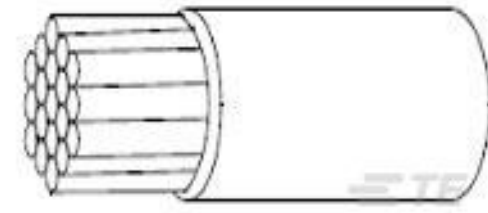
TE Part #5-534237-6  
08 MODII VRT SR CE 100/115



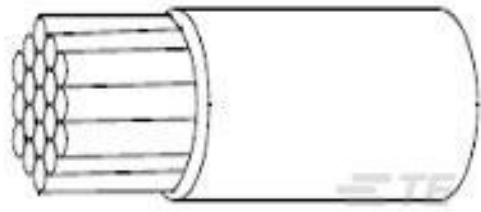
TE Part #3-5499206-0  
A/L UNIV HDR 50P VERT LG LAT B



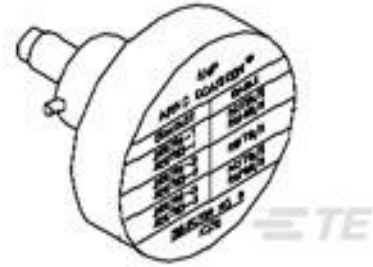
TE Part #224557-E  
MSPEED 50 M SMD M2 \* AB VV 137  
094 \* \* E



TE Part #799635-000  
22759/44-20-2



TE Part #828183-000  
22759/44-20-9



TE Part #1-601966-3  
POSITIONER

## Documents

### Product Drawings

[SOCKET,MIN-SPR W/H AU SER-4](#)

English

### CAD Files

Customer View Model

[ENG\\_CVM\\_CVM\\_1-332070-4\\_AA.2d\\_dxf.zip](#)

English

[3D PDF](#)

3D

Customer View Model

[ENG\\_CVM\\_CVM\\_1-332070-4\\_AA.3d\\_igs.zip](#)

English

Customer View Model

[ENG\\_CVM\\_CVM\\_1-332070-4\\_AA.3d\\_stp.zip](#)

English

By downloading the CAD file I accept and agree to the [Terms and Conditions](#) of use.

### Product Specifications

[Application Specification](#)

English