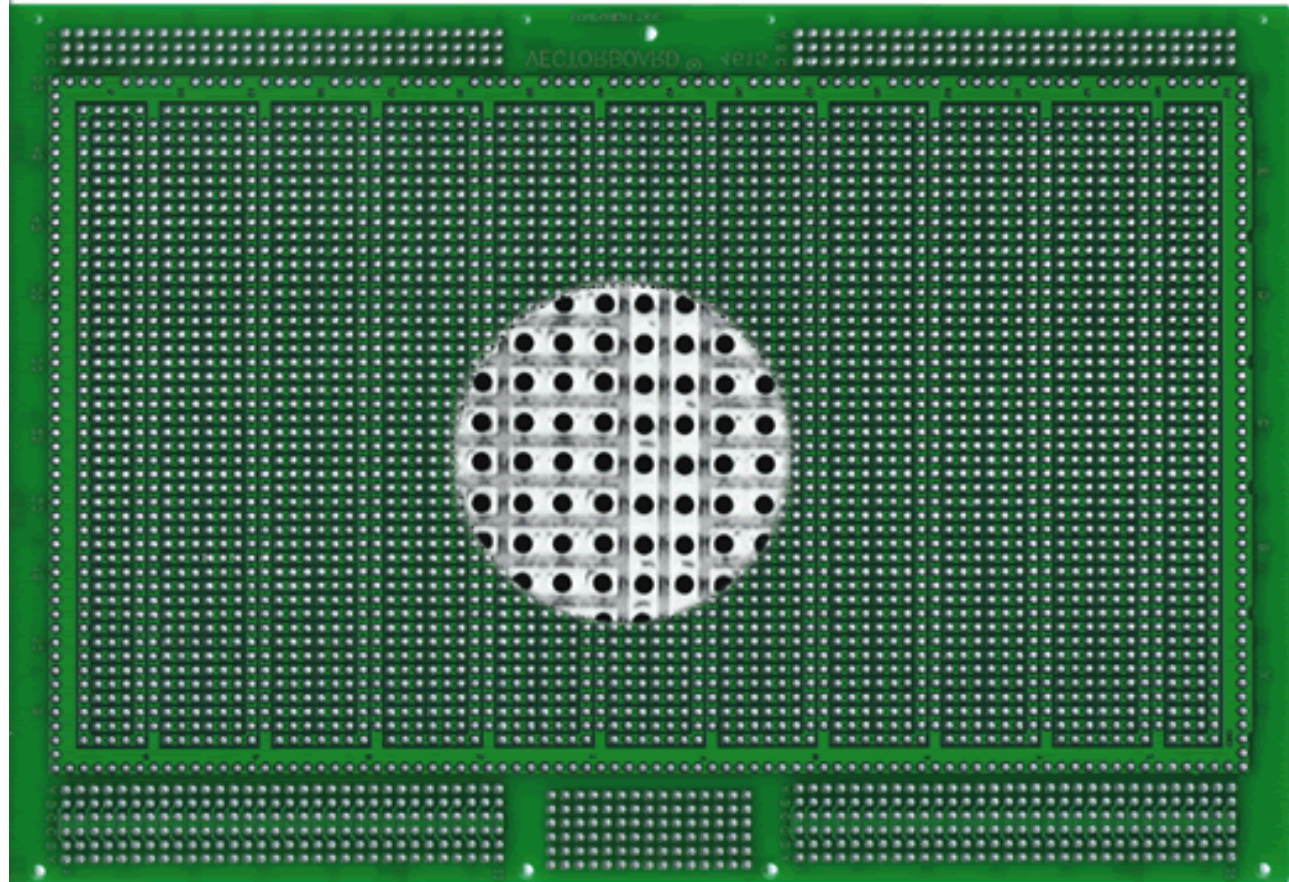


6U EUROCARD PLUGBOARD™ PART NO. : 4615



Description :

- 6U x 160mm, Hole Dia.: 0.042", Grid: 0.100" x 0.100"
- 3-Hole Solder Pad
- 3-Hole Solder Pads (0.28" x 0.080") for interconnecting multiple component leads
- Interleaved buses on both sides, back-to-back
- Pad and bus surfaces solder-coated for user convenience
- Plated-thru holes
- Row and column legends provided
- Layout paper and instructions included..... [Layout Paper\(PDF\)](#)

Circuit Pattern :	3-Hole Solder Pad
16 Pin DIP Capacity :	50
Hole Diameter :	0.042" { 1.0668 mm }
Grid :	0.100" x 0.100" { 2.54mm X 2.54mm }
Dimension { H, W, T } :	9.19" x 6.30" x 0.062" -----> { 6U x 160mm }
Material :	FR4 Epoxy Glass { MIL - P13949 type Gf }
Wire-Wrap Terminals :	T44, T46, T49 & T68
96 Pin DIN Connector :	RE96MWR { Available Separately }
Wire-Wrap Socket Pins :	R32
Recommended Card Cage:	CCK160-6U Series Card Cage { Subracks }
NEMA Grade :	FR4
UL Flammability Class :	94V - 0