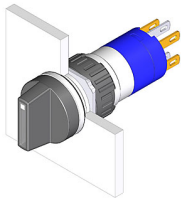


# EAO – Your Expert Partner for Human Machine Interfaces

## 52-271.022 - Selector switch 2 positions

### 52-271.022 - Selector switch 2 positions



*Attention: The preview is based on a sample product. This can differ from your current configuration.*

#### Mounting

Mounting cut-out Ø 16 mm  
Design raised

#### Front

Front dimension Ø 18 mm  
Front shape round

#### Other Attributes

Weight 0.006 kg  
Diode 1N4007 no value

#### Operating-/Indication part

Switching angle C = 90°

#### IP-Rating

Front protection IP 65

#### Connection Method

Terminal Solder 2.8 x 0.5 mm

#### Actuator

Switching action Rest - Maintained

#### Switching element

Rotary positions 2  
Switching system Snap-action switching element  
Contacts 1 NC + 1 NO  
Switching current 5 A  
Contact material Gold  
Switching voltage 250 V AC

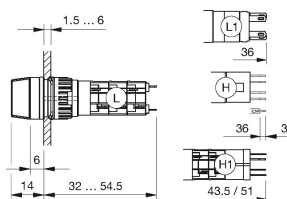
#### Function

Selector switch

# EAO – Your Expert Partner for Human Machine Interfaces

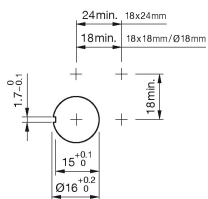
52-271.022 - Selector switch 2 positions

## Dimensions

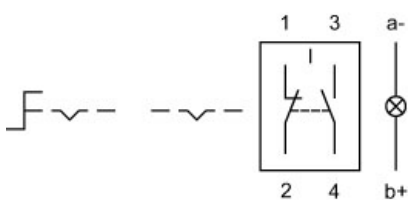


H = Universal terminal 2.0 x 0.5 mm

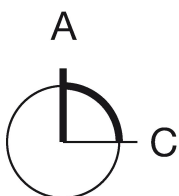
## Mounting cut-outs



## Wiring diagram



## Switching positions



## Additional information

illuminative

## Legend

Contacts: NC = Normally closed, NO = Normally open  
Switching action: A = Rest, C = Maintained