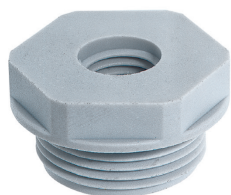


**SKINDICHT® KU/KUS**

Polyamide reducers for PG SKINTOP® cable glands

SKINTOP® KU

SKINTOP® KUS



SKINDICHT® KU/KUS reducers allow the use of cable glands with smaller connection threads than the existing thread hole.

**Technical data**

**Material:** glass fiber reinforced polyamide

**Temperature range:** -40°C to +100°C

**Color:** light gray (RAL 7035)

**Approvals****SKINTOP® KU**

Part number	Size		Pack size
	male	→ female	
51730010	PG 11	→ PG 7	50
52025100	PG 13	→ PG 7	50
52025110	PG 16	→ PG 9	50
52025120	PG 21	→ PG 11	25
51730040	PG 21	→ PG 13	25
52025130	PG 29	→ PG 13	25
51730050	PG 29	→ PG 16	25
52025140	PG 36	→ PG 16	25
52025150	PG 36	→ PG 21	25
52025050	PG 36	→ PG 29	25
52025160	PG 42	→ PG 21	25
52025170	PG 42	→ PG 29	25
52025060	PG 42	→ PG 36	25
52025180	PG 48	→ PG 29	25
52025190	PG 48	→ PG 36	25
52025070	PG 48	→ PG 42	25

**SKINTOP® KUS**

Part number	Size		Pack size
	male	→ female	
52025040	PG 9	→ PG 7	50
51730060	PG 11	→ PG 9	50
51730070	PG 13	→ PG 11	50
51730080	PG 16	→ PG 13	50

**SKINDICHT® ME/ME-M**

Nickel-plated brass enlargers for PG &amp; metric SKINTOP® cable glands



SKINDICHT® ME/ME-M enlargers allow the use of cable glands with larger connection threads than the existing thread hole.

**Technical data**

**Material:** nickel-plated brass  
- O-ring (metric only): NBR

**Temperature range:** -60°C to +200°C

**Approvals****PG**

Part number	Size		Pack size
	male	→ female	
52003990	PG 7	→ PG 9	100
52004000	PG 9	→ PG 11	100
52004010	PG 9	→ PG 13	100
52004020	PG 11	→ PG 13	100
52004030	PG 11	→ PG 16	100
52004040	PG 11	→ PG 21	100
52004050	PG 13	→ PG 16	100
52004060	PG 13	→ PG 21	50
52004070	PG 16	→ PG 21	50
52004080	PG 16	→ PG 29	50
52004090	PG 21	→ PG 29	50
52004100	PG 29	→ PG 36	50
52004110	PG 36	→ PG 42	10
52004120	PG 42	→ PG 48	10

**metric**

Part number	Size*		Pack size
	male	→ female	
52104450	M12	→ M16	100
52104452	M16	→ M20	100
52104454	M20	→ M25	100
52104456	M25	→ M32	50
52104458	M32	→ M40	50
52104460	M40	→ M50	25
52104462	M50	→ M63	25

\* Thread pitch is 1.5 mm