



ESSENTRA

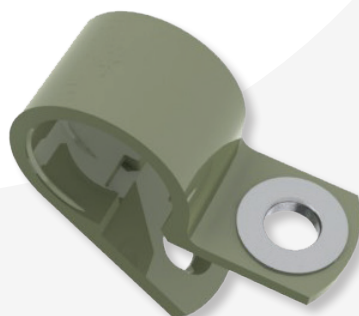
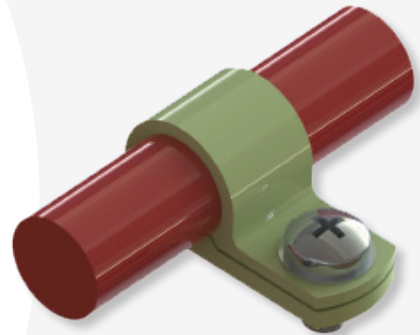
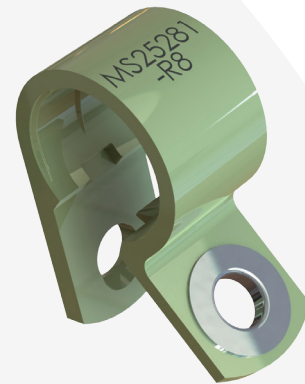
Questions? 800.621.1892

NM - MS25281 CABLE CLAMPS

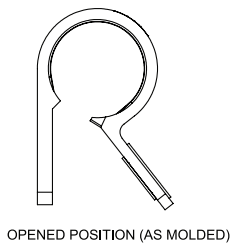
Designed for heavy duty cable management.

Features:

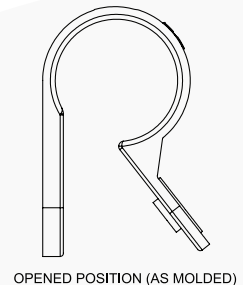
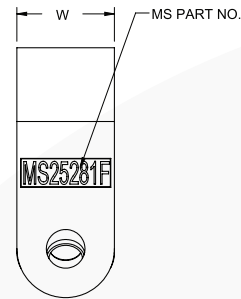
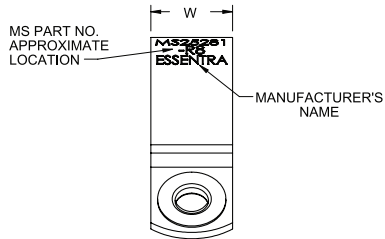
- Approved and listed on QPL-23190
- Qualified to SAE AS25281, AS23190
- Aluminum eyelet in the mounting hole distributes the load of the fastener
- Designed to provide stability where vibration is an issue.
- Available in 27 sizes for bundle diameters ranging from 3/16" - 1 3/4"
- Cage Code: 5EM82



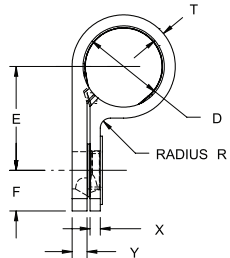
SAE
AS23190
AS25281
qualifications



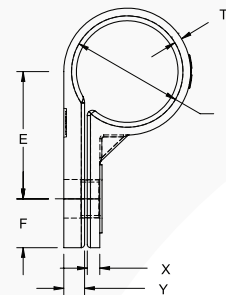
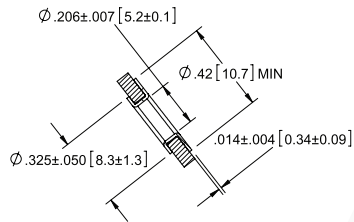
OPENED POSITION (AS MOLDED)



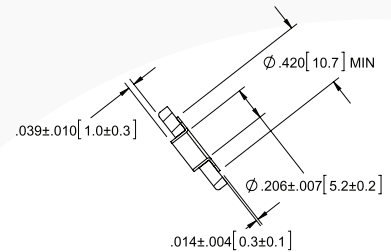
OPENED POSITION (AS MOLDED)



CLOSED POSITION (INSTALLED)



CLOSED POSITION F SERIES (INSTALLED)



Material: UL94 V2 Heat Stabilized Nylon, Conforms to MIL-M-20693/ASTM D-4066,
Eyelet: Aluminum, Anodized in accordance with MIL-A-8625

Part No.	MS Part No.	Cable Bundle Dia. "D"	Rec. Mounting Screw	"E"	"F"	"P"	"R"	"T"	"W"	"X"	"Y"	Standard Pack	Fig.
NM-3-R3	MS25281-R3	3/16 (4.8)	#10 or M5	.485 (12.3)	.250 (6.4)	.250 (6.4)	.062 (1.57)	.057 (1.4)	.503 (12.8)	.065 (1.7)	.080 (2)	500	1
NM-4-R4	MS25281-R4	1/4 (6.4)		.510 (13)									
NM-5-R5	MS25281-R5	5/16 (7.9)		.546 (13.9)									
NM-6-R6	MS25281-R6	3/8 (9.5)		.578 (14.7)									
NM-7-R7	MS25281-R7	7/16 (11.1)		.608 (15.4)									
NM-8-R8	MS25281-R8	1/2 (12.7)		.639 (16.2)									
NM-9-R9	MS25281-R9	9/16 (14.3)		.661 (16.8)									
NM-10-R10	MS25281-R10	5/8 (15.9)		.706 (17.9)									
NM-11-R11	MS25281-R11	11/16 (17.5)		.785 (19.9)									
NM-12-R12	MS25281-R12	3/4 (19.1)		.816 (20.7)									
NM-13-R13	MS25281-R13	13/16 (20.6)		.827 (21)									
NM-14-R14	MS25281-R14	7/8 (22.2)		.878 (22.3)									
NM-16-R16	MS25281-R16	1 (25.4)		.941 (23.9)									
NM-18-R18	MS25281-R18	1-1/8 (28.6)		.983 (25)									
NM-20-R20	MS25281-R20	1-1/4 (31.75)		1.066 (27.1)									
NM-22-R22	MS25281-R22	1-3/8 (34.9)		1.110 (28.2)									
NM-24-R24	MS25281-R24	1-1/2 (38.1)		1.170 (29.7)									
NM-26-R26	MS25281-R26	1-5/8 (41.3)		1.250 (31.75)									
NM-28-R28	MS25281-R28	1-3/4 (44.5)		1.300 (33)									
NM-3-F3	MS25281-F3	3/16 (4.8)		N/A	.498 (12.6)	.250 (6.4)	.250 (6.4)	N/A	.040 (1)	.500 (12.7)	.065 (1.65)	.065 (1.65)	
NM-4-F4	MS25281-F4	1/4 (6.4)	.529 (13.4)										
NM-5-F5	MS25281-F5	5/16 (7.9)	.560 (14.2)										
NM-6-F6	MS25281-F6	3/8 (9.5)	.592 (15)										
NM-7-F7	MS25281-F7	7/16 (11.1)	.623 (15.8)										
NM-8-F8	MS25281-F8	1/2 (12.7)	.654 (16.6)										
NM-10-F10	MS25281-F10	5/8 (15.9)	.783 (19.9)										
NM-13-F13	MS25281-F13	13/16 (20.6)	.877 (22.3)										