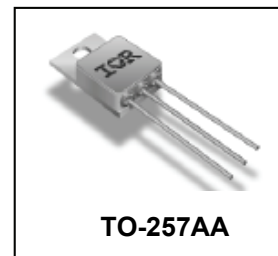


## POWER MOSFET THRU-HOLE (TO-257AA)

## 100V, P-CHANNEL HEXFET MOSFET TECHNOLOGY

### Product Summary

| Part Number | RDS(on) | I <sub>D</sub> | Eyelets |
|-------------|---------|----------------|---------|
| IRFY9140C   | 0.20Ω   | -15.8A         | Ceramic |
| IRFY9140CM  | 0.20Ω   | -15.8A         | Ceramic |



### Description

HEXFET MOSFET technology is the key to IR HiRel advanced line of power MOSFET transistors. The efficient geometry design achieves very low on-state resistance combined with high trans conductance. HEXFET transistors also feature all of the well-established advantages of MOSFETs, such as voltage control, very fast switching, ease of paralleling and electrical parameter temperature stability. They are well-suited for applications such as switching power supplies, motor controls, inverters, choppers, audio amplifiers, high energy pulse circuits, and virtually any application where high reliability is required. The HEXFET transistor's totally isolated package eliminates the need for additional isolating material between the device and the heat sink. This improves thermal efficiency and reduces drain capacitance.

### Features

- Simple Drive Requirements
- Ease of Paralleling
- Hermetically Sealed
- Electrically Isolated
- Ceramic Eyelets
- Ideally Suited For Space Level Applications
- ESD Rating: Class 2 per MIL-STD-750, Method 1020

### Absolute Maximum Ratings

|   | Parameter   |  | Units |
|---|---|--|-------|
| I <sub>D</sub> @ V <sub>GS</sub> = -10V, T <sub>C</sub> = 25°C  | Continuous Drain Current                            | -15.8                                    | A     |
| I <sub>D</sub> @ V <sub>GS</sub> = -10V, T <sub>C</sub> = 100°C | Continuous Drain Current                            | -10                                      |       |
| I <sub>DM</sub>   | Pulsed Drain Current ①                              | -60                                      |       |
| P <sub>D</sub> @ T <sub>C</sub> = 25°C                          | Maximum Power Dissipation                           | 100                                      | W     |
|   | Linear Derating Factor                              | 0.8                                      | W/°C  |
| V <sub>GS</sub>   | Gate-to-Source Voltage                              | ± 20                                     | V     |
| E <sub>AS</sub>   | Single Pulse Avalanche Energy ②                     | 640                                      | mJ    |
| I <sub>AR</sub>   | Avalanche Current ①                                 | -15.8                                    | A     |
| E <sub>AR</sub>   | Repetitive Avalanche Energy ①                       | 10                                       | mJ    |
| dv/dt   | Peak Diode Recovery dv/dt ③                         | -5.5                                     | V/ns  |
| T <sub>J</sub><br>T <sub>STG</sub>                              | Operating Junction and<br>Storage Temperature Range | -55 to + 150                             | °C    |
|   | Lead Temperature                                    | 300 (0.063 in/1.6mm from case for 10sec) |       |
|   | Weight  | 4.3 (Typical)                            | g     |

For Footnotes refer to the page 2.

**Electrical Characteristics @ T<sub>J</sub> = 25°C (Unless Otherwise Specified)**

|                                     | Parameter                                  | Min. | Typ. | Max. | Units | Test Conditions   |
|-------------------------------------|--|------|------|------|-------|---|
| BV <sub>DSS</sub>                   | Drain-to-Source Breakdown Voltage          | -100 | —    | —    | V     | V <sub>GS</sub> = 0V, I <sub>D</sub> = -1.0mA   |
| ΔBV <sub>DSS</sub> /ΔT <sub>J</sub> | Breakdown Voltage Temp. Coefficient        | —    | -0.1 | —    | V/°C  | Reference to 25°C, I <sub>D</sub> = -1.0mA  |
| R <sub>DS(on)</sub>                 | Static Drain-to-Source On-State Resistance | —    | —    | 0.20 | Ω     | V <sub>GS</sub> = -10V, I <sub>D</sub> = -10A ④   |
| V <sub>GS(th)</sub>                 | Gate Threshold Voltage                     | -2.0 | —    | -4.0 | V     | V <sub>DS</sub> = V <sub>GS</sub> , I <sub>D</sub> = -250μA   |
| G <sub>fs</sub>                     | Forward Transconductance                   | 6.2  | —    | —    | S     | V <sub>DS</sub> = -15V, I <sub>D</sub> = -10A ④   |
| I <sub>DSS</sub>                    | Zero Gate Voltage Drain Current            | —    | —    | -25  | μA    | V <sub>DS</sub> = -80V, V <sub>GS</sub> = 0V  |
|                                     |  | —    | —    | -250 |       | V <sub>DS</sub> = -80V, V <sub>GS</sub> = 0V, T <sub>J</sub> = 125°C  |
| I <sub>GSS</sub>                    | Gate-to-Source Leakage Forward             | —    | —    | -100 | nA    | V <sub>GS</sub> = -20V  |
|                                     | Gate-to-Source Leakage Reverse             | —    | —    | 100  |       | V <sub>GS</sub> = 20V   |
| Q <sub>G</sub>                      | Total Gate Charge                          | —    | —    | 60   | nC    | I <sub>D</sub> = -15.8A   |
| Q <sub>GS</sub>                     | Gate-to-Source Charge                      | —    | —    | 13   |       | V <sub>DS</sub> = -50V  |
| Q <sub>GD</sub>                     | Gate-to-Drain ('Miller') Charge            | —    | —    | 35.2 |       | V <sub>GS</sub> = -10V  |
| t <sub>d(on)</sub>                  | Turn-On Delay Time                         | —    | —    | 35   | ns    | V <sub>DD</sub> = -50V  |
| t <sub>r</sub>                      | Rise Time                                  | —    | —    | 85   |       | I <sub>D</sub> = -15.8A   |
| t <sub>d(off)</sub>                 | Turn-Off Delay Time                        | —    | —    | 85   |       | R <sub>G</sub> = 7.5Ω   |
| t <sub>f</sub>                      | Fall Time                                  | —    | —    | 65   |       | V <sub>GS</sub> = -10V  |
| L <sub>S</sub> + L <sub>D</sub>     | Total Inductance                           | —    | 6.8  | —    | nH    | Measured from Drain lead (6mm / 0.25 in from package) to Source lead (6mm / 0.25 in from package) with Source wire internally bonded from Source pin to Drain pad |
| C <sub>iss</sub>                    | Input Capacitance                          | —    | 1400 | —    | pF    | V <sub>GS</sub> = 0V  |
| C <sub>oss</sub>                    | Output Capacitance                         | —    | 600  | —    |       | V <sub>DS</sub> = -25V  |
| C <sub>rss</sub>                    | Reverse Transfer Capacitance               | —    | 200  | —    |       | f = 1.0MHz  |

**Source-Drain Diode Ratings and Characteristics**

|                 | Parameter                              | Min.   | Typ. | Max.  | Units | Test Conditions  |
|-----------------|--|--|------|-------|-------|--|
| I <sub>S</sub>  | Continuous Source Current (Body Diode) | —  | —    | -15.8 | A     |  |
| I <sub>SM</sub> | Pulsed Source Current (Body Diode) ①   | —  | —    | -60   |       |  |
| V <sub>SD</sub> | Diode Forward Voltage                  | —  | —    | -5.0  | V     | T <sub>J</sub> = 25°C, I <sub>S</sub> = -15.8A, V <sub>GS</sub> = 0V ④ |
| t <sub>rr</sub> | Reverse Recovery Time                  | —  | —    | 280   | ns    | T <sub>J</sub> = 25°C, I <sub>F</sub> = -15.8A, V <sub>DD</sub> ≤ -50V |
| Q <sub>rr</sub> | Reverse Recovery Charge                | —  | —    | 3.6   | μC    | di/dt = -100A/μs ④   |
| t <sub>on</sub> | Forward Turn-On Time                   | Intrinsic turn-on time is negligible (turn-on is dominated by L <sub>S</sub> +L <sub>D</sub> ) |      |       |       |  |

**Thermal Resistance**

|                  | Parameter           | Min. | Typ. | Max. | Units | Test Conditions      |
|------------------|---------------------|------|------|------|-------|----------------------|
| R <sub>θJC</sub> | Junction-to-Case    | —    | —    | 1.25 | °C/W  | Typical socket mount |
| R <sub>θCS</sub> | Case-to-sink        | —    | 0.21 | —    |       |                      |
| R <sub>θJA</sub> | Junction-to-Ambient | —    | —    | 80   |       |                      |

**Footnotes:**

- ① Repetitive Rating; Pulse width limited by maximum junction temperature.
- ② V<sub>DD</sub> = -50V, starting T<sub>J</sub> = 25°C, L = 5.1mH, Peak I<sub>L</sub> = -15.8A, V<sub>GS</sub> = -10V
- ③ I<sub>SD</sub> ≤ -15.8A, di/dt ≤ -200A/μs, V<sub>DD</sub> ≤ -100V, T<sub>J</sub> ≤ 150°C
- ④ Pulse width ≤ 300 μs; Duty Cycle ≤ 2%

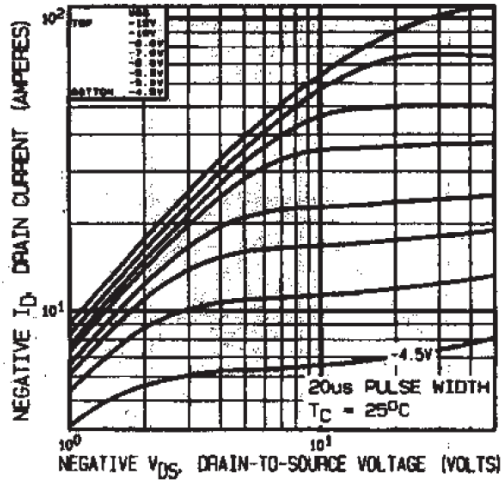


Fig 1. Typical Output Characteristics

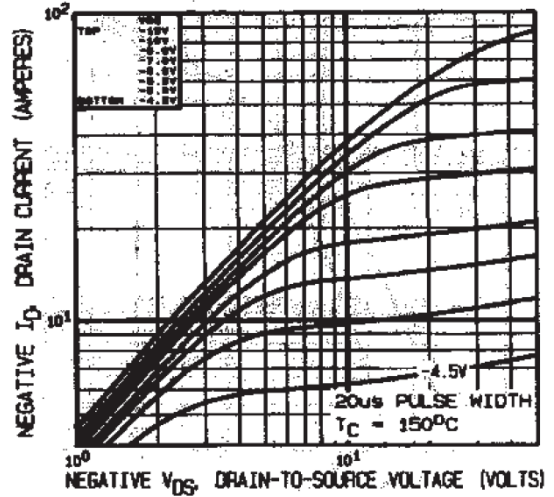


Fig 2. Typical Output Characteristics

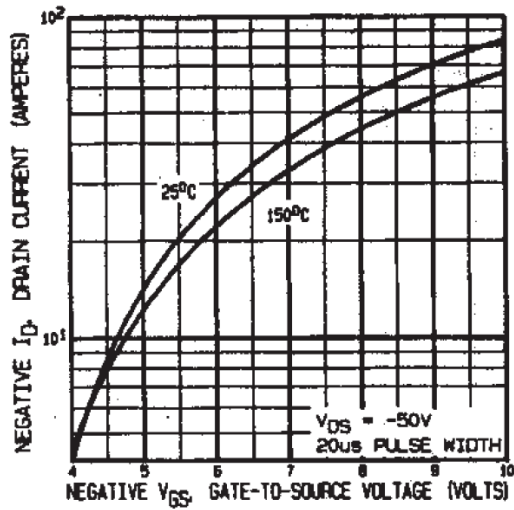


Fig 3. Typical Transfer Characteristics

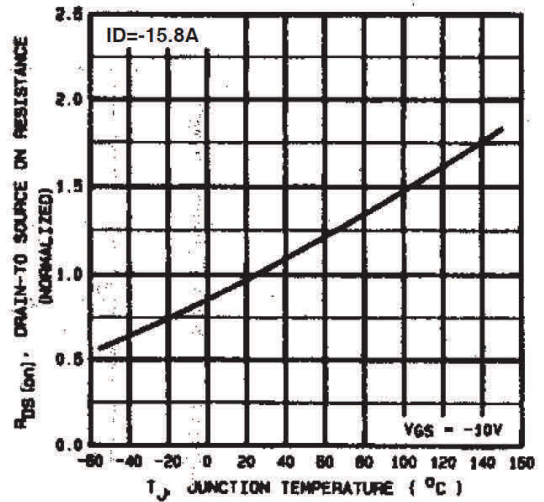


Fig 4. Normalized On-Resistance Vs. Temperature

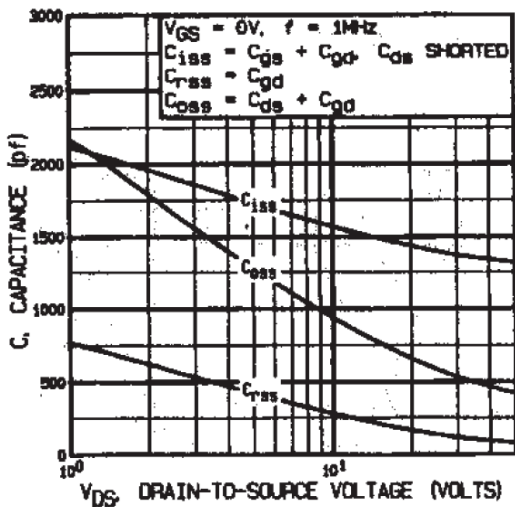


Fig 5. Typical Capacitance Vs. Drain-to-Source Voltage

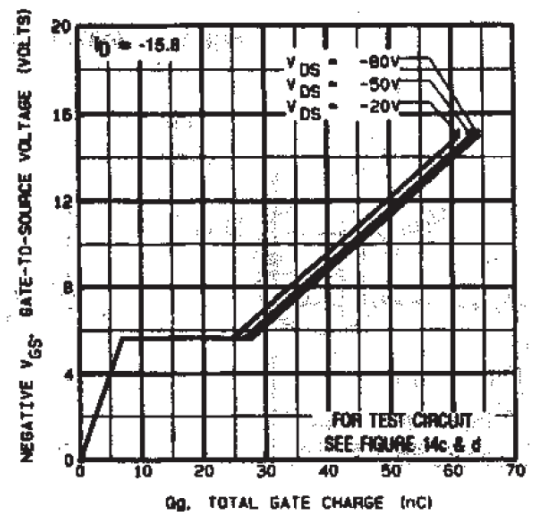
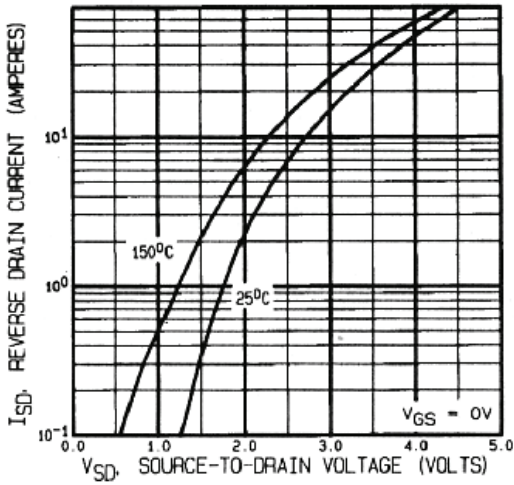
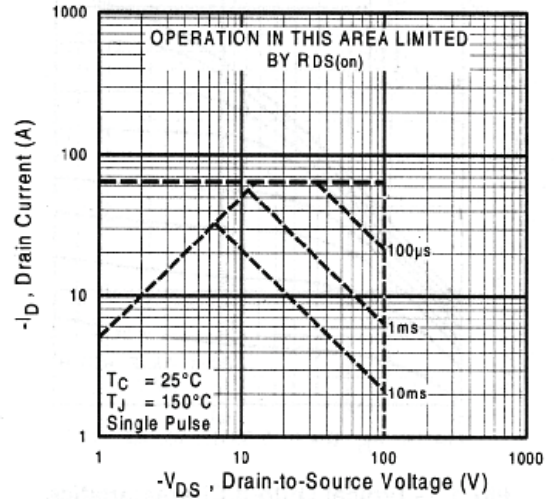


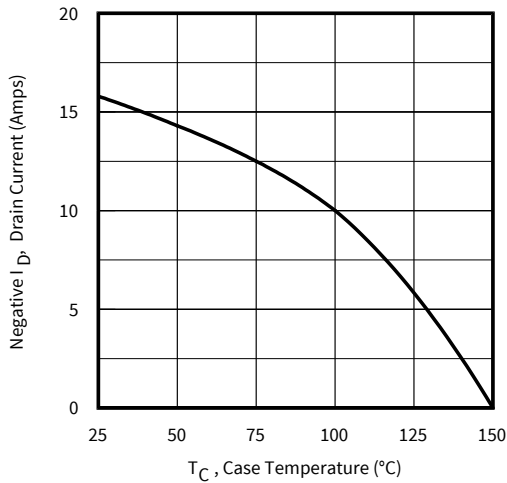
Fig 6. Typical Gate Charge Vs. Gate-to-Source Voltage



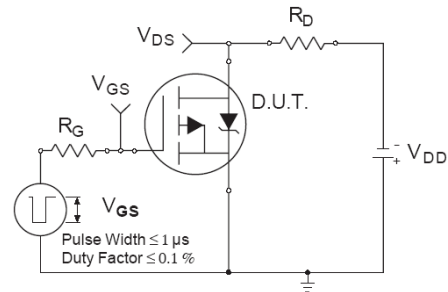
**Fig 7.** Typical Source-Drain Diode Forward Voltage



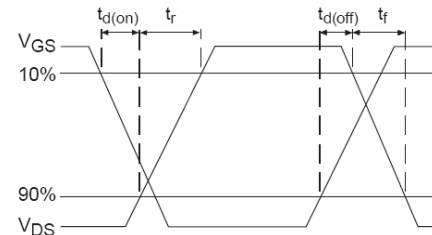
**Fig 8.** Maximum Safe Operating Area



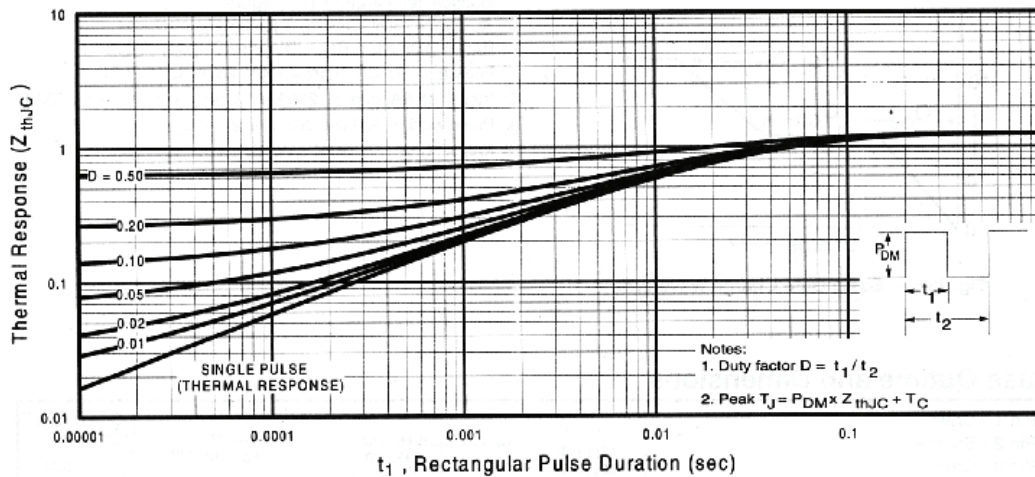
**Fig 9.** Maximum Drain Current Vs. Case Temperature



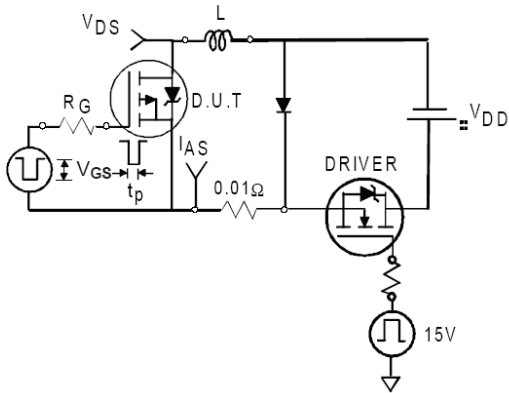
**Fig 10a.** Switching Time Test Circuit



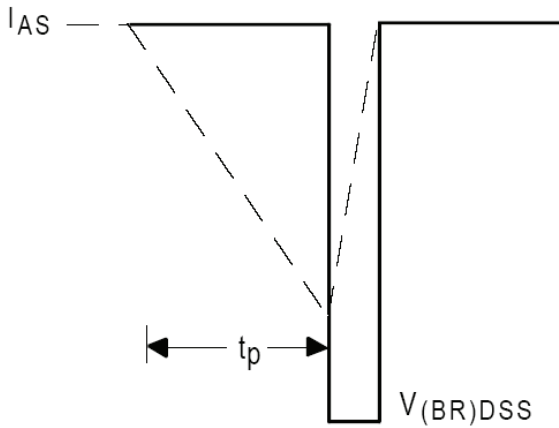
**Fig 10b.** Switching Time Waveforms



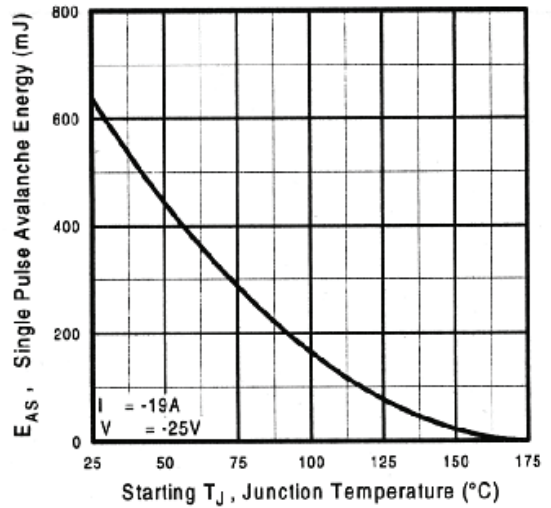
**Fig 11.** Maximum Effective Transient Thermal Impedance, Junction-to-Case



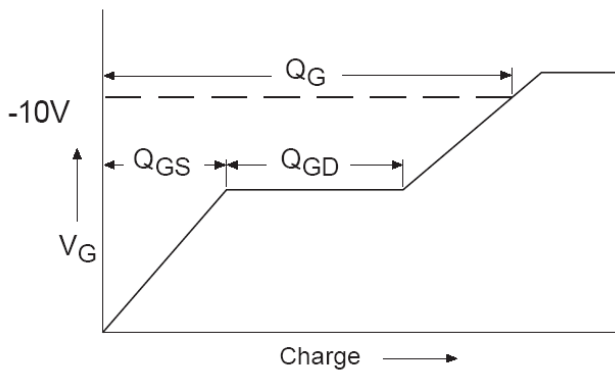
**Fig 12a.** Unclamped Inductive Test Circuit



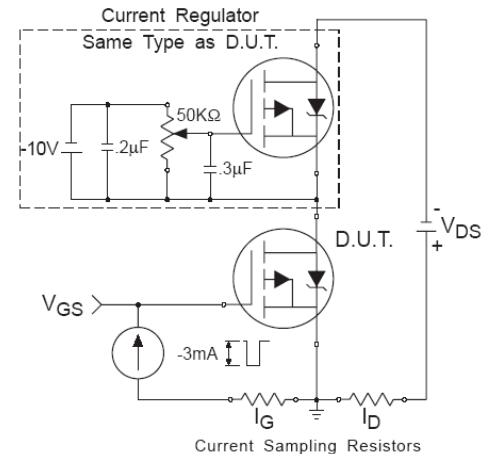
**Fig 12b.** Unclamped Inductive Waveforms



**Fig 12c.** Maximum Avalanche Energy Vs. Drain Current

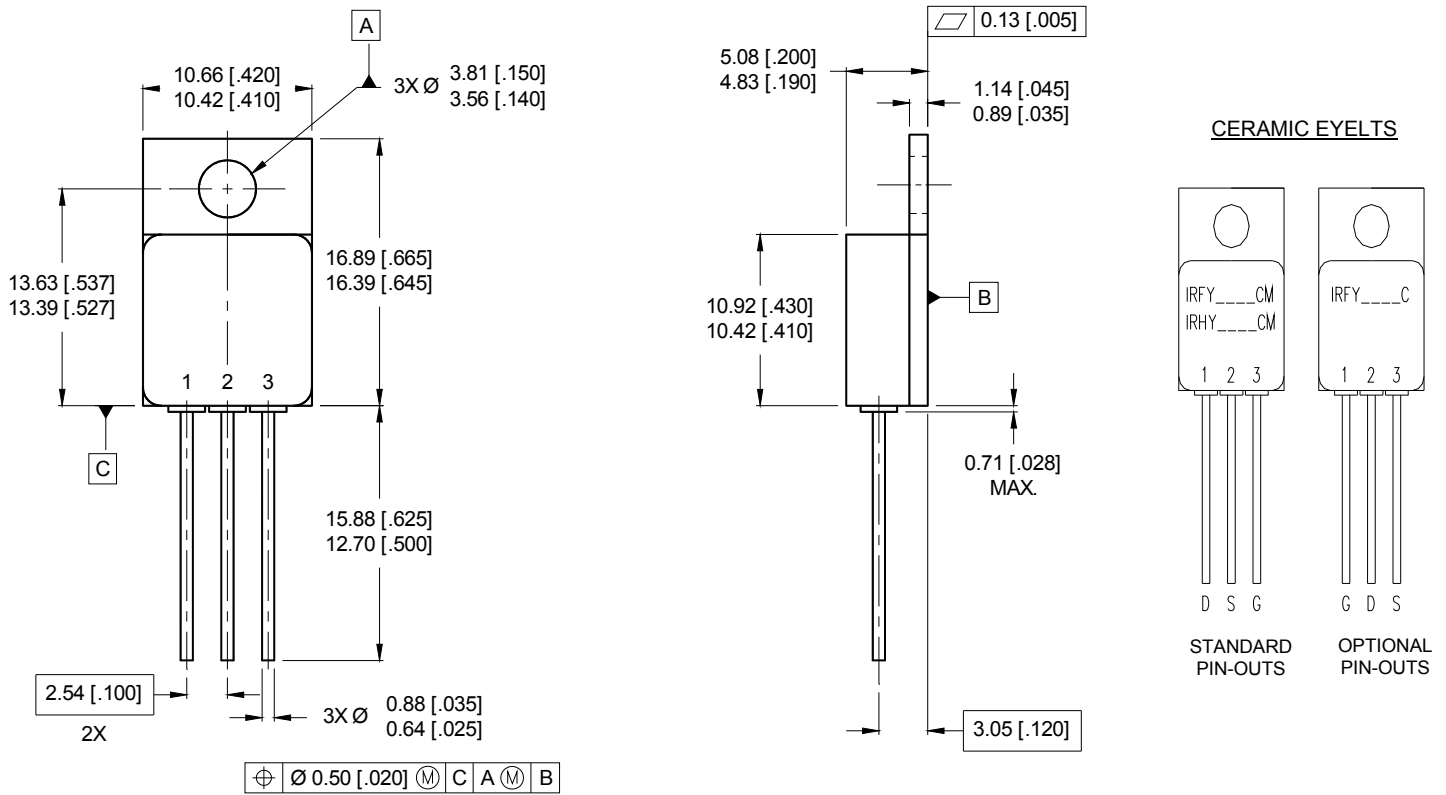


**Fig 13a.** Basic Gate Charge Waveform



**Fig 13b.** Gate Charge Test Circuit

**Case Outline and Dimensions – TO-257AA**



**NOTES:**

1. DIMENSIONING & TOLERANCING PER ANSI Y14.5M-1994.
2. CONTROLLING DIMENSION: INCH.
3. DIMENSIONS ARE SHOWN IN MILLIMETERS [INCHES].
4. OUTLINE CONFORMS TO JEDEC OUTLINE TO-257AA.

**LEAD ASSIGNMENT**

- 1 = DRAIN
- 2 = SOURCE
- 3 = GATE

### **IMPORTANT NOTICE**

The information given in this document shall be in no event regarded as guarantee of conditions or characteristic. The data contained herein is a characterization of the component based on internal standards and is intended to demonstrate and provide guidance for typical part performance. It will require further evaluation, qualification and analysis to determine suitability in the application environment to confirm compliance to your system requirements.

With respect to any example hints or any typical values stated herein and/or any information regarding the application of the product, Infineon Technologies hereby disclaims any and all warranties and liabilities of any kind including without limitation warranties on non- infringement of intellectual property rights and any third party.

In addition, any information given in this document is subject to customer's compliance with its obligations stated in this document and any applicable legal requirements, norms and standards concerning customer's product and any use of the product of Infineon Technologies in customer's applications.

The data contained in this document is exclusively intended for technically trained staff. It is the responsibility of any customer's technical departments to evaluate the suitability of the product for the intended applications and the completeness of the product information given in this document with respect to applications.

For further information on the product, technology, delivery terms and conditions and prices, please contact your local sales representative or go to ([www.infineon.com/hirel](http://www.infineon.com/hirel)).

### **WARNING**

Due to technical requirements products may contain dangerous substances. For information on the types in question, please contact your nearest Infineon Technologies office.