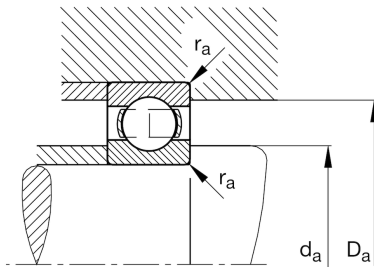
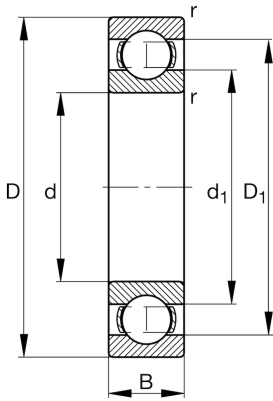
**FAG****618/1400-M**

Deep groove ball bearing

Schaeffler ID:  
0190967470000Deep groove ball bearing 618..-M, single  
row, solid brass cage

## Technical information

**Main Dimensions & Performance Data**

d	1,400 mm	Bore diameter
D	1,700 mm	Outside diameter
B	132 mm	Width
$C_r$	1,050,000 N	Basic dynamic load rating, radial
$C_{0r}$	3,250,000 N	Basic static load rating, radial
$C_{ur}$	48,000 N	Fatigue load limit, radial
$n_G$	570 1/min	Limiting speed
$n_{gr}$	340 1/min	Reference speed
$\approx m$	640 kg	Weight

**Mounting dimensions**

$d_{a \min}$	1,428 mm	Minimum diameter shaft shoulder
$D_{a \max}$	1,672 mm	Maximum diameter of housing shoulder
$r_{a \max}$	6 mm	Maximum fillet radius

**Dimensions**

$r_{\min}$	7.5 mm	Minimum chamfer dimension
$D_1$	1,604.5 mm	Shoulder diameter outer ring
$d_1$	1,498.8 mm	Shoulder diameter inner ring

**Temperature range**

$T_{\min}$	-30 °C	Operating temperature min.
$T_{\max}$	200 °C	Operating temperature max.

**Calculation factors**

$f_0$	15.9	Calculation factor
-------	------	--------------------