

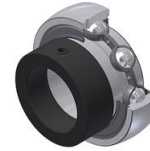


Brand of NTN corporation

## Technical data

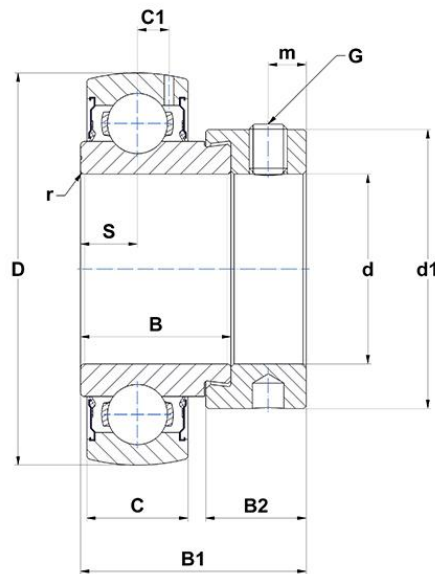
### ES205-14G2

Insert bearings



Spherical outer diameter, fixing by eccentric locking collar, single lip seal

#### VISUAL (S)



#### PRODUCT DEFINITION

|   |           |
|---|-----------|
| <b>Brand</b>  | SNR       |
| <b>B - Width of Inner Ring</b>  | 21,4 mm   |
| <b>B1 - Overall width Inner Ring</b>                                  | 30,9 mm   |
| <b>B2 - Width of eccentric locking collar/nut</b>                     | 13,5 mm   |
| <b>C - Width of Outer Ring</b>  | 15 mm     |
| <b>C1 - Distance center of OR to center of lubrication zone</b>       | 4,3 mm    |
| <b>d - Shaft diameter</b>   | 22,225 mm |
| <b>d1 - Outer dia of eccent. Lock. collar / nut of adapter sleeve</b> | 37,4 mm   |



**NTN Europe**

1 rue des Usines · BP 2017 · 74010 Annecy Cedex · France · Tel. +33 (0)4 50 65 30 00  
 S.A. au capital de 322 639 919 € · RCS ANNECY B 325 821 072 · Id. Fiscale : FR 48 325 821 072  
 SIRET 325 821 072 00015 · Code APE 2815 Z · Code NACE 28.15

### PRODUCT DEFINITION

|   |           |
|---|-----------|
| <b>D - Outer diameter of OR</b>               | 52 mm     |
| <b>G - Set screw size</b>                     | 1/4-28UNF |
| <b>m - Distance to set screw</b>              | 5 mm      |
| <b>r - Radius Inner Ring</b>                  | 0.6       |
| <b>S - Distance front side/bearing centre</b> | 7,5 mm    |
| <b>f0 - Factor</b>                            | 14        |
| <b>SW - Wrench size</b>                       | 3,175 mm  |

### PRODUCT PERFORMANCE

|                                   |             |
|-----------------------------------|-------------|
| <b>C - Dynamic load rating</b>    | 14000000 mN |
| <b>C0 - Static load rating</b>    | 7880000 mN  |
| <b>Operating temperature min.</b> | 253,15 °K   |
| <b>Operating temperature max.</b> | 373,15 °K   |

### OTHER FEATURES

|  |         |
|--|---------|
| <b>Mass</b>  | 0,19 kg |
| <b>Recommended tightening torque for set screw</b> | 3.7 N-m |

### BEARING FREQUENCIES

|  |                     |
|--|---------------------|
| <b>BPFO - Characteristic outer ring frequency (60 rpm)</b>     | 3.58178020565553 Hz |
| <b>BPMI - Characteristic inner ring frequency (60 rpm)</b>     | 5.41821979434447 Hz |
| <b>FTF - Characteristic cage frequency (60 rpm)</b>            | 0.39797557840617 Hz |
| <b>BSF - Characteristic rolling element frequency (60 rpm)</b> | 4.69673855838714 Hz |

