

Features

- Fast switching
- Automatic reset
- SMB package
- Suitable for industrial lighting environments
- RoHS compliant*

Applications

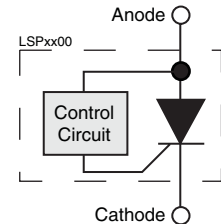
- LED streetlights
- LCD backlighting
- Display lighting
- Intrinsically safe lighting

LSP Series LED Shunt Protector

General Information

Bourns® LSP Series protectors are electronic shunts that provide a current bypass when an LED element in an LED string fails open circuit. This ensures the remaining string of LEDs will continue to function. There are many cases where high reliability of the LED lighting must be maintained, such as LCD backlighting, transport lighting, avionics, intrinsically safe and low maintenance lighting.

The LSP Series is available in surface mount package DO-214AA (SMB) size format.



Absolute Maximum Ratings (@ T_A = 25 °C Unless Otherwise Noted)

Rating	Symbol	Value	Unit
Repetitive peak off-state voltage	V _{DRM}	6 9 13 18	V
Average on-state current (Note 1)	I _T	350	mA
Operating junction temperature	T _J	-40 to +150	°C
Storage temperature	T _S	-65 to +150	°C
Lead temperature, soldering (10 s)		260	°C

Notes:

1. Using 75 mm x 75 mm 4-Layer PCB (EIA/JESD51-7), I_T = 1.0 A

Electrical Characteristics (@ T_A = 25 °C Unless Otherwise Noted)

Parameter	Test Conditions	Min.	Nom.	Max.	Unit
I _{DRM} Repetitive peak off-state current	V _D = V _{DRM}			10	µA
V _(BO) Breakover voltage	dv/dt = 750 V/ms, R _{SOURCE} = 300	6 9 13 18		16 18 26 33	V
I _H Holding current	I _T = 1 A, di/dt = 30 mA/ms	5	30		mA
I _{BO} Breakover current	di/dt = 0.8 A/ms			75	mA
V _T On-state voltage	I _T = 1 A			1.2	V

Thermal Characteristics (@ T_A = 25 °C Unless Otherwise Noted)

Parameter	Test Conditions	Min.	Nom.	Max.	Unit
Junction to free air thermal resistance	EIA/JESD51-3 PCB, I _T = 350 mA, T _A = 25 °C		170		°C/W
Junction to free air thermal resistance	EIA/JESD51-7, 75 mm x 75 mm 4-Layer PCB, I _T = 1.0 A, T _A = 25 °C		90		°C/W

JANUARY 2011

*RoHS Directive 2002/95/EC Jan 27, 2003 including Annex.

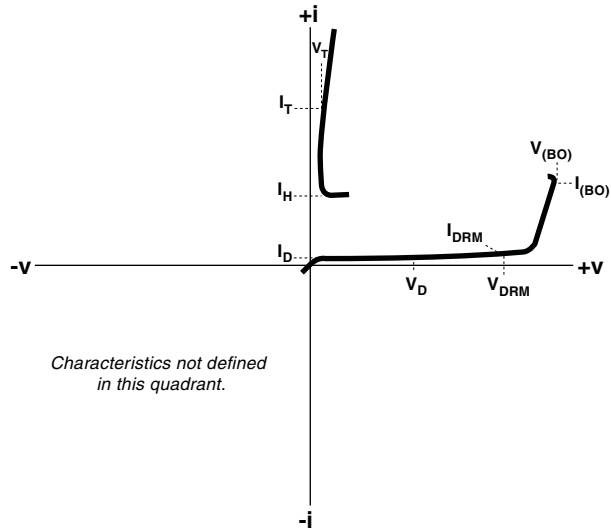
Specifications are subject to change without notice.

Customers should verify actual device performance in their specific applications.

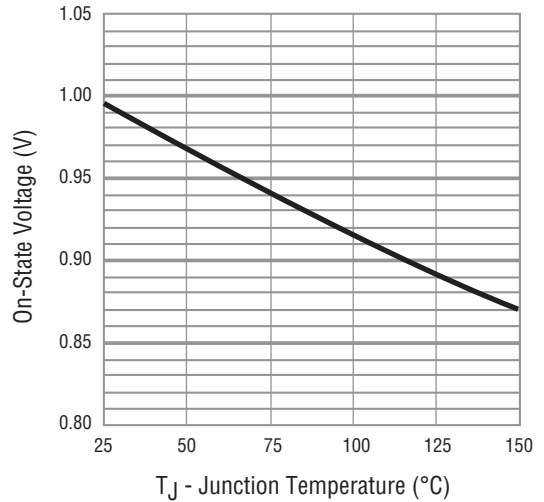
LSP Series LED Shunt Protector

BOURNS®

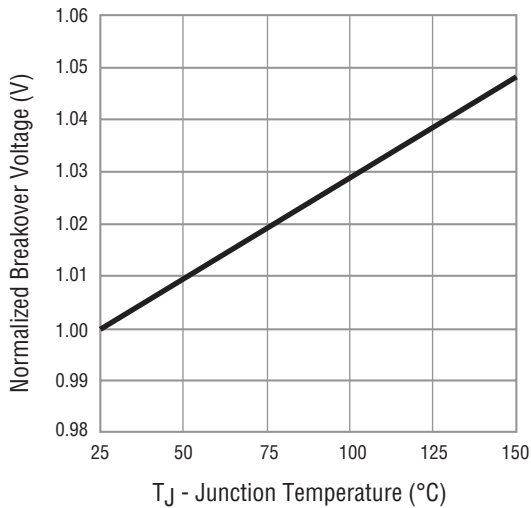
V-I Characteristic



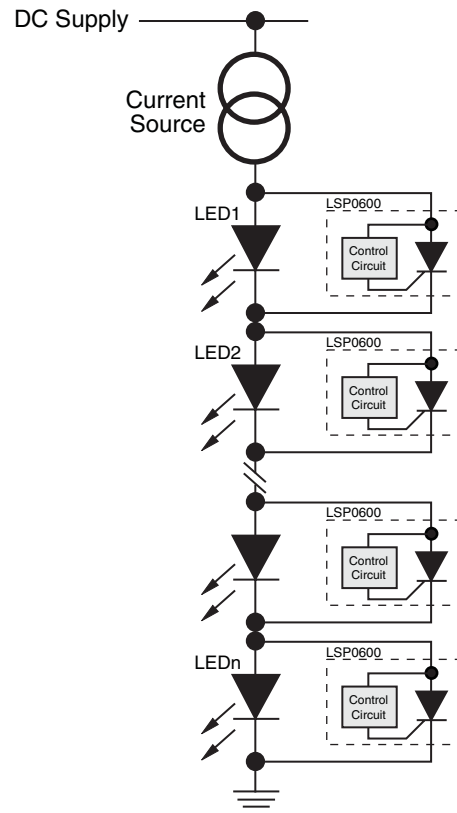
On-state Voltage vs. Junction Temperature



Normalized Breakover Voltage vs. Junction Temperature



Typical Application

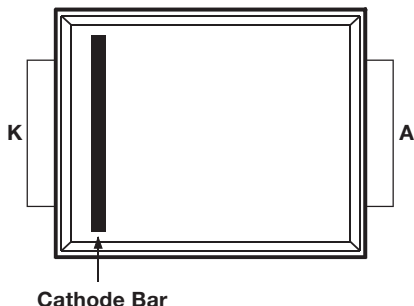


JANUARY 2011
 Specifications are subject to change without notice.
 Customers should verify actual device performance in their specific applications.

LSP Series LED Shunt Protector

BOURNS®

Product Specifications



Unit Epoxy molded SMB D0-214AA package
 Mold Material.....UL94V-0
 Terminations100 % matte tin-plated over copper alloy
 Unit Weight..... 102 mg.

Packaging Specifications

Standard..... EIA-481-1
 Tape Width 12 mm (.472 in.)
 Reel Diameter.....330 mm (12.99 in.)
 Part Alignment.....Cathode bar adjacent to sprocket hole
 Quantity per Reel..... 3,000 pieces

Typical Part Marking

	Top Side Marking
LSP0600BJR-S	LSP060
LSP0900BJR-S	LSP090
LSP1300BJR-S	LSP130
LSP1800BJR-S	LSP180

How to Order

	LSP 0600 BJ R - S
Model Series	_____
LED Shunt Protector	_____
Off-State Voltage	_____
0600 = 6 V	_____
0900 = 9 V	_____
1300 = 13 V	_____
1800 = 18 V	_____
Package	_____
BJ = SMB DO-214AA Package	_____
Standard Packaging	_____
R = Tape and Reel Packaging (3,000 pcs./reel)	_____
Termination	_____
S = Pb Free Termination (RoHS Compliant)	_____

BOURNS®

Asia-Pacific: Tel: +886-2 2562-4117 • Fax: +886-2 2562-4116

Europe: Tel: +41-41 768 5555 • Fax: +41-41 768 5510

The Americas: Tel: +1-951 781-5500 • Fax: +1-951 781-5700

www.bourns.com

JANUARY 2011

Specifications are subject to change without notice.
 Customers should verify actual device performance in their specific applications.

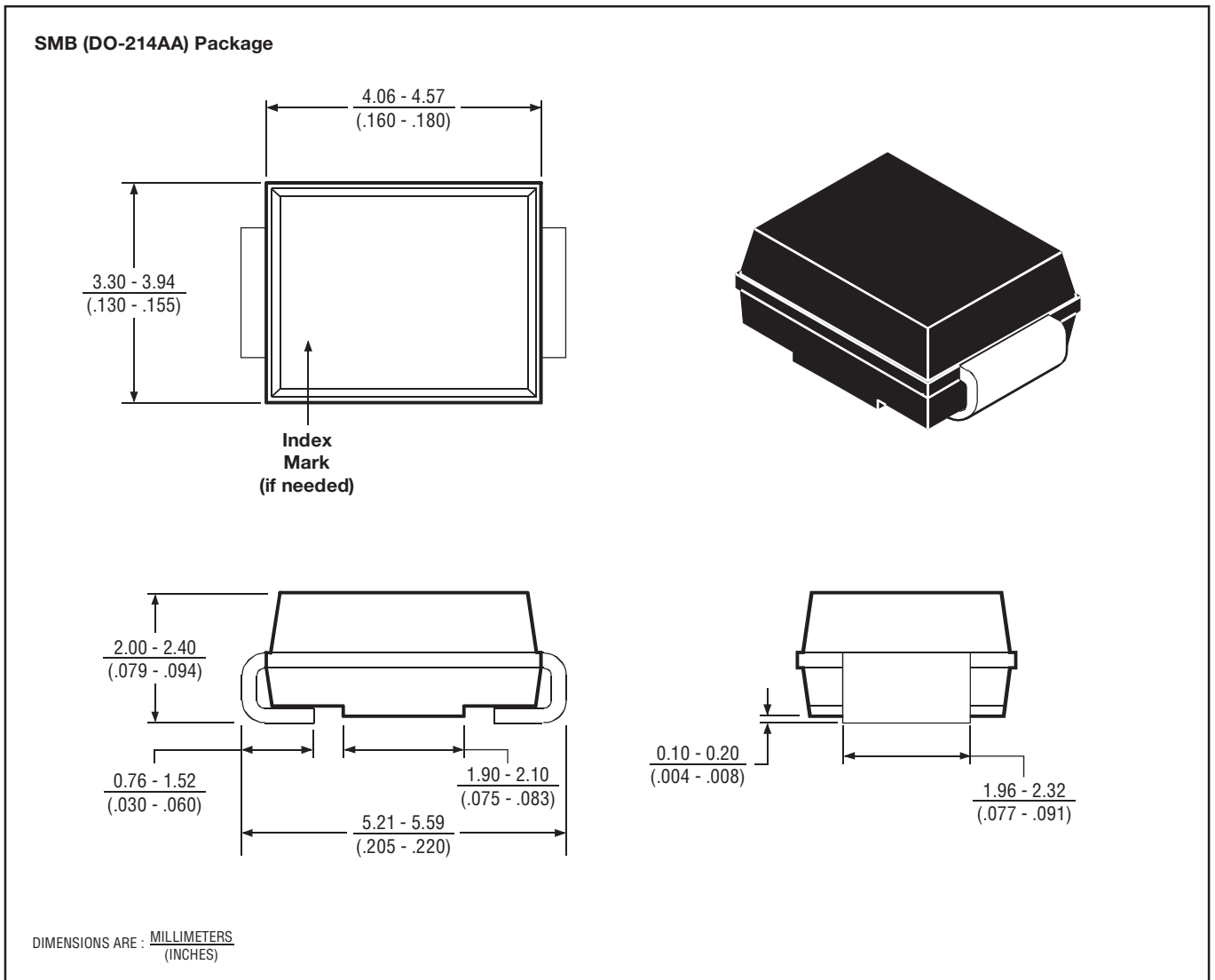


BOURNS®

SMB (DO-214AA)

Package Outline Dimensions

This surface mount two terminal package consists of a circuit mounted on a lead frame and encapsulated within a plastic compound. The compound is designed to withstand normal soldering temperatures with no deformation and circuit performance characteristics will remain stable when operated in most high humidity conditions. Terminals require no additional cleaning or processing when used in soldered assembly.

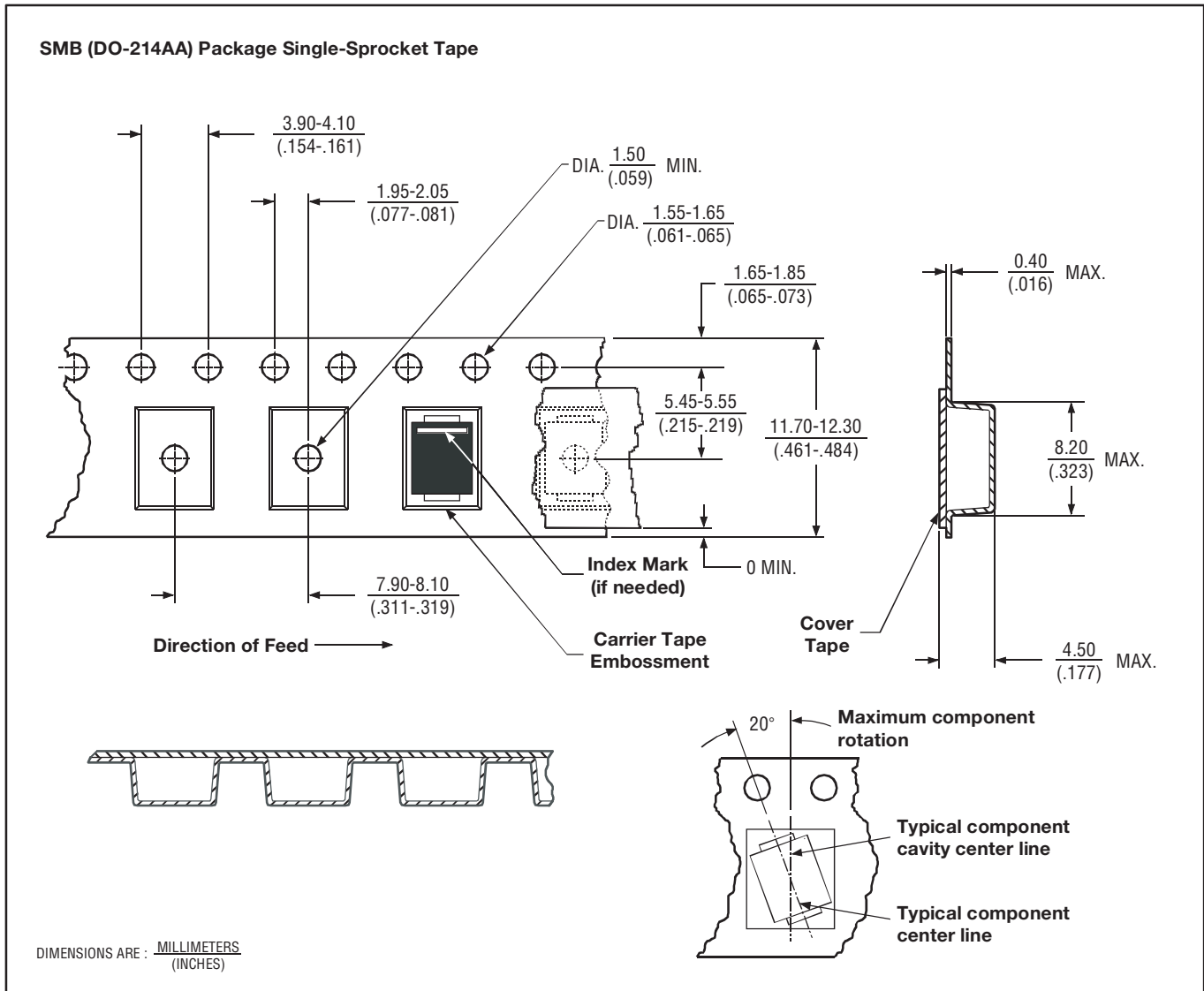


MD-SMB-001-a

AUGUST 2003

Specifications are subject to change without notice.
Customers should verify actual device performance in their specific applications.

Tape Dimensions



MD-SMB-002-a

NOTES: A. The clearance between the component and the cavity must be within 0.05 mm (.002 in) MIN. to 0.65 mm (.026 in) MAX. so that the component cannot rotate more than 20° within the determined cavity.

B. Taped devices are supplied on a reel of the following dimensions:-

Reel diameter: 330 mm ±3.0 mm (12.99 in ±.118 in)
 Reel hub diameter: 75 mm (2.95 in) MIN.
 Reel axial hole: 13.0 mm ±0.5 mm (.512 in ±.020 in)

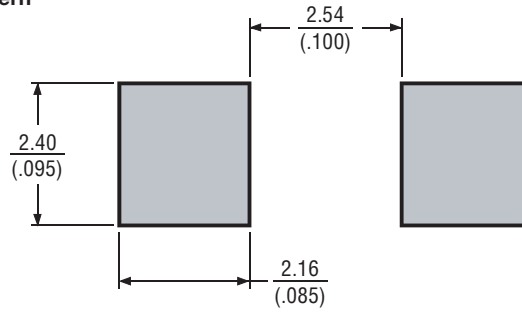
C. 3000 devices are on a reel.

AUGUST 2003

Specifications are subject to change without notice.
 Customers should verify actual device performance in their specific applications.

Recommended Printed Wiring Land Pattern Dimensions

SMB (DO-214AA) Land Pattern



DIMENSIONS ARE: $\frac{\text{MILLIMETERS}}{\text{(INCHES)}}$

MD-SMB-003-a