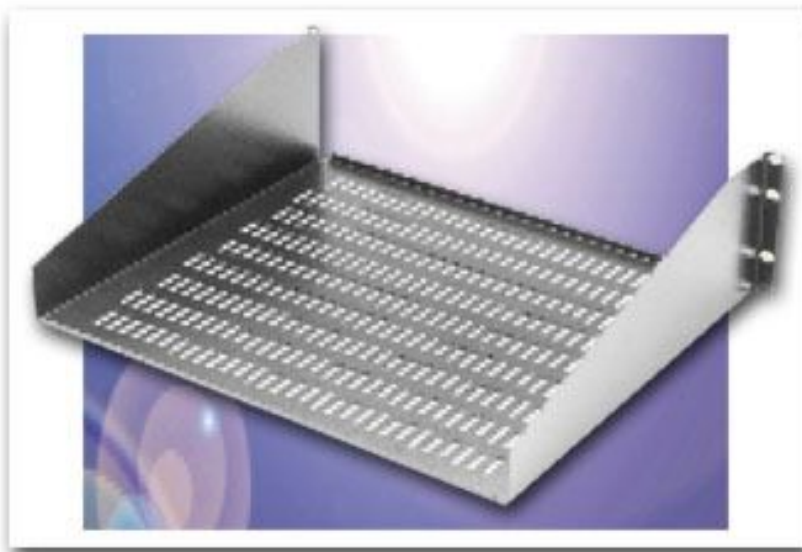




Accessories - Shelves  
**Equipment Shelf-  
 Open Rack**



***Design Features***

Open rack shelves fit 19" and 23" wide panel spaces and 5.25" panel height. Shelves are one-piece, 16 gauge steel and are flanged for added support. They are offered in non-ventilated and ventilated versions, and include all mounting hardware. Supports 150 Lbs. Finishes: Metallic Gray (MG), Black Texture (BT)

Equipment Shelf - Open Rack					
Catalog Number	Drawings	Type	Width	Depth	Est. Wt. Lbs.
SA-1748		Non-Ventilated	17.62"	10.00"	5.5
SA-1749		Ventilated	17.62"	10.00"	5.5
SA-1750		Non-Ventilated	17.62"	15.00"	8
SA-1751		Ventilated	17.62"	15.00"	8
SA-1752		Non-Ventilated	17.62"	20.00"	10.5
SA-1753		Ventilated	17.62"	20.00"	10.5
SA-1754		Non-Ventilated	21.62"	15.00"	9.25
SA-1755		Ventilated	21.62"	15.00"	9.25
SA-1756		Non-Ventilated	21.62"	20.00"	12

SA-1757		Ventilated	21.62"	20.00"	12
---------	--	------------	--------	--------	----

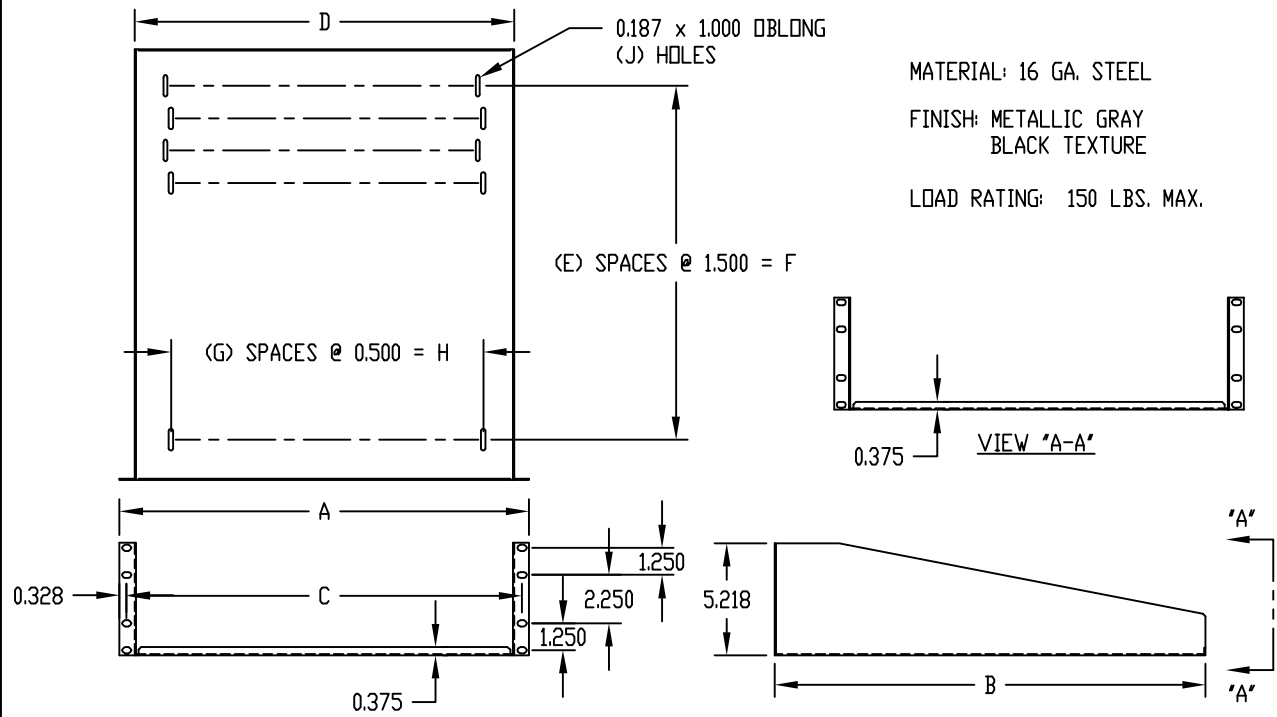


PART NAME

RELAY RACK SHELF

PART No.

SA-1748 THRU SA-1757



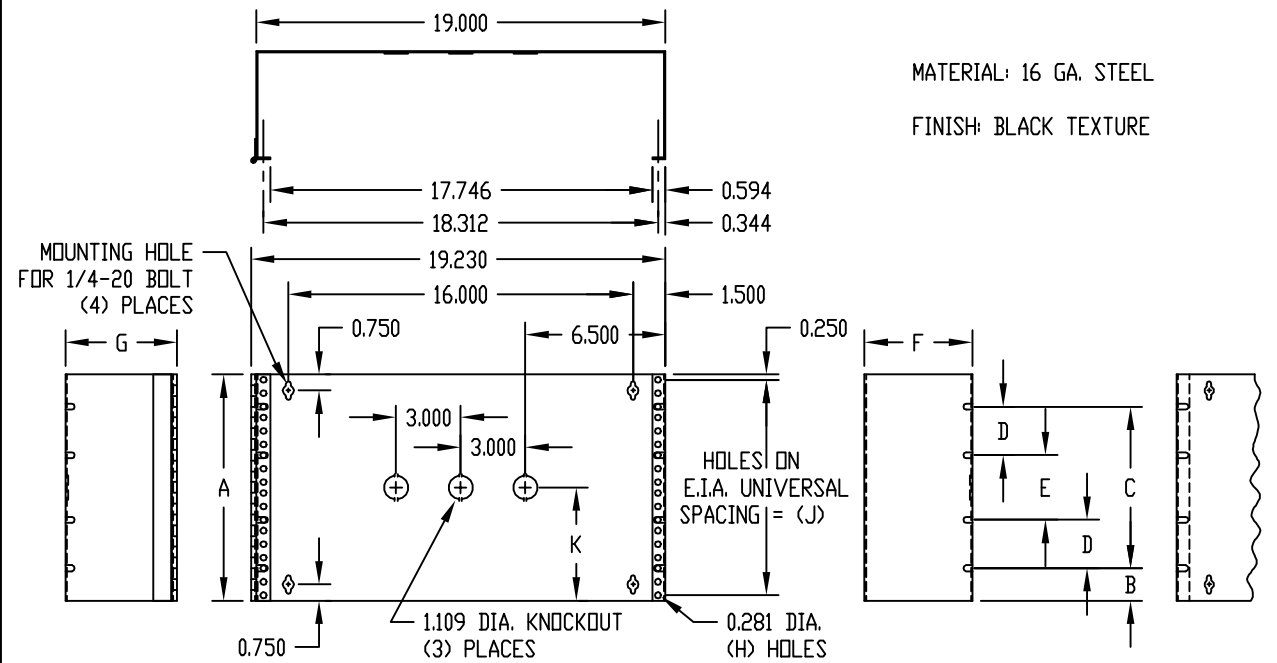
PLAIN	VENTED	A	B	C	D	E	F	G	H	J
SA-1748	SA-1749	19.000	10.000	18.344	17.625	5	7.500	29	14.500	180
SA-1750	SA-1751	19.000	15.000	18.344	17.625	8	12.000	29	14.500	270
SA-1752	SA-1753	19.000	20.000	18.344	17.625	11	16.500	29	14.500	360
SA-1754	SA-1755	23.000	15.000	22.344	21.625	8	12.000	37	18.500	342
SA-1756	SA-1757	23.000	20.000	22.344	21.625	11	16.500	37	18.500	456

PART NAME

HINGED WALL MOUNT BRACKET

PART No.

HWB-1790 THRU HWB-2792



PART NO.	A	B	C	D	E	F	G	H	J	K
HWB-1790	3.500	0.250	3.000	-----	-----	5.000	5.180	12	3.000	1.750
HWB-1791	5.250	1.500	2.250	-----	-----	5.000	5.180	18	4.750	2.625
HWB-1792	7.000	1.500	4.000	-----	-----	5.000	5.180	24	6.500	3.500
HWB-2790	3.500	0.250	3.000	-----	-----	8.000	8.180	12	3.000	1.750
HWB-2791	5.250	1.500	2.250	-----	-----	8.000	8.180	18	4.750	2.625
HWB-2792	7.000	1.500	4.000	-----	-----	8.000	8.180	24	6.500	3.500