

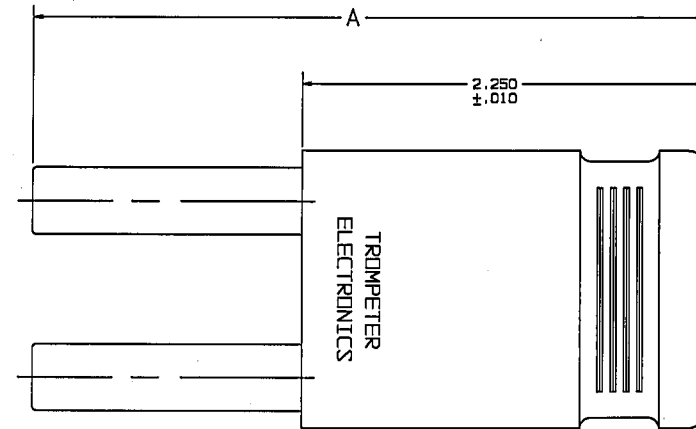
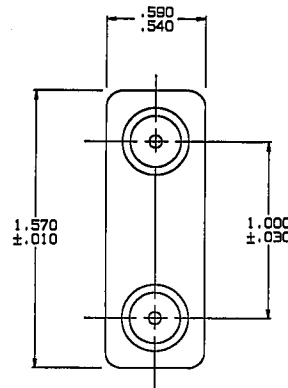
RED INDICATES ORIGINAL

DATA CONTAINED IN THIS DOCUMENT IS PROPRIETARY TO TROMPETER ELECTRONICS, INC. AND SHALL NOT BE REPRODUCED, COPIED OR USED FOR REPRODUCTION OR MANUFACTURE WITHOUT EXPRESS WRITTEN PERMISSION.

REV		ED	DESCRIPTION	DWN	APPROVED	DATE
H		12680	CHANGED CASE COLOR TO GREEN/BLACK FOR -7 SEE ECD	R L	<i>[Signature]</i>	12/23/98

DASH NO	MODEL NO	IMPEDANCE VALUE	CASE COLOR	A DIM
-1	LPL-50	50 OHMS	GREEN	3.765
-W1	LPLW-50 $\triangle A$			3.458
-2	LPL-75	75 OHMS	VIOLET	3.765
-W2	LPLW-75 $\triangle A$			3.458
-3	LPL-93	93 OHMS	WHITE	3.765
-W3	LPLW-93 $\triangle A$			3.458
-4	LPL-4 $\triangle S$	$\triangle S$	BLACK	3.765
-W4	LPLW-4 $\triangle S \triangle A$			3.458
-5	LPL-5 $\triangle S$		RED	3.765
-W5	LPLW-5 $\triangle S \triangle A$		3.458	
-6	LPL-6 $\triangle S$		GRAY	3.765
-W6	LPLW-6 $\triangle S \triangle A$		3.458	
-7	LPL-7 $\triangle S$		GREEN/BLACK	3.765

INCH	MM
.010	0.25
.030	0.76
.540	13.72
.590	14.99
1.000	25.40
1.570	39.88
2.250	57.15
3.458	87.83
3.765	95.63



-W2, -W4-75, -W5-75 & -W6-75 SHOWN

- $\triangle A$ 50 Ω DOUBLE SHIELDED RG223-M17/167-00001
- $\triangle S$ IMPEDANCE VALUE OF -4 THRU -W6, MAY BE -50, -75, OR -93 (OHMS). EXAMPLE: 1-0338-4-50, -4 -75, ETC
- $\triangle A$ PREFIX "W" DENOTES AT&T TYPE. ALL OTHERS RCA
- 3. COAXIAL LARGE SPACING STANDARD SIZE LOOPING PLUG
- 2. FINISH: BARRELS, TFS-1A OR TFS-1U (NICKEL) CASE (SEE CHART)
- 1. ALL DIMENSIONS ARE IN INCHES

QTY	DESCRIPTION	PART NUMBER	ITEM
TOL. UNLESS SPECIFIED ±.001 ±.0005 ±.0002 ANGLES	TROMPETER ELECTRONICS, INC.	LPL / LPLW	
155-0572	DWN R L 12/21/98	MATERIAL	CODE IDENT
155-0552	CHK <i>[Signature]</i> 12-22-98	14949	1-0338
NEXT ASSY	ENGR <i>[Signature]</i>	SCALE: 1/1	DATE 6-12-69 SHEET 1 OF 2