



- Reduces AC Current Signals Down to 4-20 DC mA
- Seven AC Current Ranges Available
- Accuracy $\pm 0.5\%$ F.S.
- Perfect for Use with Digital DC Process Panel Indicators and Controllers
- Screw Terminals for Easy Connection
- Operates on 24V DC Power

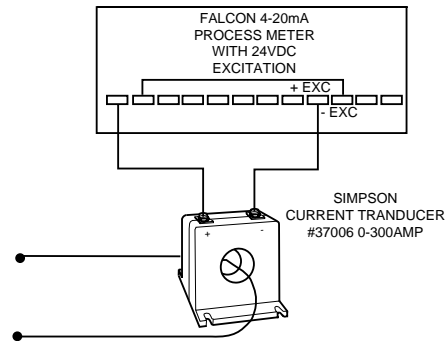


Current transducers expand the capability of a DC Process panel meter to include monitoring AC Current levels. The current transducer converts the AC Current into a 4-20 DC mA output signal, which can be monitored by the Process meter.

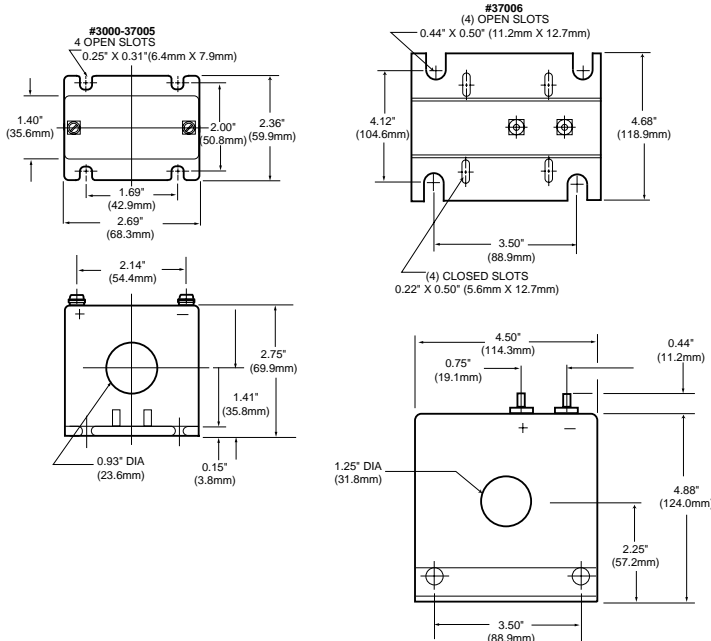
The current transducer requires a power supply of 24VDC, which can be provided by a DC Process meter with a 24VDC excitation output. Most Process meters also allow easy display scaling to indicate the level of AC Current being measured.

To measure AC Current of 300 Amperes, the current transducer #37006 can be wired up directly to a 4-20mA process meter, as illustrated at the right. The current transducer measures the primary current, and the transducer is connected to the Process meter, which is scaled to display AC current.

Typical Application Wiring



Dimensions, Specifications and Ordering Information



Specifications

- ACCURACY: $\pm 0.5\%$ F.S. max.
- FREQUENCY: 60Hz
- INSULATION CLASS: 600V
- MAX. OUTPUT: 30DCmA
- WEIGHT: 1.5lb (680.39g)
- TEMP. EFFECT: Accuracy: $\pm 0.04\%/^{\circ}\text{C}$
- Operating: -30°C to $+65^{\circ}\text{C}$
- Storage: -55°C to $+85^{\circ}\text{C}$
- SUPPLY VOLTAGE: 24 VDC $\pm 10\%$

Ordering Information

Input Current Range(ACA)	Output Current Range(DCmA)	Catalog Number
0-5 A	4-20mA	37000
0-50 A	4-20mA	37001
0-75 A	4-20mA	37002
0-100 A	4-20mA	37003
0-150 A	4-20mA	37004
0-200 A	4-20mA	37005
0-300 A	4-20mA	37006