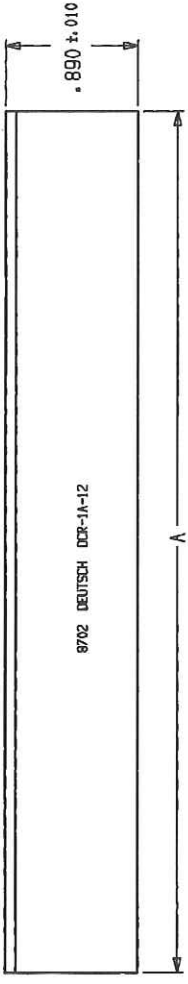
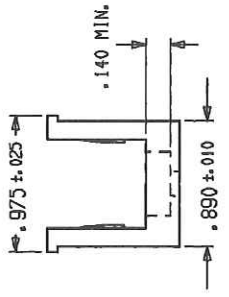
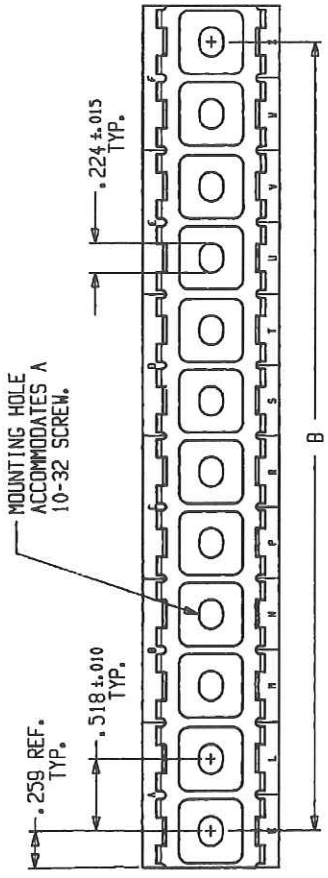


| REV | DESCRIPTION |
|-----|----------------------------|
| N/C | NEW RELEASE PER E.O. A7417 |
| A | REVISED PER E.O. A7729 |
| B | REVISED PER E.O. A10425 |
| C | REVISED PER E.O. D0369 |

12/11/87
L STOLLE



| ## | A ±.015 | B ±.010 | WEIGHT (Gms.) | WEIGHT (Ozs.) |
|----|---------|---------|---------------|---------------|
| 02 | 1.036 | .518 | 5.30 | .19 |
| 03 | 1.554 | 1.036 | 7.95 | .28 |
| 04 | 2.072 | 1.554 | 10.60 | .37 |
| 05 | 2.590 | 2.072 | 13.25 | .47 |
| 06 | 3.108 | 2.590 | 15.90 | .56 |
| 07 | 3.626 | 3.108 | 18.55 | .65 |
| 08 | 4.144 | 3.626 | 21.20 | .75 |
| 09 | 4.662 | 4.144 | 23.85 | .84 |
| 10 | 5.180 | 4.662 | 26.50 | .93 |
| 11 | 5.698 | 5.180 | 29.15 | 1.03 |
| 12 | 6.216 | 5.698 | 31.80 | 1.12 |
| 13 | 6.734 | 6.216 | 34.45 | 1.21 |
| 14 | 7.252 | 6.734 | 37.10 | 1.31 |
| 15 | 7.770 | 7.252 | 39.75 | 1.40 |
| 16 | 8.288 | 7.770 | 42.40 | 1.50 |

| ## | A ±.015 | B ±.010 | WEIGHT (Gms.) | WEIGHT (Ozs.) |
|----|---------|---------|---------------|---------------|
| 17 | 8.806 | 8.288 | 45.05 | 1.59 |
| 18 | 9.324 | 8.806 | 47.70 | 1.68 |
| 19 | 9.842 | 9.324 | 50.35 | 1.78 |
| 20 | 10.360 | 9.842 | 53.00 | 1.87 |

DCR-1A-12

- MATERIAL: THERMOPLASTIC (C)
- THE COMPOSITE RAIL MEETS OR EXCEEDS THE MECHANICAL AND ENVIRONMENTAL REQUIREMENTS OF MIL-T-81714.
- OPERATING TEMPERATURE: -55°C TO +175°C. MAX. PULLOUT LOAD OF 10 LBS. AT +175°C.
- RAIL PART NO. BREAKDOWN:
DCR-1 # - ##
LENGTH
FINISH: A = BLACK COMPOSITE
BASIC IDENTIFICATION

NOTE: 1. DIMENSIONS ARE IN INCHES UNLESS OTHERWISE SPECIFIED.

DCR-1X-XXENV

CP DEUTSCH 16
MUNICIPAL AIRPORT
BENNING, CALIFORNIA

COMPOSITE RAIL
CTJ
ENVELOPE

12/11/87
L STOLLE

12/11/87
L STOLLE

DCR-1A-12

Mouser Electronics

Authorized Distributor

Click to View Pricing, Inventory, Delivery & Lifecycle Information:

TE Connectivity:

[DCR-1A-08](#) [DCR-1A-05](#) [DCR-1A-06](#) [DCR-1A-04](#) [DCR-1A-04-4010](#) [DCR-1A-02](#) [DCR-1A-13-4010](#) [DCR-1A-20](#)
[DCR-1A-04-4032](#) [DCR-1A-13](#) [DCR-1A-06-4021](#) [DCR-1A-05-4021](#) [DCR-1A-18](#) [DCR-1A-16](#) [DCR-1A-06-4010](#) [DCR-](#)
[1A-14](#) [DCR-1A-02-4032](#) [DCR-1A-10-4021](#) [DCR-1A-07](#) [DCR-1A-17](#) [DCR-1A-11](#) [DCR-1A-15](#) [DCR-1A-02-4010](#)
[DCR-1A-03-4021](#) [DCR-1A-10-4010](#) [DCR-1A-11-4010](#) [DCR-1A-16-4021](#) [DCR-1A-19](#) [DCR-1A-05-4010](#) [DCR-1A-10](#)
[DCR-1A-02-4021](#) [DCR-1A-15-4032](#) [DCR-1A-03](#) [DCR-1A-12](#) [DCR-1A-09](#)