

4

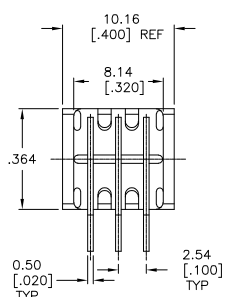
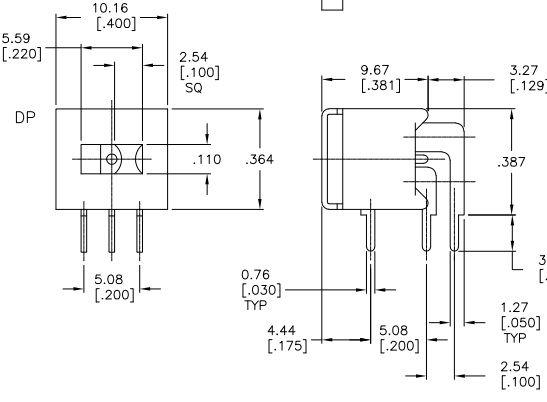
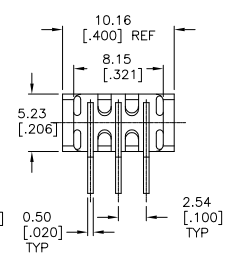
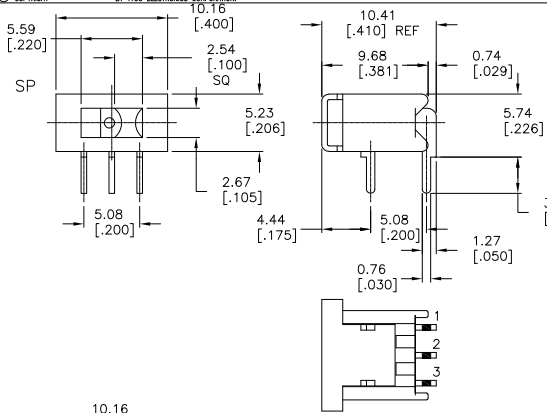
3

2

1

THIS DRAWING IS UNPUBLISHED. RELEASED FOR PUBLICATION. BY TYCO ELECTRONICS CORPORATION. ALL RIGHTS RESERVED.

LOC	DIST	REVISIONS			DATE	BY	APP'D
P	LTR	DESCRIPTION					
A1		ECO-06-5985			14MAR06	MB	MS



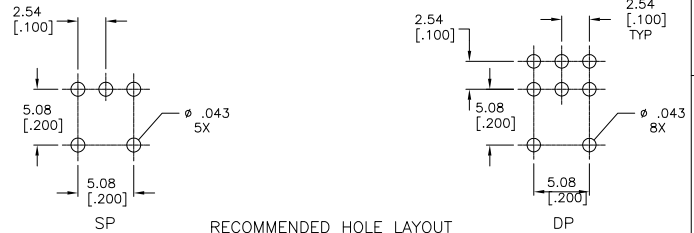
SPECIFICATIONS:
MATERIALS:
CASE-HIGH TEMPERATURE POLYESTER, BLACK
ACTUATOR-POLYESTER, UL94V-0, BLACK
FRAME-STEEL, TIN PLATE
MOVING CONTACT-COPPER ALLOY, GOLD OVER NICKEL PLATE
FIXED CONTACT-COPPER ALLOY, GOLD OVER NICKEL PLATE
TERMINAL-COPPER ALLOY, TIN OVER NICKEL PLATE

ELECTRICAL:
CURRENT RATING: 0.4 VA MAX. 20 V MAX. (AC/DC).
INITIAL CONTACT RESISTANCE: 40 MILLIOHMS MAX.
INSULATION RESISTANCE: OVER 1,000 MEGOHMS @ 500 VDC.
DIELECTRIC STRENGTH: 1,000 VAC RMS @ SEA LEVEL.
LIFE EXPECTANCY: 60,000-80,000 CYCLES

MECHANICAL:
ACTUATION FORCE 150-600 GRAMS

ENVIRONMENTAL:
OPERATING TEMPERATURE: -4°F TO +176°F (-20°C TO +80°C)
STORAGE TEMPERATURE: -4°F TO +176°F (-20°C TO +80°C)
SOLDER HEAT RESISTANCE PER EIA-364-56A, PROCEDURE 3, COND. B
SOLDERABILITY PER EID 364-52, CLASS 2 CATEGORY 1

1. ALL MATERIALS AND FINISHES SHALL COMPLY WITH EU DIRECTIVE 2002/95/EC OF 27JAN2003 (ROHS).



RECOMMENDED HOLE LAYOUT
LAYOUT TOLERANCES ±0.005[.002]

Tyco P/N	Alco P/N	Actuator Flush/Extended	Position	Type			
1571985-1	TSS11DG1RA04	Flush	2	SPDT	1,2 4,5,6	None	2,3
1571985-2	TSS11EG1RA04	Flush	3	SPDT	1,2	Off	2,3
1571985-3	TSS11NG1RA04	Flush	2	DPDT	1-2, 4-5	None	2-3, 5-6
1571985-4	TSS11PG1RA04	Flush	3	DPDT	1-2, 4-5	Off	2-3, 5-6



AMP 1471-9 REV 31MM2000

THIS DRAWING IS A CONTROLLED DOCUMENT.

DIMENSIONS: INCHES	TYCO ELECTRONICS CORPORATION	DATE: 06-2006	BY: M. GARVER	APP'D: M. GARVER	NAME: M. GARVER	PRODUCT SPEC: TSS11DGRA & TSS11EGRA SP RA FLUSH SLIDER	SIZE: A2	CAGE CODE: 00779	DRAWING NO: 1571985	RESTRICTED TO: -
MATERIAL: SEE SPECIFICATIONS	FINISH: -	APPLICATION SPEC: 1-2, 4-5	WEIGHT: -	CUSTOMER DRAWING	SCALE: 1:1	SHEET: 1 of 1	REV: A1			

1571985

A