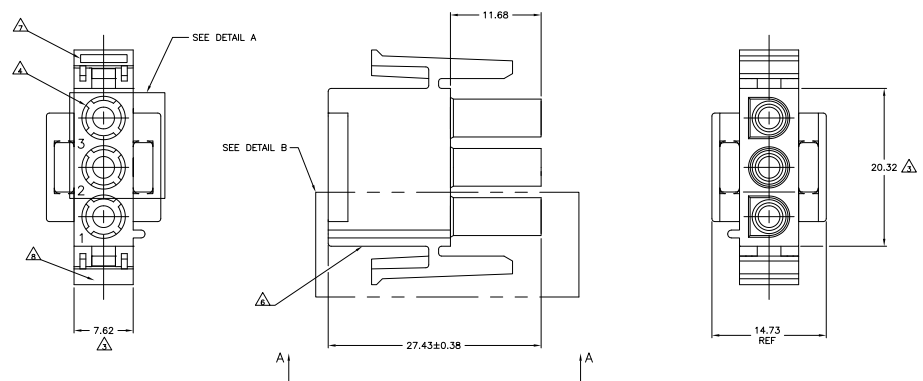
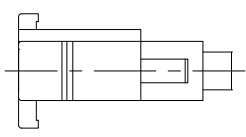


THIS DRAWING IS UNPUBLISHED  
 ALL RIGHTS RESERVED

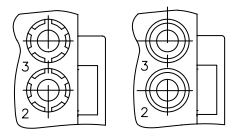
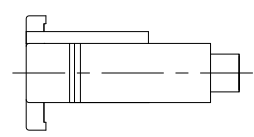
REV	DATE	DESCRIPTION	BY	CHK	APP
00					
01		REVISED PER EDD-11-004587			



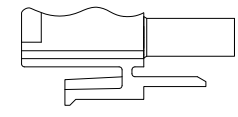
- MATES WITH APPROPRIATE UNIVERSAL MATE-N-LOK™ CAP OR HEADER.
  - SMALL NICKS ARE PERMITTED ON THE CIRCUIT TOWERS WHICH COULD INCREASE THE INITIAL HOUSING MATING FORCE BY UP TO 4.4 NEWTONS [1.0 LBS]. NO INDIVIDUAL NICKED TOWER SHALL INCREASE THIS FORCE BY OVER 2.2 NEWTONS [0.5 LBS].
- △ DIMENSION INDICATED IS AS MOLDED. ADDITIONAL GROWTH DUE TO SUBSEQUENT MOISTURE ABSORPTION MAY OCCUR.
  - △ FOUR RIBS EQUALLY SPACED, NO SPECIFIC ORIENTATION. NO RIBS OR SIX RIBS EQUALLY SPACED, NO SPECIFIC ORIENTATION, OPTIONAL.
  - △ NOT MANUFACTURED IN U.S.
  - △ UNDERWRITERS RECOGNIZED COMPONENT LOGO AND CSA CERTIFICATION LOGO TO BE LOCATED ONCE EACH ON SIDE OF HOUSING.
  - △ TRADEMARK LOCATION (AMP OR TE CONNECTIVITY).
  - △ MANUFACTURING LOCATION ID (OPTIONAL).



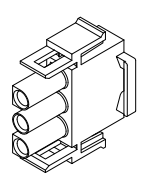
VIEW A-A  
350766-4 ONLY



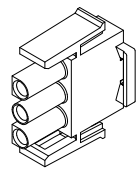
DETAIL A  
OPTIONAL CONSTRUCTION



DETAIL B  
350766-4 ONLY



350766-4 3-DIMENSIONAL MODEL  
NTS



3-DIMENSIONAL MODEL  
NTS

MM	IN
27.43	1.080
20.32	.800
14.73	.580
11.68	.460
7.62	.300
0.38	.015
0.13	.005
MM	IN

CONVERSION TABLE  
 488 01/01

COLOR	PART NUMBER
BLACK	1-350766-9
GRAY	1-350766-8
BLUE	1-350766-6
GREEN	1-350766-5
YELLOW	1-350766-4
ORANGE	1-350766-3
RED	1-350766-2
BROWN	1-350766-1
△	350766-4
△	350766-2
NATURAL	350766-1
COLOR	PART NUMBER



THIS DRAWING IS A CONTROLLED DOCUMENT.

DESIGNED BY	DESIGNED	DATE	REVISED BY	REVISED	DATE
DRN	DRN		DRN	DRN	
DATE	DATE		DATE	DATE	
BY	BY		BY	BY	
CHK	CHK		CHK	CHK	
APP	APP		APP	APP	

TE Connectivity  
 PLUG, 3 CIRCUIT,  
 UNIVERSAL MATE-N-LOK(TM)

SIZE DATE SIZE DRAWING NO. REVISED TO

000778 350766

CUSTOMER DRAWING

SCALE: 4:1