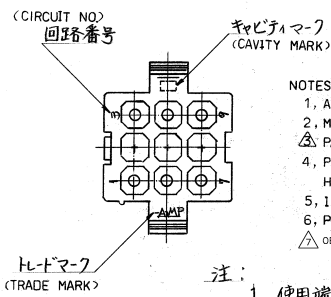
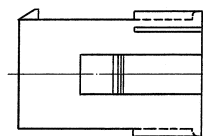
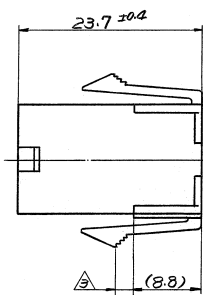
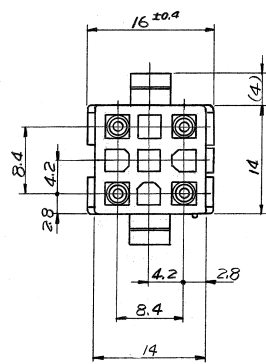


4  
三角法 (THIRD ANGLE PROJECTION)



- NOTES:
- 1, APPLIED CONTACT P/N : 170359, 170360, 170361, 17062
  - 2, MATING CONN : PLUG HOUSING P/N 172340
  - △ PANEL THICKNESS : 0.8 ~ 2.0 mm
  - 4, PRESS DIRECTION OF PANEL MUST BE SAME AS HOUSING INSERTED DIRECTION.
  - 5, INSTRUCTION SHEET : IS-105J
  - 6, PRODUCT SPEC : 108-5151
- △ OBSOLETE PARTS: OBSOLETE OIS STREAMLINING PER D.RENAUD/D.SINISI

- 注:
1. 使用端子型番は、170359, 170360, 170361, 170362
  2. 適合相手ハウジング型番は172340
  - △ 適用パネル厚 0.8 ~ 2.0 mm.
  4. 取付穴打抜方向とハウジングの挿入方向は同じとする
  5. 取扱説明書 : IS-105J
  6. 適用製品仕様書 : 108-5151

黄 (YELLOW)	1-172332	-4
黒 (BLACK)	1-	-9
青 (BLUE)	1-	-6
緑 (GREEN)	1-	-5
赤 (RED)	1-	-2
自然色 (NATURAL)	172332	-1
色 (COLOR)	並番 (P/N)	

△ OBSOLETE

寸法公差は 0.20  
(TOLERANCE : ± 0.2)  
パネル取付穴 (DIMENSION OF PANEL)

材料 (MATERIAL) 6/6 ナイロン (UL94V-2) (NYLON 6/6 UL94V-2)	一般公差 TOLERANCE EXCEPT ± 0.3 AS NOTED ± 1.0	
仕上 (FINISH) 色; 表参照 HOUSING COLOR : SEE TABLE	DR. <i>R. Yama</i> CHK. <i>T. Tomiyama</i> DE. <i>T. Tomiyama</i> APP.	

単位: 寸 寸法 DIMENSIONS IN MM. DO NOT SCALE PRINT

A3	REVISED PER ECO-11-005030	RK	HMR	2008/11
LTR.	変更 (REVISION RECORD)	DR.	CHK.	DATE

(CUSTOMER DRAWING) 参考図面