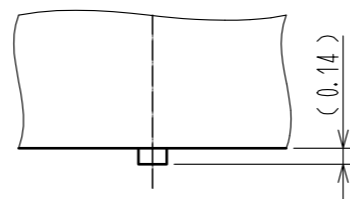
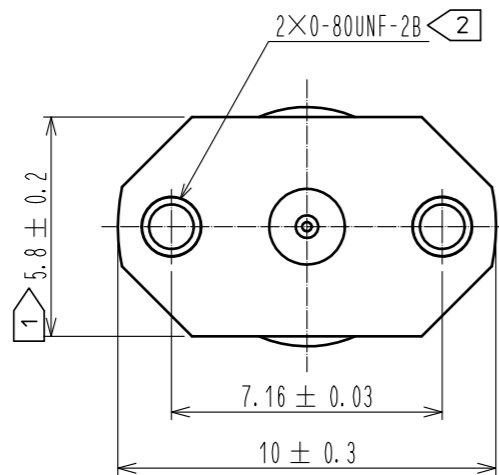
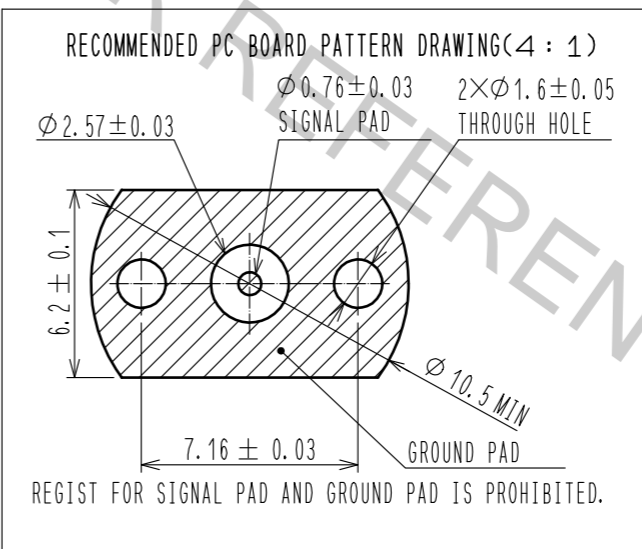
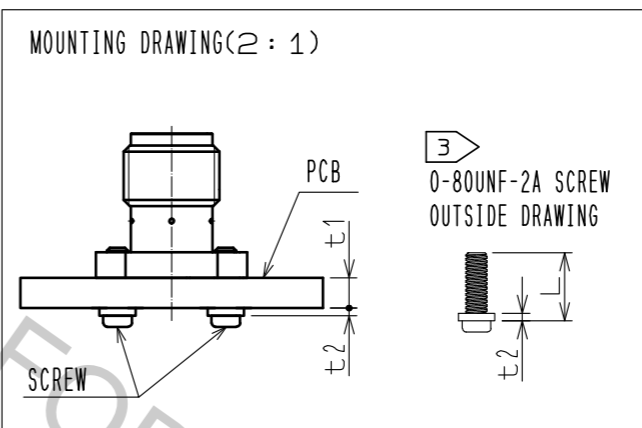
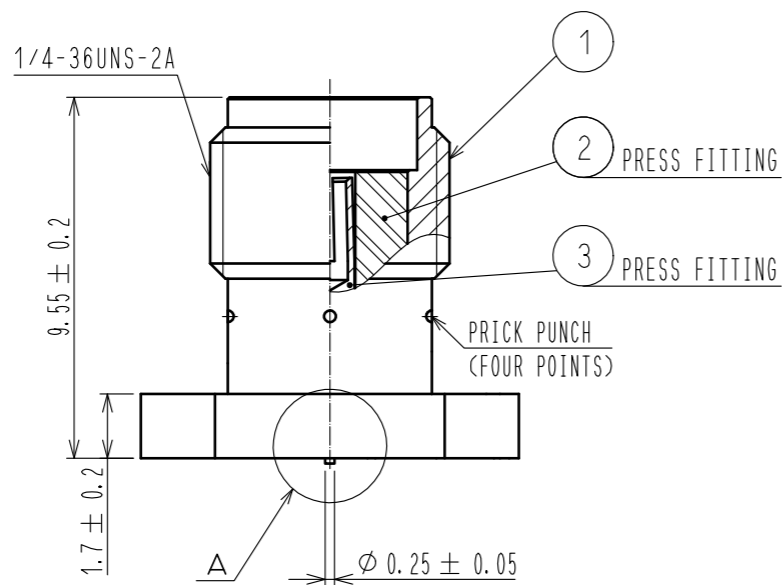
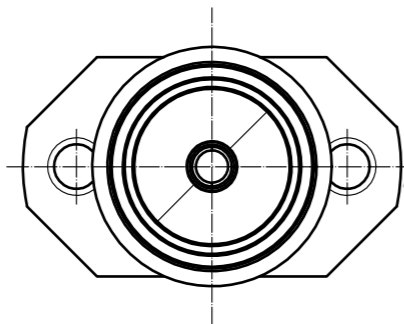


△ Unified screw thread type

A(10:1)



- NOTES
- ① WHEN THE MATING CONNECTOR, PLEASE HOLD MILLING AREA OF  $5.8 \pm 0.2$  WITH A WRENCH.
  - ② 0-80UNF-2B SCREW TIGHTENING TORQUE IS  $0.09N \cdot m$ .
  - ③ PLEASE USE A PCB MOUNTING SCREW OF THE LENGTH OF  $L(mm)$ .  
THE LENGTH OF  $L(mm)$  IS PCB THICKNESS  $t1(mm)$  + SPRING WASHER THICKNESS  $t2(mm)$  +  $2(mm)$ .  
PLEASE USE A SCREW WITH SPRING WASHER.



RoHS COMPLIANT

2	PTFE							
1	BRASS	GOLD PLATING		3	BERYLLIUM COPPER	GOLD PLATING		
NO.	MATERIAL	FINISH . REMARKS		NO.	MATERIAL	FINISH . REMARKS		
UNITS mm		SCALE 5 : 1	COUNT 2	DESCRIPTION OF REVISIONS DIS-D-00001227		DESIGNED YI. FUNADA	CHECKED MH. TSUCHIDA	DATE 16.06.03
<b>HRS</b> HIROSE ELECTRIC CO., LTD.		APPROVED : MH. YAMANE	12.02.10	DRAWING NO. EDC3-339103-00				
		CHECKED : MH. TSUCHIDA	12.02.10	PART NO. HRMCG-300-468B-1				
		DESIGNED : RO. YOKOYAMA	12.02.10	CODE NO. CL323-0924-8-00				
		DRAWN : RO. YOKOYAMA	12.02.10					