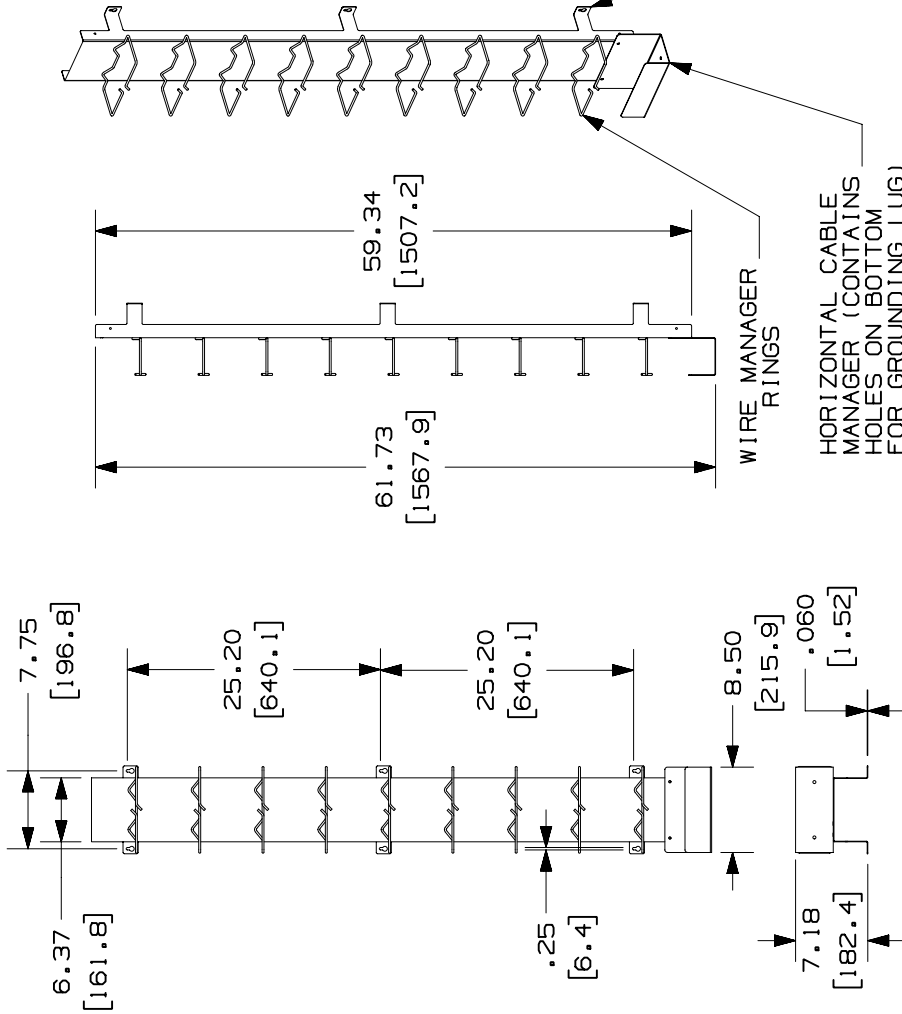


THIS COPY IS PROVIDED ON A RESTRICTED BASIS AND IS NOT TO BE USED IN ANY WAY DETRIMENTAL TO THE INTERESTS OF PANDUIT CORP.



- NOTES:
- SEE CURRENT CATALOG FOR ADDITIONAL PART NUMBER SUFFIXES TO INDICATE COLOR AND OR PACKAGE QUANTITY. THIS PART IS DESIGNED FOR VERTICAL CABLE MANAGEMENT.
 - A FASTENER KIT IS INCLUDED FOR MOUNTING THE HORIZONTAL CABLE MANAGER TO THE BASE CABLE MANAGER AND ALSO TO INSTALL THE GROUNDING LUG, IT INCLUDES THE FOLLOWING ITEMS:
 - (2) #12 X 1/2" TYPE B SHEET METAL SCREWS
 - (2) #12 EXTERNAL TOOTH LOCK WASHERS
 - (1) 1/4-20 X 3/4" MACHINE SCREW
 - (1) 1/4" -20 HEX NUT
 - (2) 1/4" EXTERNAL LOCK WASHERS
 - (1) GROUNDING LUG
 - DIMENSIONS IN PARENTHESES ARE IN METRIC.

PANDUIT PART NO.	WEIGHT
P110VCM900	13.71 LB/ea 4237.0 g/ea

CAD FILENAME/LAYERS D35536CQ_DC_ASSY900_00A.PRT

<p>PANDUIT CORP. TINLEY PARK, ILLINOIS</p> <p>900 PAIR 110 CABLE MANAGER (P110VCM900) CUSTOMER DRAWING</p>		<p>UNLESS OTHERWISE SPECIFIED, DIMENSIONAL TOLERANCES ARE:</p> <p>(.X) ± (.XXX) ±.010(.3)</p> <p>(.XX) ±.03(.8) ANGLES ±</p>		<p>UNLESS OTHERWISE SPECIFIED, ALL DIMENSIONS ARE GIVEN IN INCHES, THIRD ANGLE PROJECTION.</p>				
		<p>DRAWN BY: RCA</p> <p>DATE: 2-14-97</p> <p>CHK'D:</p>	<p>MAT'L:</p> <p>SEE NOTES</p>	<p>SCALE: NONE</p> <p>DRAWING NO.: 35536-31</p>	<p>DRG SIZE: A</p>			
REV	DATE	BY	CHK	DESCRIPTION				
R	2-14-97	RCA		35536-31	ECN	R	CUST	SUP