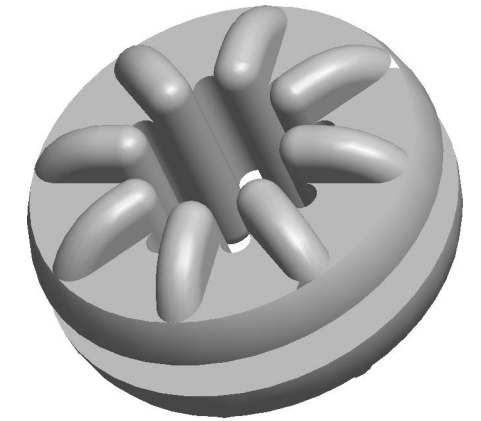
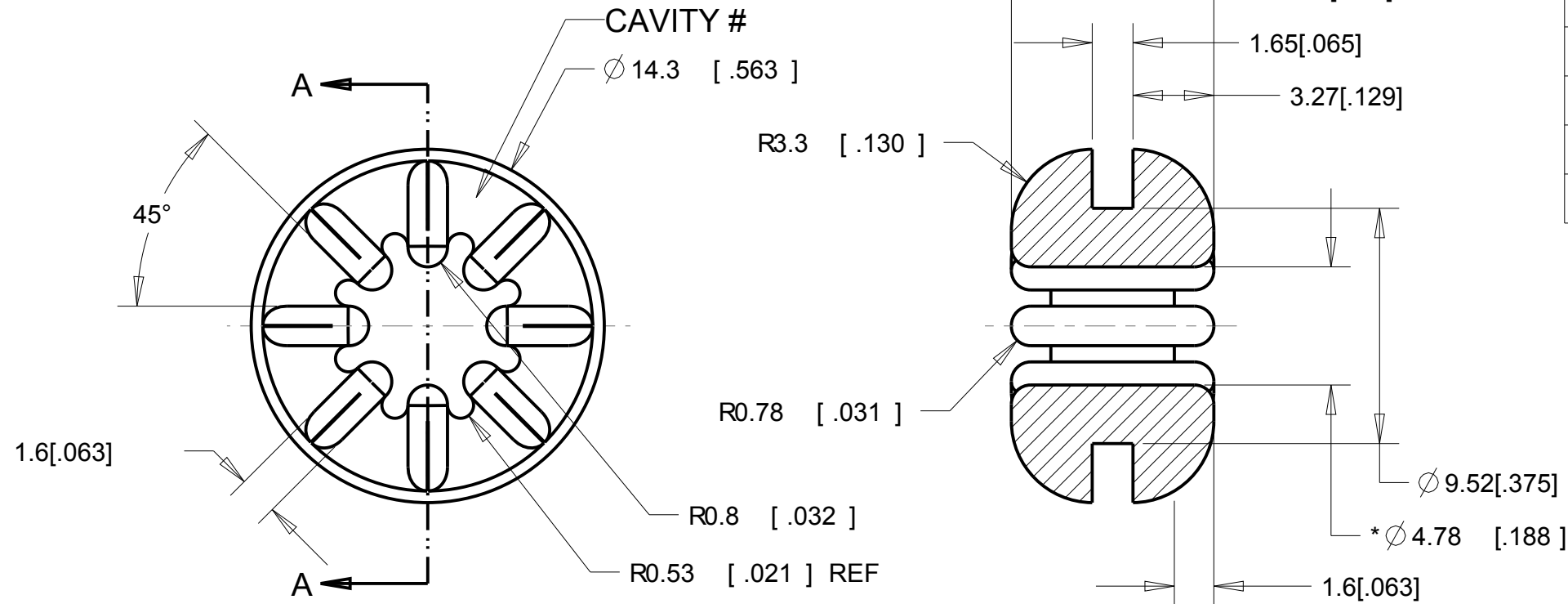




REVISIONS

DRAWN	REV	DESCRIPTION	DATE	APPROVED
PAM	00	INITIAL RELEASE	9-23-03	JS
BCC	01	PRODUCTION	3-2-04	JS
BCC	02	REF NOTE ADDED TO 45°	7-13-05	JS
TC	03	REVISED NOTES, CONSOLIDATED MATERIALS UPDATED FORMAT AND ADDED SL PAGE	5-5-10	JS
PAM	04	ADD CAVITY # LOCATION, ADD RADII DIMS	5-12-10	JS
KP/TC	05	UPDATED FORMAT, ADDED WEIGHT	9-6-11	MS



SECTION A-A

GROMMET MATERIAL	SEE PAGE
ISODAMP	1
VERSADAMP	1
ISOLOSS	2

G-411-V2375	V-2375
G-411-V2325	V-2325
G-411-C8012	C-8012
G-411-C8002	C-8002
G-411-C8001	C-8001
G-411-3	C-1100
G-411-2	C-1105
G-411-1	C-1002
PART NUMBER	MATERIAL

RANGE	TOL
0 < D ≤ 2 [.079]	± 0.15 [.006]
2 [.079] < D ≤ 25 [.984]	± 0.25 [.010]
25 [.984] < D ≤ 50 [1.969]	± 0.4 [.016]
50 [1.969] < D	± 0.6 [.024]

6. FOR ISOLOSS MATERIAL, USE THE TOLERANCE TABLE ON PAGE 2
5. FOR VERSADAMP AND ISODAMP MATERIAL, USE THE TOLERANCE TABLE ON PAGE 1
4. EIGHT RIBS PER SIDE ON EQUAL 45° CENTERS.
3. MAX DRAFT ALLOWED: 2°
2. CRITICAL DIMENSIONS SHALL HAVE Cpk VALUE ≥ 1.33 WITH ONGOING SPC DATA REQUIRED
1. CRITICAL DIMENSIONS ARE MARKED WITH "**".

NOTES:

UNLESS OTHERWISE SPECIFIED UNITS ARE: MM [IN] TOLERANCES ARE IN THE TABLE TO THE LEFT: ANGLES ± 1.0 °	MATERIAL: SEE TABLE ON LEFT	AEARO TECHNOLOGIES LLC * a 3M company	
	QUALITY CONTROL: MUST COMPLY WITH AEARO TECHONLOGIES LLC SUPPLIER QUALITY MANUAL REQUIREMENTS	TITLE GROMMET - SYMMETRIC, INTERNALLY RIBBED	
ALLOWABLE FLASH: 0.12 MM [.005]	GATE: ± 0.15MM [.006]	SIZE B	ITEM CODE
CALC WT 0.77 GRAM REF	NOTES: ANY FEATURE NOT DIMENSIONED IN PRINT MUST BE VISIBLY PRESENT, UTILIZE 3D CAD FOR CREATION	DWG NO. G-411-X PAGE 1 OF 2	



REVISIONS

D

D

C

C

B

B

A

A

1

2

3

4

1

2

3

4

G-411-SL60300	SL-60300
G-411-SL50300	SL-50300
G-411-SL35300	SL-35300
G-411-SL20300	SL-20300
PART NUMBER	MATERIAL

RANGE	TOL
0<D=<10 [.394]	± 0.15 [.006]
10 [.394]<D=<20 [.787]	± 0.2 [.008]
20 [.787]<D=<50 [1.969]	± 0.25 [.010]
50 [1.969]<D=<80 [3.150]	± 0.35 [.014]
80 [3.150]<D	±0.5%

UNLESS OTHERWISE SPECIFIED UNITS ARE: MM [IN] TOLERANCES ARE IN THE TABLE TO THE LEFT: ANGLES ±1.0 °	MATERIAL: SEE TABLE ON LEFT	AEARO TECHNOLOGIES LLC * a 3M company	
	ALLOWABLE FLASH: 0.3 MM [0.012]	QUALITY CONTROL: MUST COMPLY WITH AEARO TECHONOLGIES LLC SUPPLIER QUALITY MANUAL REQUIREMENTS	TITLE GROMMET - SYMMETRIC, INTERNALLY RIBBED
GATE:	NOTES: ANY FEATURE NOT DIMENSIONED IN PRINT MUST BE VISIBLY PRESENT, UTILIZE 3D CAD FOR CREATION	SIZE B	ITEM CODE
CALC WT 0.65 GRAM REF		DWG NO. G-411-X PAGE 2 OF 2	