

PN Series Alternate & Momentary Action Pushbutton Switches



A

Pushbutton

Features/Benefits

- **Momentary or locking action**
- **Different actuation forces for customized feel**
- **Low cost, reliable contact design**
- **Single and double pole options**
- **RoHS compliant**

Typical Applications

- **Computers and peripherals**
- **Instrumentation and measurement equipment**
- **Non-power, on-off switch applications**



Specifications

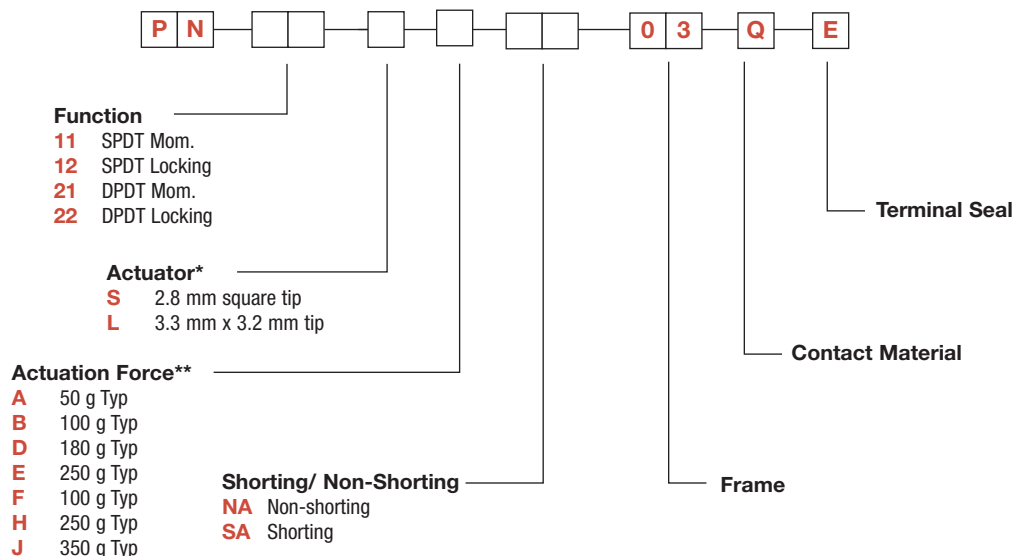
CONTACT RATING: 0.2 AMP @ 30 V DC max.
 ELECTRICAL LIFE: 10,000 make-and-break cycles at full load.
 MECHANICAL LIFE: 10,000 on/off cycles.
 CONTACT RESISTANCE: 30 mΩ max. initial
 INSULATION RESISTANCE: 100 MΩ min.
 DIELECTRIC STRENGTH: 500 V AC min.
 OPERATING/STORAGE TEMPERATURES: -10°C to 60°C.
 PACKAGING: Switches are supplied in anti-static trays.

Materials

FRAME: Tin plated steel.
 ACTUATOR: PA 66 black.
 BASE: Phenolic resin.
 TERMINALS: Silver plated brass.
 MOVABLE CONTACTS: Silver plated phosphor bronze.
 RETURN SPRING: SWC
 DETENT SPRING: Phosphor bronze.
 DETENT SPRING PLATE: Phosphor bronze.
 RETURN SPRING RETAINER RING: Nickel plated steel.
 TERMINAL SEAL: Epoxy.

Build-A-Switch

To order, simply select desired option from each category and place in the appropriate box. For additional options not shown in catalog, consult Customer Service Center.



* Note - The switch body style dimensions differ for each of these 3 groupings

"S" actuator available for PN 11 & PN 12 options

"S" actuator available for PN 21 & PN 22 options

"L" actuator available for PN 21 & PN 22 options

** Actuation Force "A" only available with PN11 with "S" actuator

PN 11 & PN 21 available with Actuation Force "B", "D", "E", "F", "H", "J"

PN 12 & PN 22 available with Actuation Force "D", "E", "H", "J"

Full travel



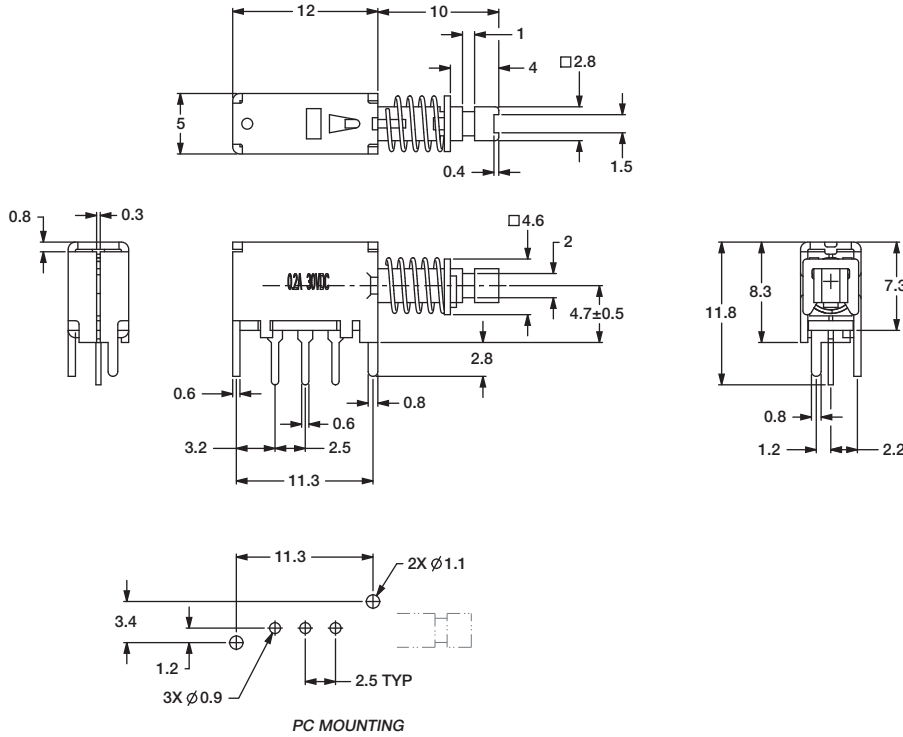
Specifications and dimensions subject to change



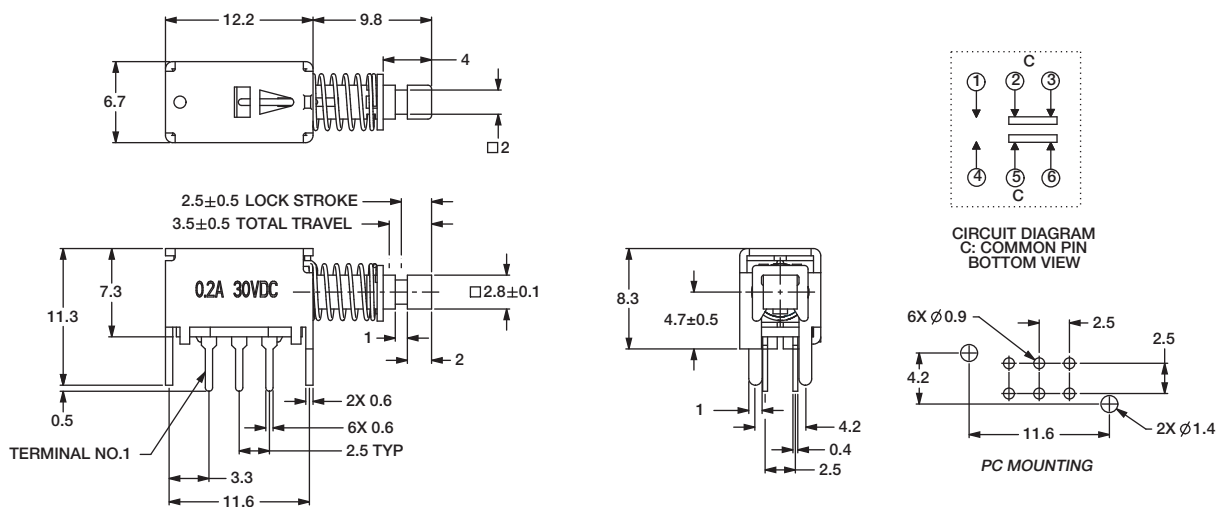
PN Series Alternate & Momentary Action Pushbutton Switches

Pushbutton
A

PN 11 SPDT Mom.
PN 12 SPDT Locking



PN 21 DPDT Mom. with "S" Actuator
PN 22 DPDT Locking with "S" Actuator



Dimensions are shown: mm
Specifications and dimensions subject to change



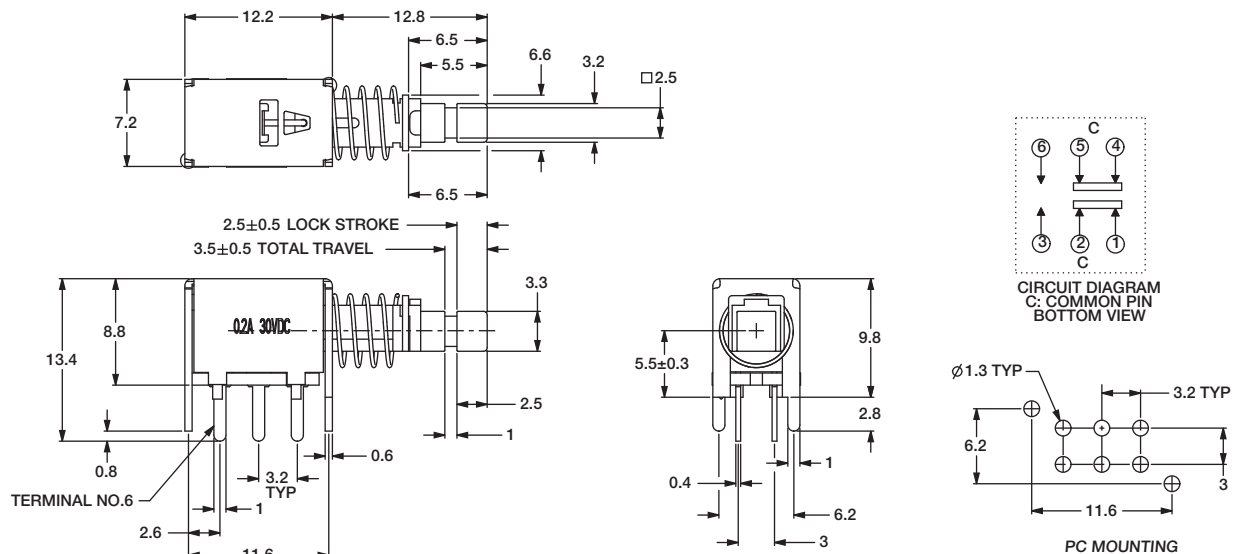
PN Series Alternate & Momentary Action Pushbutton Switches



A

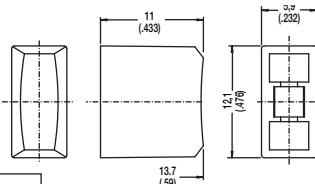
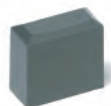
Pushbutton

PN 21 DPDT Mom. with "L" Actuator
PN 22 DPDT Locking with "L" Actuator



BUTTONS MUST BE ORDERED SEPARATELY. SHIPPED IN BULK.

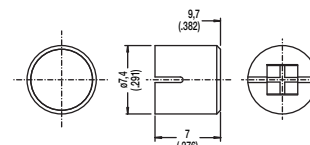
PE



OPTION CODE	COLOR
RD	Red
GY	Gray
BK	Black
WH	White

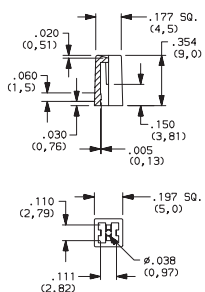
PE and PV buttons fit "L" actuators

PV



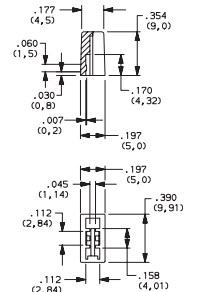
Indexed

G001A Black
G001G Gray
G001I Ivory
G001R Red



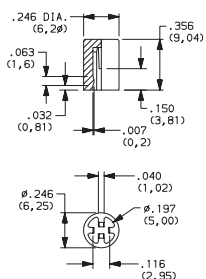
Rectangular

G002A Black
G002G Gray
G002I Ivory
G002R Red



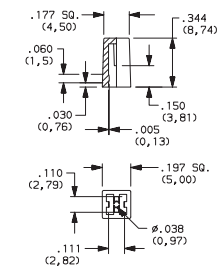
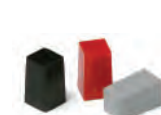
Round

G003A Black
G003G Gray
G003I Ivory
G003R Red

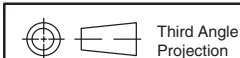


Square

G004A Black
G004G Gray
G004I Ivory
G004R Red



G001, G002, G003 and G004 buttons fit "S" actuators



Dimensions are shown: Inches (mm)
 Specifications and dimensions subject to change



www.ck-components.com

Mouser Electronics

Authorized Distributor

Click to View Pricing, Inventory, Delivery & Lifecycle Information:

C&K Components:

[G003A](#) [G003R](#) [G001A](#) [G001G](#) [G001R](#) [G002A](#) [G002G](#) [G002R](#) [G003G](#) [G004A](#) [G004G](#)