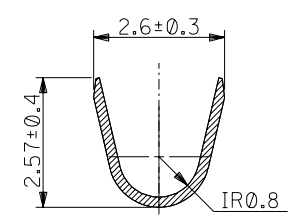
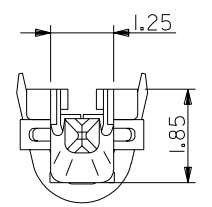


SECTION A-A



SECTION B-B



注記 NOTES

- 材質 MATERIAL
りん青銅 (板厚: 0.2)
PHOSPHOR BRONZE (THICKNESS: 0.2)
- メッキ仕様 TERMINAL PLATING
接点部: 金メッキ 0.25 μm MIN.
CONTACT AREA: GOLD 0.25 μm MIN.
圧着部: 半田メッキ 1.0 μm MIN.
CRIMP AREA: TIN-LEAD 1.0 μm MIN.
下地メッキ: ニッケルメッキ 2 μm MIN.
UNDER PLATE: NICKEL 2 μm MIN.
- 適用電線: UL 1007, AWG #24~28
APPLICABLE WIRE RANGE: UL1007, AWG #24~28
- 被覆外径: φ1.6 MAX.
INSULATION EXTERNAL DIA: φ1.6 MAX.
- 適用ハウジング: 51233-****, 51234-****
APPLICABLE HOUSING: 51233-****, 51234-****

バラ状 LOOSE	56118-8390	56118-8***
連鎖状 CHAIN	56118-8290	
端子形状 TERMINAL CONFIGURATION	MATERIAL No.	MODEL No.

DO NOT SCALE DRAWING

EC NO. DRWN: CHK: APPR:	EC NO. DRWN: CHK: APPR:	EC NO. DRWN: CHK: APPR:	EC NO. DRWN: CHK: APPR:	EC NO. DRWN: CHK: APPR:	RELEASED/03/06/20 EC NO. J2003-3238 DRWN: S.AKIYAMA CHK: J.MIYAZAWA APPR: YO.ITO	MATERIAL 材料 注記参照 SEE NOTES	GENERAL TOLERANCES: (UNLESS SPECIFIED) 一般公差	SCALE DESIGN UNITS THIRD ANGLE PROJECTION	DIMENSIONS: <input type="checkbox"/> mm <input type="checkbox"/> INCH <input checked="" type="checkbox"/> mm ONLY	SHT REV	REVISE ON CAD ONLY
						FINISH 仕上げ #	10 UNDER 未満 ±0.2	DRAWN BY & DATE <i>S. Akiyama</i> 03/01/29	TITLE: COMPACT ROBOT CONN. (CRC) CRIMP PIN		
						WIRE RANGE 適用電線範囲 #	10 OVER 30 UNDER 未満 ±0.25	CHECKED BY & DATE <i>J. Morawad</i>	MOLEX MOLEX INCORPORATED		
						INS. RANGE 被覆外径 #	30 OVER 以上 ±0.3	APPROVED BY & DATE <i>Y. Ito</i>	MATERIAL NO. DRAWING NO. SHEET NO.	SEE CHART SD-56118-001.S01	SD-56118-001 1 OF 1
THIS DRAWING CONTAINS INFORMATION THAT IS PROPRIETARY TO MOLEX INCORPORATED AND SHOULD NOT BE USED WITHOUT WRITTEN PERMISSION.										SIZE B	