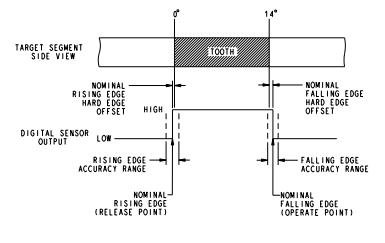
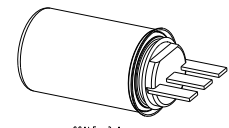
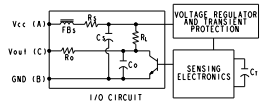
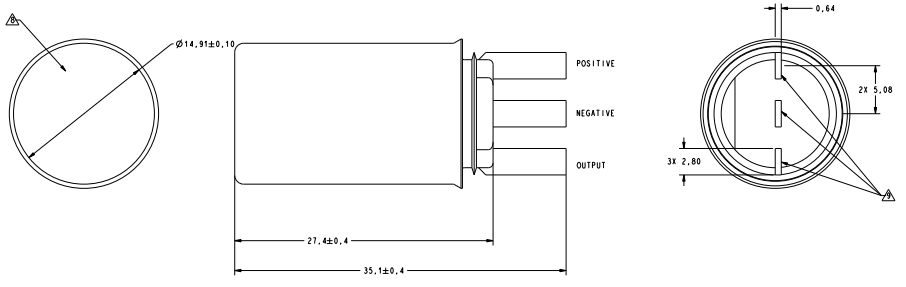


COMPONENT	VALUE
Fb3	1.6 Ω DC
R1	10 Ω
R0	100 Ω
Cs	0.1 μF
Ri	5.1 kΩ
Co	470 μF
C1	0.39 μF



- NOTES
- 1 TARGET SHOULD BE MADE OF GOOD MAGNETIC MATERIAL (IC-1018). ANNEAL AFTER MACHINING OR FORMING
 - 2 MAX LIMITS THAT SWITCH WILL WITHSTAND WITHOUT DAMAGE
 - 3 OPERATING SPECIFICATION IS BASED ON TARGET SHOWN IN FIGURE 1 AND WILL VARY WITH TARGET GEOMETRY
 - 4 POSITIVE (+) OPERATE POINTS OCCUR INTO THE SLOT. NEGATIVE (-) OPERATE POINTS OCCUR INTO THE TOOTH
 - 5 POSITIVE (+) RELEASE POINTS OCCUR INTO THE SLOT. NEGATIVE (-) RELEASE POINTS OCCUR INTO THE TOOTH
 - 6 ELECTRICAL CHARACTERISTICS ARE GUARANTEED WITH MAX EXTERNAL LOAD CAPACITANCE ≤ 1000 pF
 - 7 AIR GAP IS FROM SENSOR FACE TO TARGET
 - 8 CATALOG LISTING, DATE CODE AND SERIAL NUMBER LOCATED IN THIS AREA A METAL TO PLASTIC JOINT WHICH MAY ALLOW LIQUID INTRUSION DURING A LONG TERM SOAK
 - 9 REFERENCE TS 060 234 FOR THE TEST PLAN
 - 10 OPERATING SPECIFICATION RANGE WILL BE EXPANDED AFTER SENSOR IS EXPOSED TO TEMPERATURES ABOVE 150°C
 - 11 ANY ANOMALIES THAT OCCUR BELOW 5 MAZ ON THE OUTPUT PIN DURING THE BT INJECTION TESTING PER TS 060 234 ARE TO BE USED FOR INFORMATION ONLY

ABSOLUTE MAXIMUM RATINGS					
SUPPLY VOLTAGE	-13.5 TO 26.5 VDC				
STORAGE TEMPERATURE	-40° TO +150°C				
RECOMMENDED ELECTRICAL CONDITIONS					
PARAMETER	CONDITION	MIN	NOM	MAX	UNITS
SUPPLY VOLTAGE (Vcc)		4.5	13.8	16	VDC
EXCURSION SUPPLY VOLTAGE				26.5	VDC
SUPPLY CURRENT	Vcc = 16VDC			21	mA
OUTPUT VOLTAGE (OUTPUT LOW)				0.4	VDC
RISE TIME	10% TO 90%	15		27	μSEC
FALL TIME	90% TO 10%	0.2		1	μSEC
RECOMMENDED MECHANICAL CONDITIONS					
PARAMETER	CONDITION	MIN	NOM	MAX	UNITS
OPERATING TEMPERATURE	CONTINUOUS	-40		+150	°C
AIR GAP ΔZ (%)		0.1		2.0	mm
AXIAL RUNOUT ΔBT		-1.5		1.5	mm
TARGET SPEED				6000	RPM
SWITCHING CHARACTERISTICS					
PARAMETER	CONDITION	MIN	NOM	MAX	UNITS
RISING EDGE (RELEASE POINT) ACCURACY	TEMP: -40° TO 150° C AIRGAP: 0.2mm TO 1.5mm SPEED: 30 TO 6000 RPM AXIAL RUNOUT: -1.5mm TO 1.5mm	NOM. - 1.2°	TBD	NOM. + 1.2°	DEGREES ROTATION
FALLING EDGE (OPERATE POINT) ACCURACY	TEMP: -40° TO 150° C AIRGAP: 0.2mm TO 1.5mm SPEED: 30 TO 6000 RPM AXIAL RUNOUT: -1.5mm TO 1.5mm	NOM. - 1.0°	TBD	NOM. + 1.0°	DEGREES ROTATION
360° FALLING EDGE INTERVAL REPEATABILITY	RPM ≥ 300 SUPPLY VOLTAGE ≥ 9 Vdc TEMP: 0 - 6°C			0.050°	DEGREES ROTATION (RANGE)



UNLESS OTHERWISE SPECIFIED TOLERANCES ARE:	MIN	MAX	DRWN	TRF	21DEC99
NO. PLACE	± 0.04	± 0.1	CHECK	SAV	21DEC99
1ST PLACE	± 0.015	± 0.15	THIS DRAWING COVERS A PROPRIETARY ITEM AND IS THE PROPERTY OF HONEYWELL. THIS DRAWING IS NOT TO BE COPIED OR USED WITHOUT THE PERMISSION OF HONEYWELL.		
2ND PLACE	± 0.005	± 0.05	DIMENSIONS ARE TO BE MET BEFORE PROTECTIVE COATINGS ARE APPLIED		
3RD PLACE	± 0.0025	± 0.025	THIRD ANGLE PROJECTION		
HONEYWELL					
GEARTOOTH SENSOR					
P/C 30		NAME Y14.SW194	SCALE	5:1	WEIGHT
REV 3		DWG TYPE 1008001		DRAWING NAME	
SHEET 1 OF 1		SCALE		5:1	