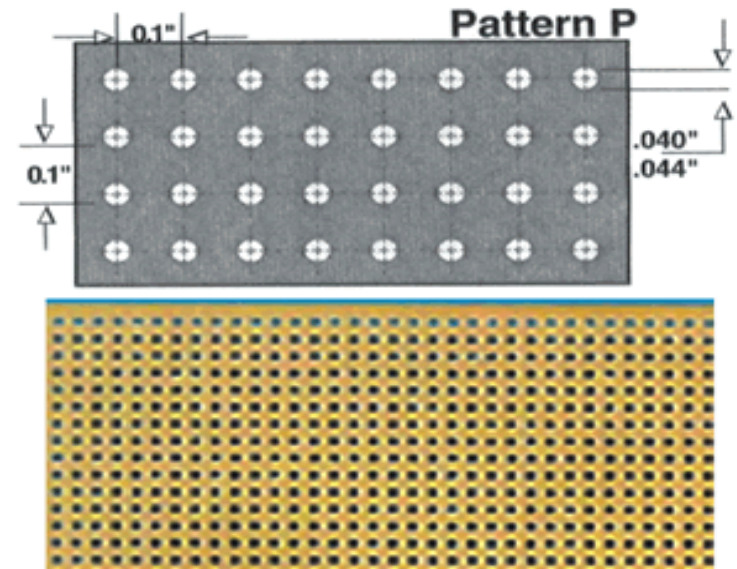


Vectorbord® Part Number : 84P44WE

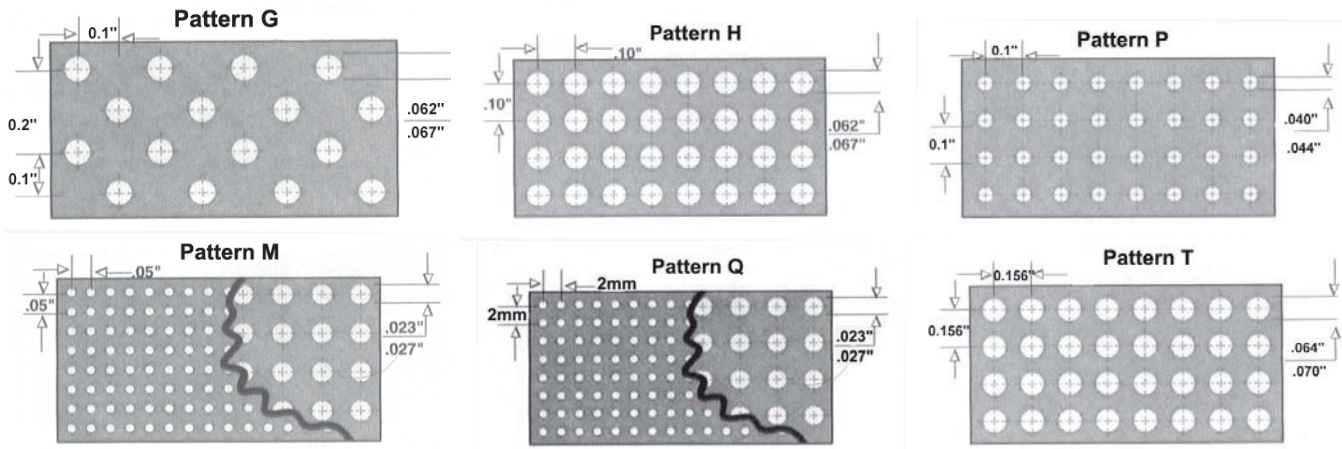
4.5" W x 8.5" L ... 0.042" Hole Dia. ...FR4 Epoxy Glass ... Unclad Punchbord

Dimension : 4.5" W x 8.5" L (114.3 x 215.9mm)
Hole Dia. : 0.042" (1.1mm)
Grid & Pattern : 0.100" x 0.100" and Pattern " P "
Board Thickness : 0.062" (1.57mm)
Material : FR4 Epoxy Glass
NEMA Grade : FR4
UL Flammability Class : 94V- 0
Mil - STD : MIL - P13949 Type GF



Vectorbord®

Vectorbord® general purpose pre-punched insulating punchboard is available in standard grid patterns shown below for assembling circuit components. Standard thickness is 1/16"(.062") except as noted. Vectorbord® is available in FR4 epoxy glass, FR2 phenolic, CEM-1 epoxy glass composite and **P96 GPY Hi-Temp laminate (NEW)**. Vectorbord® listed below is **copper clad or unclad only**. For 12" x 12" unpunched panels see pattern X at end of listing. Selection of terminals and other accessories located on Page . For a complete product list see Web page.



| Pattern | Part. No. | Width | Length | Thick | Hole | Material Description |
|---------|--------------|------------------|------------------|--------|------------------|--|
| G | 85G42WE | 8.50" | 17.00" | 0.062" | 0.062" | FR4 Epoxy Glass |
| P | 59P44-032 | 4.50" | 6.00" | 0.031" | 0.042" | FR4 Epoxy Glass |
| P | 64P44WE | 4.50" | 6.50" | 0.062" | 0.042" | FR4 Epoxy Glass |
| P | 64P44XXXP | 4.50" | 6.50" | 0.062" | 0.042" | FR2 Phenolic |
| P | 64P44 | 4.50" | 6.50" | 0.062" | 0.042" | CEM-1 Epoxy Glass Composite |
| P | 84P44WE | 4.50" | 8.50" | 0.062" | 0.042" | FR4 Epoxy Glass |
| P | 169P44C1 | 4.50" | 17.00" | 0.062" | 0.042" | CEM-1 Epoxy Glass Composite, 1oz. unplated copper, 1 side |
| P | 169P44 | 4.50" | 17.00" | 0.062" | 0.042" | CEM-1 Epoxy Glass Composite |
| P | 169P44XXXP | 4.50" | 17.00" | 0.062" | 0.042" | FR2 Phenolic |
| P | 169P44WEC1 | 4.50" | 17.00" | 0.062" | 0.042" | FR4 Epoxy Glass, 1oz. unplated copper, 1 side |
| P | 169P44WEC2 | 4.50" | 17.00" | 0.062" | 0.042" | FR4 Epoxy Glass, 1oz. unplated copper, 2 sides |
| P | 169P44WE | 4.50" | 17.00" | 0.062" | 0.042" | FR4 Epoxy Glass |
| P | 169P59-032 | 6.00" | 17.00" | 0.031" | 0.042" | FR4 Epoxy Glass |
| P | 169P59-047 | 6.00" | 17.00" | 0.047" | 0.042" | FR4 Epoxy Glass |
| P | 169P59C1 | 6.00" | 17.00" | 0.062" | 0.042" | CEM-1 Epoxy Glass Composite, 1oz. unplated copper, 1 side |
| P | 169P59XXXP | 6.00" | 17.00" | 0.062" | 0.042" | FR2 Phenolic |
| P | 169P79WE | 8.00" | 17.00" | 0.062" | 0.042" | FR4 Epoxy Glass |
| P | 169P79 | 8.00" | 17.00" | 0.062" | 0.042" | CEM-1 Epoxy Glass Composite |
| P | 169P84 | 8.50" | 17.00" | 0.062" | 0.042" | CEM-1 Epoxy Glass Composite |
| P | 169P84C1 | 8.50" | 17.00" | 0.062" | 0.042" | CEM-1 Epoxy Glass Composite, 1oz. unplated copper, 1 side |
| P | 169P84HT | 8.50" | 17.00" | 0.062" | 0.042" | GPY 260°C(TMA)Polyimide P96, no copper |
| P | 169P84HTC2 | 8.50" | 17.00" | 0.062" | 0.042" | GPY 260°C(TMA)Polyimide P96, 1oz. unplated copper, 2 sides |
| P | 64P44HT | 4.50" | 6.50" | 0.062" | 0.042" | GPY 260°C(TMA)Polyimide P96, no copper |
| P | 169P84WE | 8.50" | 17.00" | 0.062" | 0.042" | FR4 Epoxy Glass |
| P | 169P84WEC1 | 8.50" | 17.00" | 0.062" | 0.042" | FR4 Epoxy Glass, 1oz. unplated copper, 1 side |
| P | 349P84 | 8.50" | 35.00" | 0.062" | 0.042" | CEM-1 Epoxy Glass Composite |
| P | 169P99 | 10.00" | 17.00" | 0.062" | 0.042" | CEM-1 Epoxy Glass Composite |
| P | 169P99WE | 10.00" | 17.00" | 0.062" | 0.042" | FR4 Epoxy Glass |
| H | 85H48WE | 4.80" | 8.50" | 0.062" | 0.062" | FR4 Epoxy Glass |
| H | 170H48WE-032 | 4.80" | 17.00" | 0.032" | 0.062" | FR4 Epoxy Glass |
| H | 170H48WE | 4.80" | 17.00" | 0.062" | 0.062" | FR4 Epoxy Glass |
| H | 85H85WE | 8.50" | 8.50" | 0.062" | 0.062" | FR4 Epoxy Glass |
| H | 170H85WE | 8.50" | 17.00" | 0.062" | 0.062" | FR4 Epoxy Glass |
| H | 155H175WE | 16.00" | 18.00" | 0.062" | 0.062" | FR4 Epoxy Glass |
| M | 126M76-032 | 4.00" | 6.50" | 0.037" | 0.025" | FR4 Epoxy Glass |
| M | 336M76-032 | 4.00" | 17.00" | 0.037" | 0.025" | FR4 Epoxy Glass |
| M | 336M76-032C1 | 4.00" | 17.00" | 0.037" | 0.025" | FR4 Epoxy Glass, 1oz. unplated copper, 1 side |
| Q | 47Q78WE | 100mm (3.94") | 160mm (6.30") | 0.062" | 0.6mm (.025") | FR4 Epoxy Glass |
| T | 17T36WE | 3.00" | 6.00" | 0.062" | 0.067" | FR4 Epoxy Glass |
| X | 12X12WE | 12.00" | 12.00" | 0.062" | None | FR4 Epoxy Glass |
| X | 12X12WEC1 | 12.00" | 12.00" | 0.062" | None | FR4 Epoxy Glass, 1oz. unplated copper, 1 side |
| X | 12X12C1 | 12.00" | 12.00" | 0.062" | None | CEM-1 Epoxy Glass Composite, 1oz. unplated copper, 1 sides |
| X | 12X12C2 | 12.00" | 12.00" | 0.062" | None | CEM-1 Epoxy Glass Composite, 1oz. unplated copper, 2 sides |

Vectorbord®

