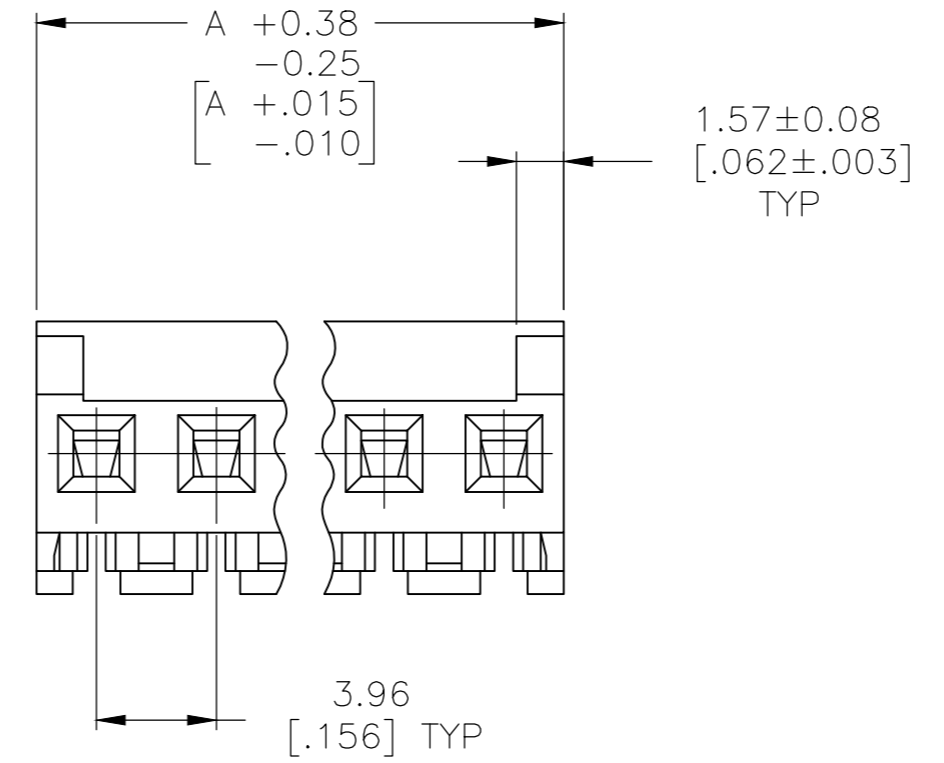
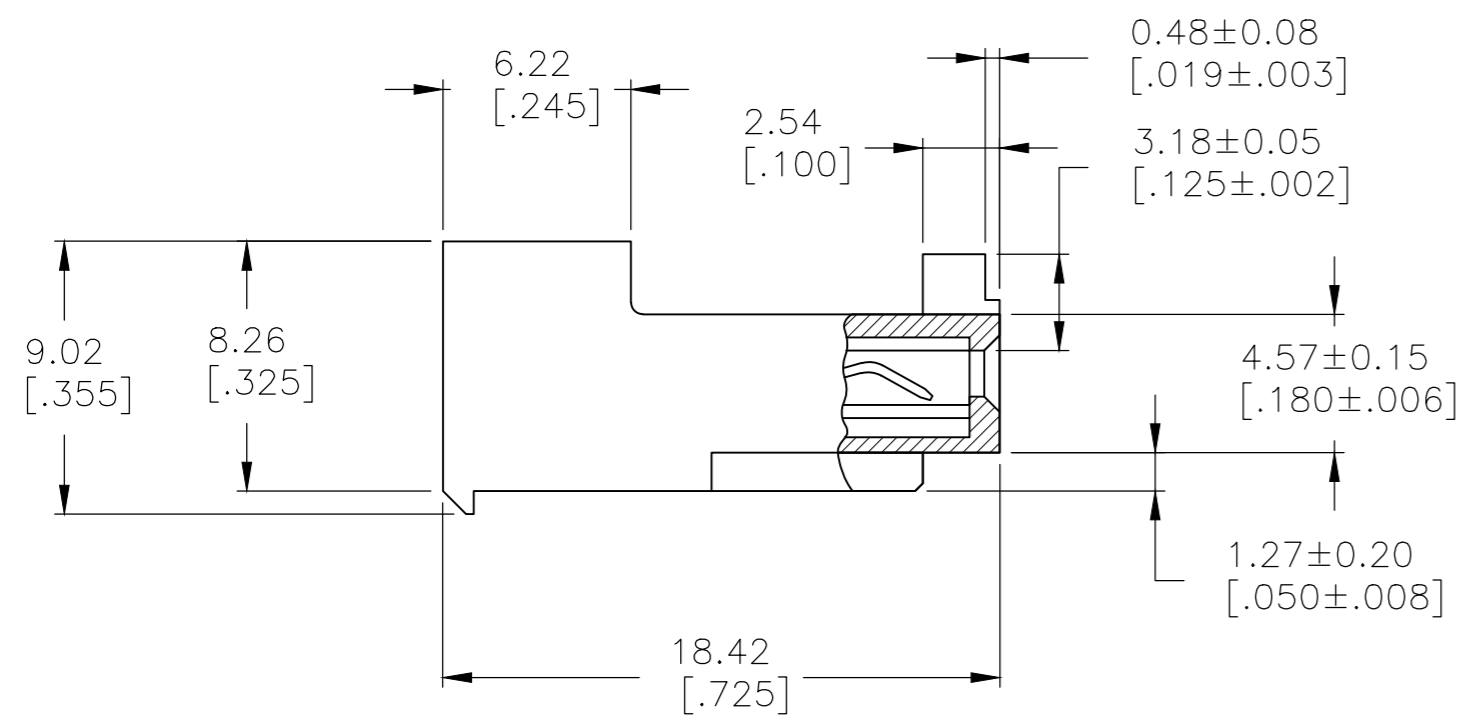
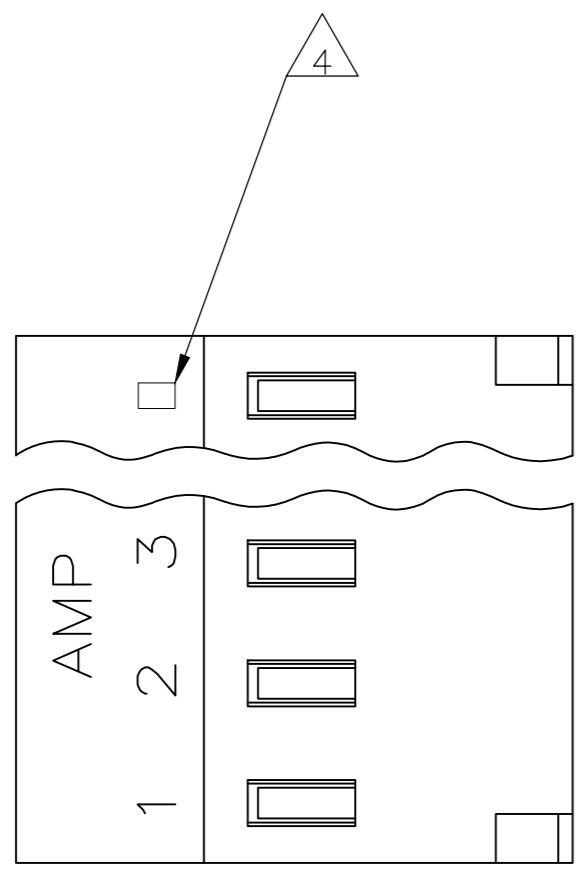


THIS DRAWING IS UNPUBLISHED. RELEASED FOR PUBLICATION  
 © COPYRIGHT - By - TE CONNECTIVITY ALL RIGHTS RESERVED.

| LOC |     | DIST        |                           | REVISIONS |           |      |    |
|-----|-----|-------------|---------------------------|-----------|-----------|------|----|
| P   | LTR | DESCRIPTION |                           | DATE      | DWN       | APVD |    |
| CM  | 54  | D2          | REVISED PER ECR-17-018282 |           | 08MAY2018 | BDA  | SG |

- 1 MATERIAL: CONNECTOR - NYLON UL94V-2 (ORANGE).  
 CONTACTS - 0.30 [.012] THICK COPPER ALLOY (BRIGHT-TIN LEAD 0.00203 [.000080] MIN THK FOR CONTACTS 644461-2 THRU 1-644461-4, MATTE WHISKER MITIGATED TIN 0.00203 [.000080] MIN THICK FOR CONTACTS 3-644461-2 THRU 4-644461-4)
- 2 CONTACTS ACCEPT 18 AWG WIRE WITH 2.41 [.095] MAX INSULATION DIAMETER.
- 3 CONTACTS MUST ACCEPT 1.14±0.03 [.045±.001] SQUARE POST AND REMAIN LOCKED IN POSITION.
- 4 IDENTIFICATION NUMBER FOR LAST CIRCUIT MAY NOT APPEAR ON ALL ASSEMBLIES.
- 5 DIMENSIONS IN BRACKETS ARE IN INCHES.
- 6 HOUSING FEATURES ARE: CLOSED END WITHOUT LOCKING RAMP AND WITH POLARIZING TAB.3
- 7 OBSOLETE PARTS: OBSOLETE CIS STREAMLINING PER D.RENAUD/D.SINISI
- 8 OBSOLETE PARTS



|              | DIM A         | NO. OF CIRCUITS | PART NO.   |
|--------------|---------------|-----------------|------------|
|              | 55.47 [2.184] | 14              | 4-644461-4 |
|              | 51.51 [2.028] | 13              | 4-644461-3 |
|              | 47.55 [1.872] | 12              | 4-644461-2 |
|              | 43.59 [1.716] | 11              | 4-644461-1 |
|              | 39.62 [1.560] | 10              | 4-644461-0 |
|              | 35.66 [1.404] | 9               | 3-644461-9 |
|              | 31.70 [1.248] | 8               | 3-644461-8 |
|              | 27.74 [1.092] | 7               | 3-644461-7 |
|              | 23.77 [.936]  | 6               | 3-644461-6 |
|              | 19.81 [.780]  | 5               | 3-644461-5 |
|              | 15.85 [.624]  | 4               | 3-644461-4 |
|              | 11.89 [.468]  | 3               | 3-644461-3 |
|              | 7.92 [.312]   | 2               | 3-644461-2 |
| 7 SUPERCEDED | 55.47 [2.184] | 14              | 1-644461-4 |
| 7 OBSOLETE   | 51.51 [2.028] | 13              | 1-644461-3 |
| 7 SUPERCEDED | 47.55 [1.872] | 12              | 1-644461-2 |
| 7 SUPERCEDED | 43.59 [1.716] | 11              | 1-644461-1 |
| 8 SUPERCEDED | 39.62 [1.560] | 10              | 1-644461-0 |
| 8 SUPERCEDED | 35.66 [1.404] | 9               | -644461-9- |
| 8 SUPERCEDED | 31.70 [1.248] | 8               | -644461-8- |
| 8 SUPERCEDED | 27.74 [1.092] | 7               | -644461-7- |
| 8 SUPERCEDED | 23.77 [.936]  | 6               | -644461-6- |
| 8 SUPERCEDED | 19.81 [.780]  | 5               | -644461-5- |
| 8 SUPERCEDED | 15.85 [.624]  | 4               | -644461-4- |
| 8 SUPERCEDED | 11.89 [.468]  | 3               | -644461-3- |
| 8 SUPERCEDED | 7.92 [.312]   | 2               | -644461-2- |

THIS DRAWING IS A CONTROLLED DOCUMENT.

DWN B. LEWIS 12FEB91  
 CHK R. SWING 12FEB91  
 APVD D.R. CLARK 20FEB91

TE Connectivity

MTA 156 CONNECTOR ASSEMBLY, 18 AWG, STANDARD

108-1051  
 114-1020

SIZE A2 CAGE CODE 00779 DRAWING NO. C-644461 RESTRICTED TO -

CUSTOMER DRAWING SCALE 4:1 SHEET 1 OF 1 REV D2