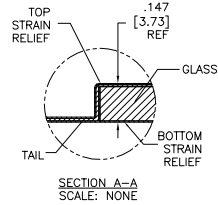
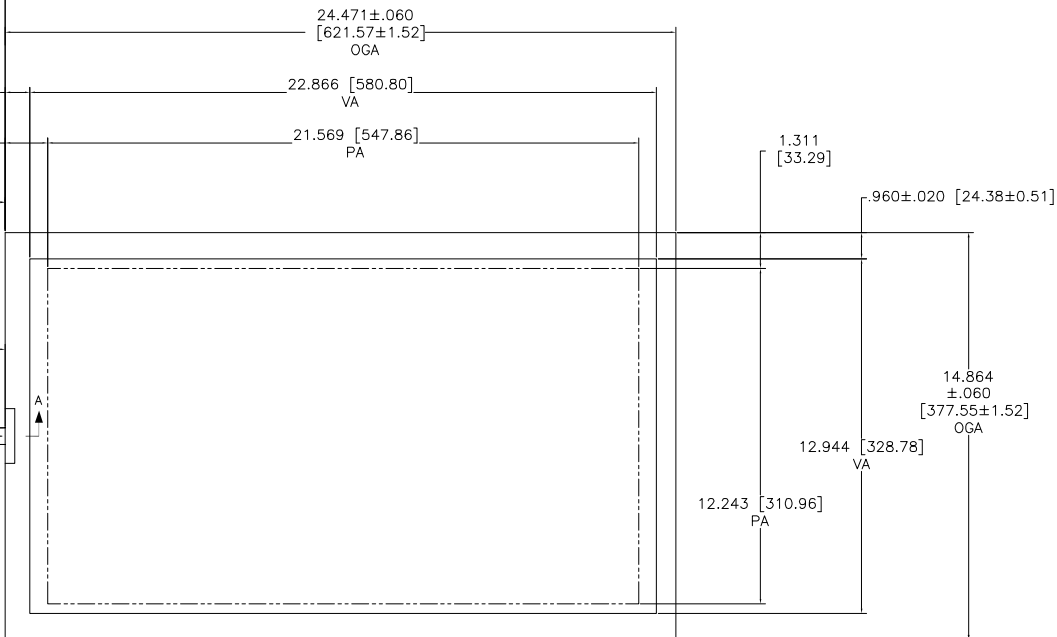
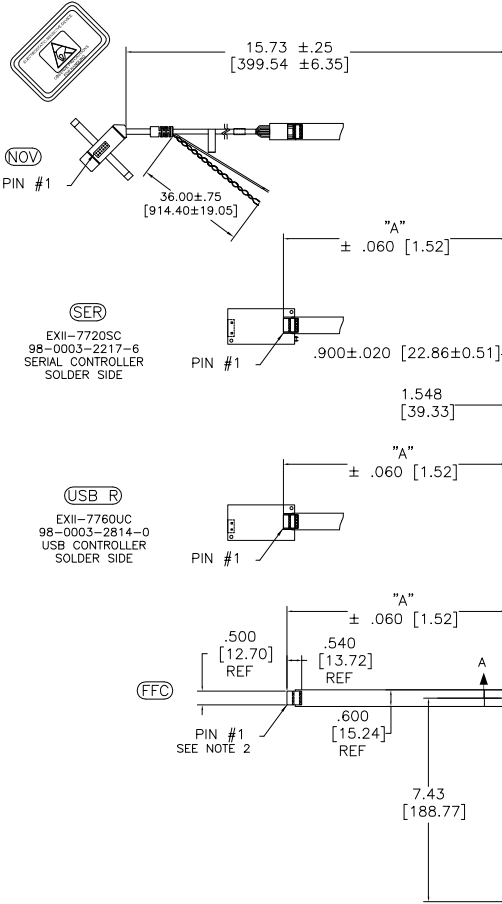


OGA DIAGONAL: 28.63 [727.24]
 VA DIAGONAL: 26.28 [667.40]
 PA DIAGONAL: 24.80 [629.95]

TOP LEVEL NUMBER	US NUMBER	TYPE	DIM "A" (TOTAL GLASS TO CONNECTOR)	A/G FINISH	PROD SPEC
17-8931-205	98-0003-2673-0	FFC	8.00" [203.20]	AG500	23655
17-8931-227	98-0003-2204-4	SER	8.00" [203.20]	AG500	23655
17-8931-206	98-0003-2674-8	NOV	SEE DWG	AG500	23655
17-8931-226	98-0003-3028-6	USB R	8.00" [203.20]	AG500	23655
N/A	98-0003-3647-3	USB R	8.00" [203.20]	WC100	34523
N/A	98-1100-0124-9	USB R FW9	8.00" [203.20]	AG500	23655
N/A	98-1100-0098-5	FFC	8.00" [203.20]	WC100	34523
N/A	98-1100-0107-4	USB R FW9	8.00" [203.20]	WC100	34523

ESD CLAMHELL CASE IS USED WITH ALL NOV, USB AND SER TERMINATIONS.



.147±.020 [3.73±.51]
 TOTAL THICKNESS OF GLASS, CABLE AND STRAIN RELIEF

.125 [3.18] REF

NOTES:

- WEIGHT OF GLASS IN GRAMS: 1788±10%
- NICOMATIC HOUSING P/N: OLOS
 NICOMATIC RECEPTACLES (PINS) MATTE TIN PLATED P/N: 14106-12
 HOUSING ORIENTED WITH LATCH DOWN

PINOUT	
1	LR
2	LL
3	SHLD
4	UL
5	UR

UNIT	INCHES [MM]
.X	±TOL
.XX	±.03 [-.76]
.XXX	±.015 [-.38]
ANGLES	±1°

		3M TROUBLE SHOOTING SYSTEMS WATSONVILLE, CA USA
<small>© COPYRIGHT 2006 3M COMPANY. ALL RIGHTS RESERVED. REPRODUCTION OF THIS DRAWING WITHOUT PERMISSION OF 3M COMPANY IS PROHIBITED. FOR OTHER THAN 3M PURPOSES.</small>		
DATE	MTD 5/23/06	REV
DO NOT SCALE DRAWING	SCALE 1 = 1	REV

J	REVISED PER CO 036265	4/13	SB
H	REVISED PER CO 036120	2/13	SB
REV	CHANGE NOTICE	DATE	BY
MARKETING DRAWING SCT32NN 26.28" W			
DATE	5/23/06	REV	1 OF 1
DO	AUTOCAD	REV	
DATE	TSD-31971	REV	J