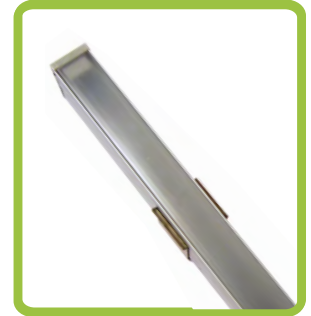


ALUMILINE[®] CHANNEL RAILS

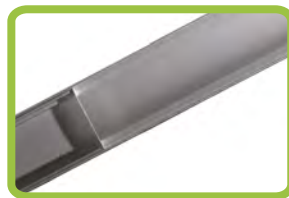
ZFC- series

Wide Variety of Profile Shapes & Diffuser Lenses:

ZFC-11WR-MULTI ZFC-20BP-MULTI
 ZRC-17-PC-MULTI ZFC-21-MULTI
 ZFC-18C-PC-MULTI



ZFC-17 SERIES
Milk White Lens



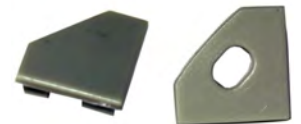
ZFC-17 SERIES
Semi-Clear Lens



ZFC-17 SERIES - SIDE VIEW



ZFC-18C SERIES - CORNER MOUNT



ZFC-18C END CAPS

APPLICATIONS

- CABINETS
- VANITY MIRROR
- DISPLAY CASE
- STAIRWAYS & RAILINGS
- WINE RACKS
- CLOSETS
- RETAIL SPACE
- BOOKSHELVES
- KICKBOARDS
- WORK BENCHES

The JKL Alumiline[®] Channel Rails can be used anywhere a continuous band of light would be wanted without the appearance of hotspots. The JKL Alumiline[®] Channel Rails add a professional look to the application of LED lighting with different types of diffusers and lens covers.

Lighting hand rails, closets, stairs, tables and undercabinets can be completed quickly with a refined appearance using the Alumiline[®] Channel Rails. A variety of lengths are available and JKL Components also offers custom lengths to meet your project needs.



ZFC- SERIES

ASSEMBLY

- 1) Clean the inside surface of rail to remove any grease or dirt.
- 2) Peel protective paper off of the flex ribbon. Make sure you remove the paper but not the double-sided adhesive.
- 3) Place the start of the flex ribbon 1/4 inch (6 mm) away from the inside edge of the Alumiline[®] rail. Additional space may be needed to accommodate your connection method (wires or solderless connectors).
- 4) Slowly peel the paper off the ribbon and press the ribbon into the inside surface of the rail.
- 5) With the flex ribbon attached to the rail, place the end caps onto the ends of the rail. The end cap with the hole should be placed where the wires will come out.
- 6) The diffused/lens cover can be snapped onto the rail by catching one side of the lens cover on the rail and pushing down-and-in towards the rail on the other side.

STEP 2



STEP 3 + 4



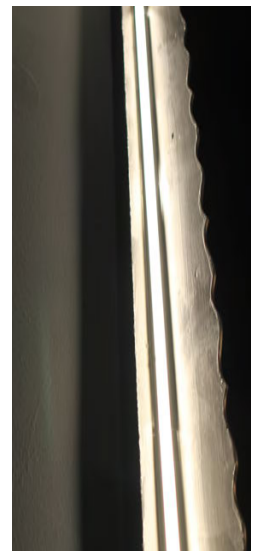
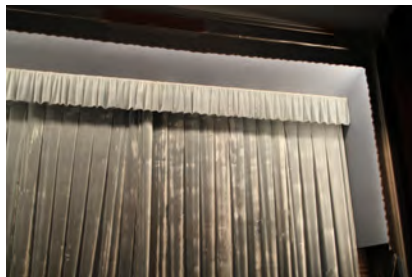
STEP 5 + 6



MOUNTING

HOW TO MOUNT

- 7) Mark the location of where the Alumiline[®] rail with flex LED will be mounted, making sure there is enough space for wiring and that the wires are long enough to reach the next component.
- 8) Mark two spots 1/3 of the way in from each rail end. Using a number 6 screw, anchor a mounting clip at each spot.
- 9) Snap the Alumiline[®] rail (with your LED ribbon mounted inside) into the clips. Center the rail on the clips and proceed with the electrical connections.



CONNECTING UP THE POWER SUPPLIES, DIMMERS AND CONTROLS

Power up the ribbons as needed.

See [JKL-AS-ZFS-LED-FLEX.pdf](#) for more specific information on the use of LED flex ribbons, connectors, joiner cables and electrical connection tips.