

## Han 1A-CP-Lever/Latch-female insert-V2

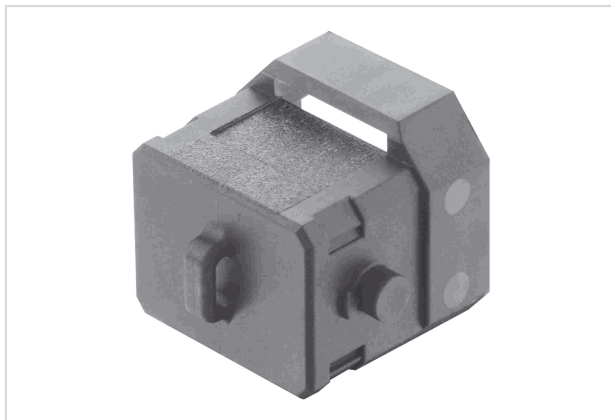


Image is for illustration purposes only. Please refer to product description.

Part number	09 10 000 5502
Specification	Han 1A-CP-Lever/Latch-female insert-V2
HARTING eCatalogue	<a href="https://b2b.harting.com/09100005502">https://b2b.harting.com/09100005502</a>

### Identification

Category	Accessories
Series	Han® 1A
Type of accessory	Protection cover
Description of the accessory	for female inserts
	09 10 004 310X
	09 10 008 310X
	09 10 003 270X

### Version

Size	1 A
------	-----

### Technical characteristics

Limiting temperature	-30 ... +90 °C
Degree of protection acc. to IEC 60529	IP65

### Material properties

Material (cover)	Polyamide (PA)
Colour (accessories)	RAL 9005 (jet black)
Material flammability class acc. to UL 94	V-0
RoHS	compliant
ELV status	compliant
China RoHS	e
REACH Annex XVII substances	Not contained



**Pushing Performance**  
Since 1945

## Material properties

REACH ANNEX XIV substances Not contained

REACH SVHC substances Not contained

## Commercial data

Packaging size 10

Country of origin Romania

European customs tariff number 85389099

GTIN 5713140191860

eCl@ss 27440208 Cap for industrial connectors