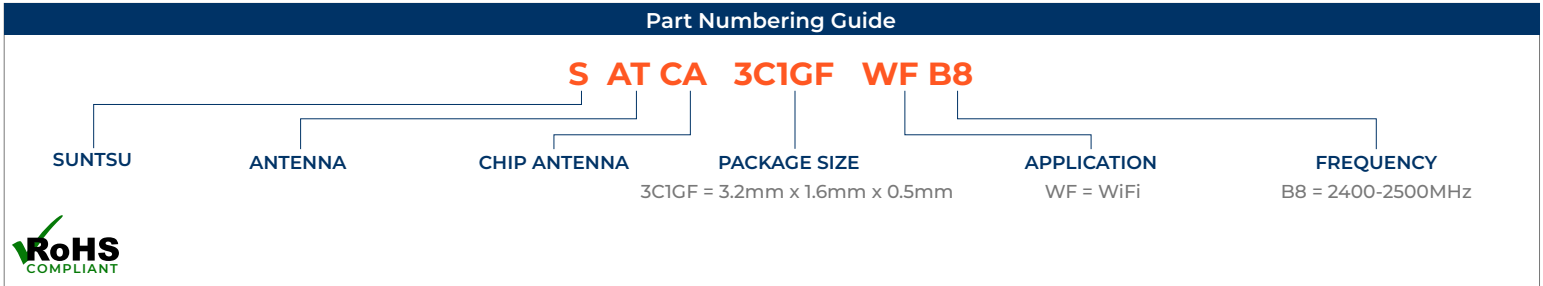
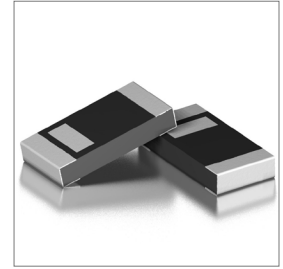
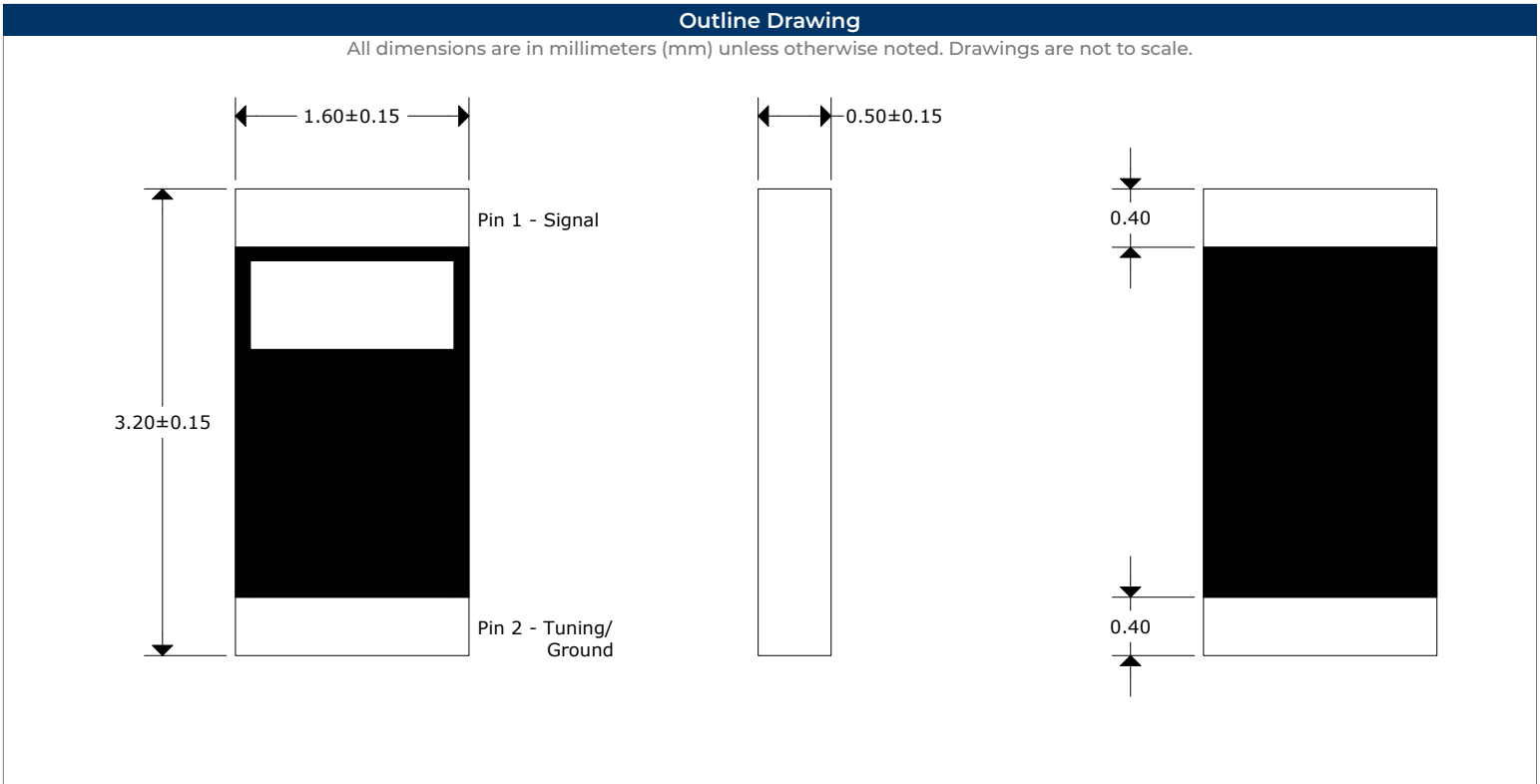


Features
<ul style="list-style-type: none"> WiFi/ZigBee/Bluetooth Chip Type Stable And Reliable Performance 2400-2500MHz SMT Process Compatible

Applications
<ul style="list-style-type: none"> ISM 2.4 GHz Applications ZigBee/BLE Applications Bluetooth Earphone Systems Smart Hand Held Devices Wireless PCMCIA Cards or USB Dongles

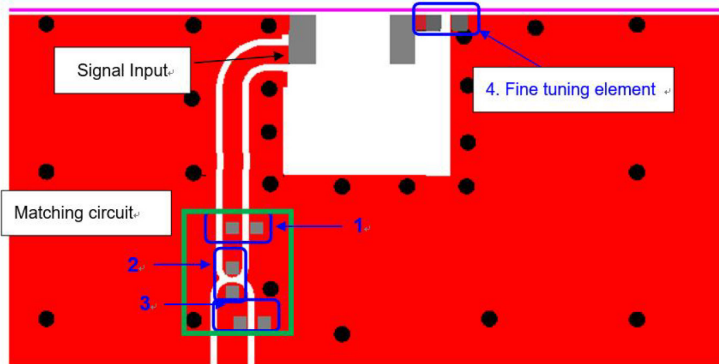
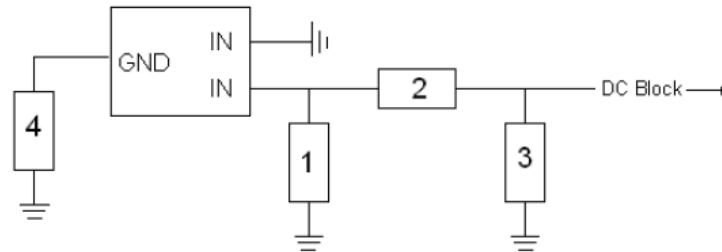
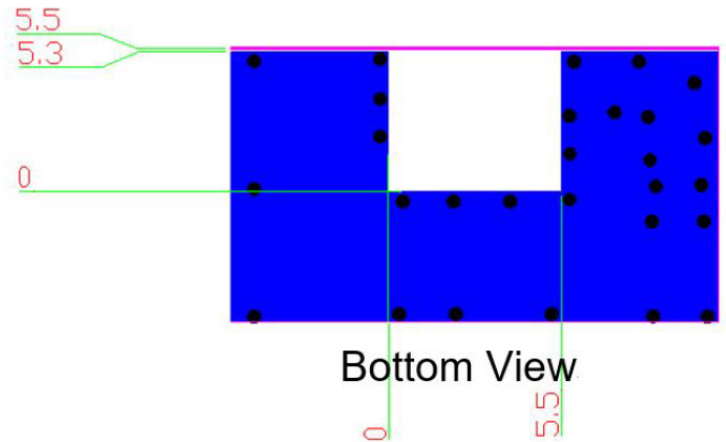
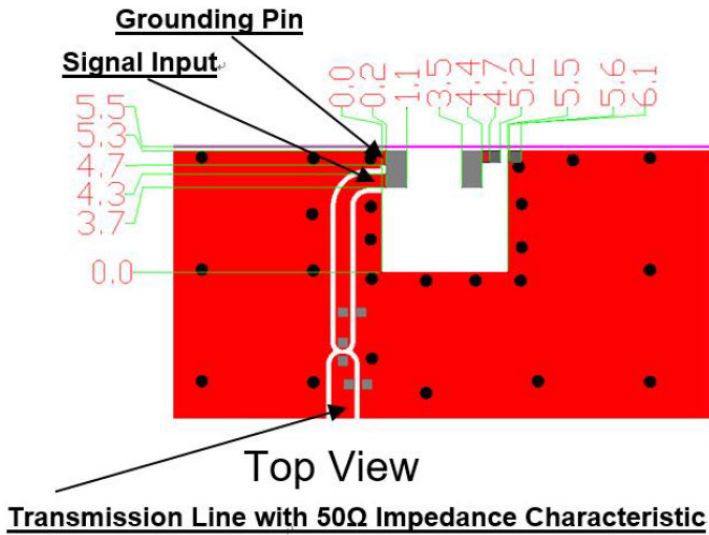


Electrical Parameters	Units	Minimum	Typical	Maximum	Remarks
Frequency Band	MHz	2400		2500	
Impedance	Ω		50		
Polarization			Linear		
Peak Gain	dBi		2.5		At 2442MHz
Efficiency	%		84		At 2442MHz
VSWR				2	At Center Frequency
Operating Temperature	C	-40		85	



Recommended Land Pattern & Frequency Tuning Scenario Circuit

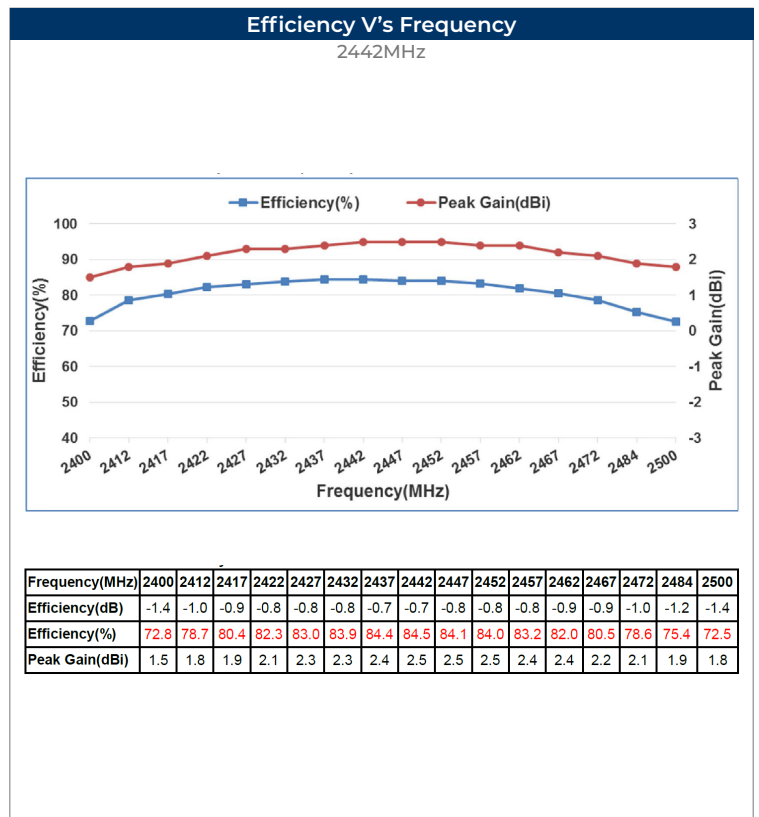
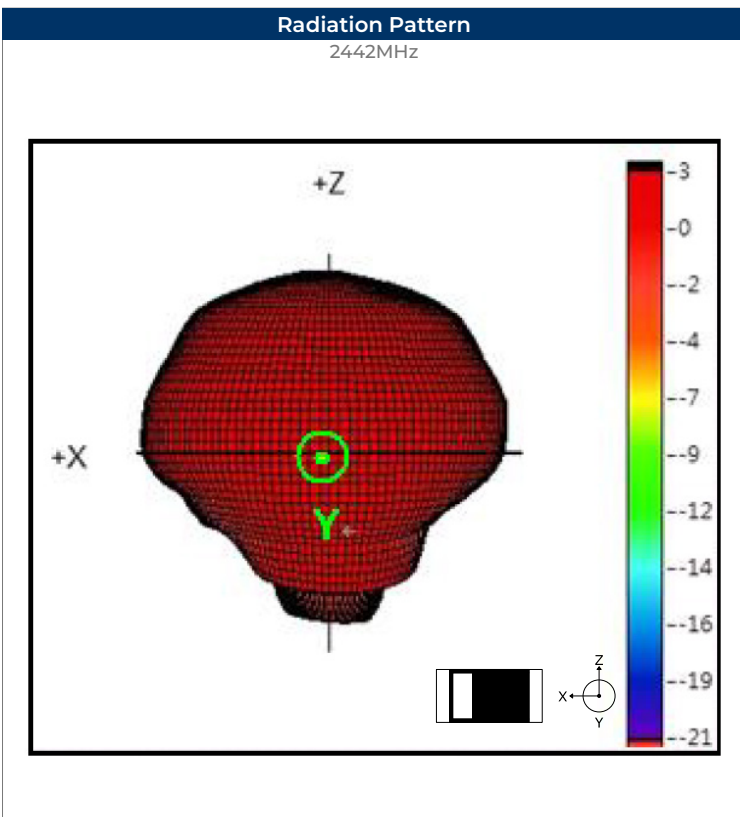
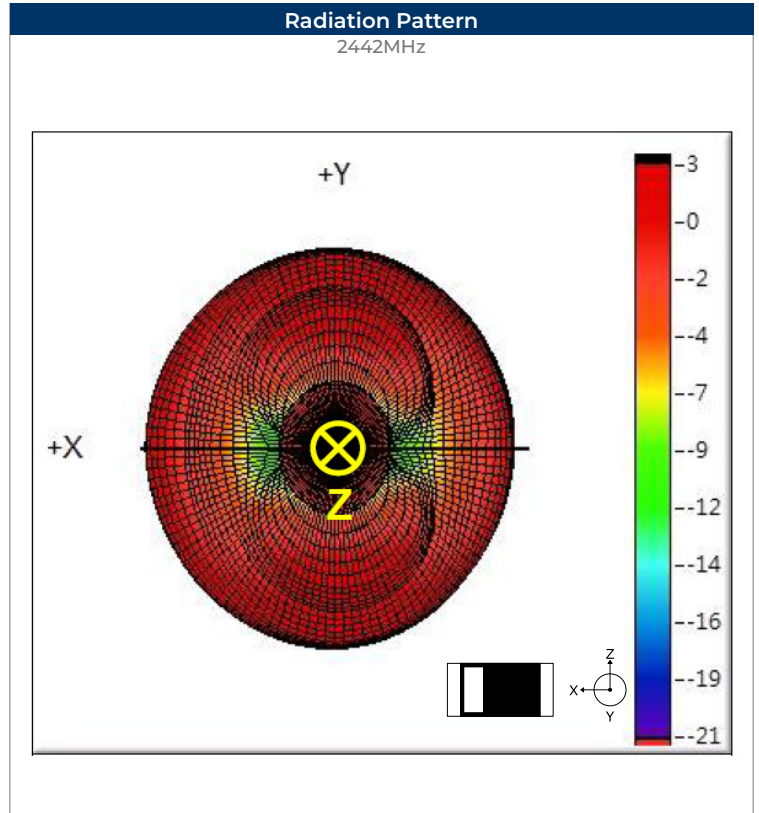
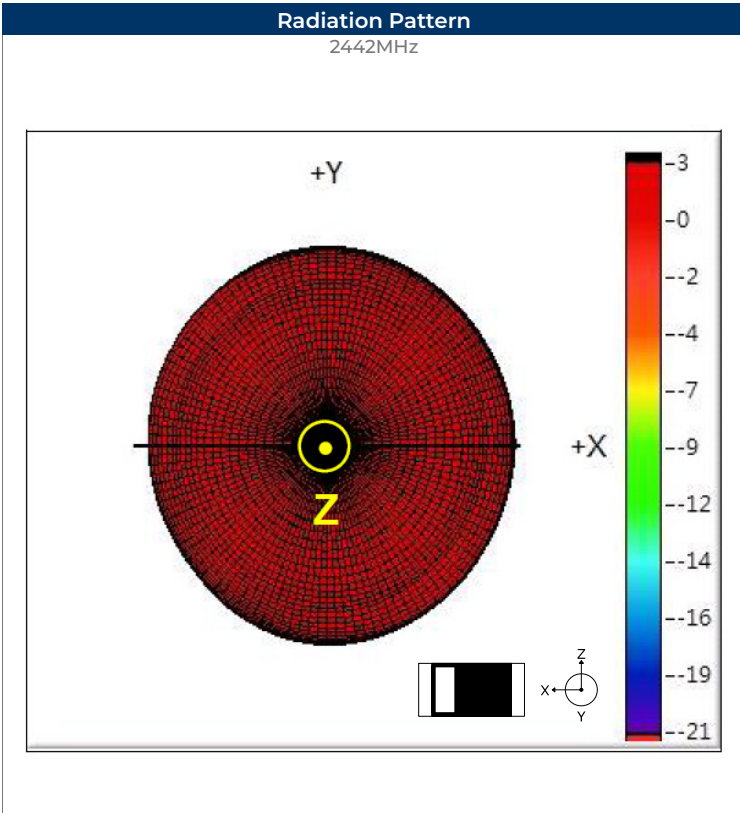
All dimensions are in millimeters (mm) unless otherwise noted. Drawings are not to scale.



System Matching Circuit Components			
Location	Description	Vendor	Tolerance
1	1.2pF	DARFON (0402)	±0.1pF
2	3.3nH	DARFON (0402)	±0.1nH
3	N/A	-	-
4	Fine Tuning Element	DARFON (0402)	±0.1pF

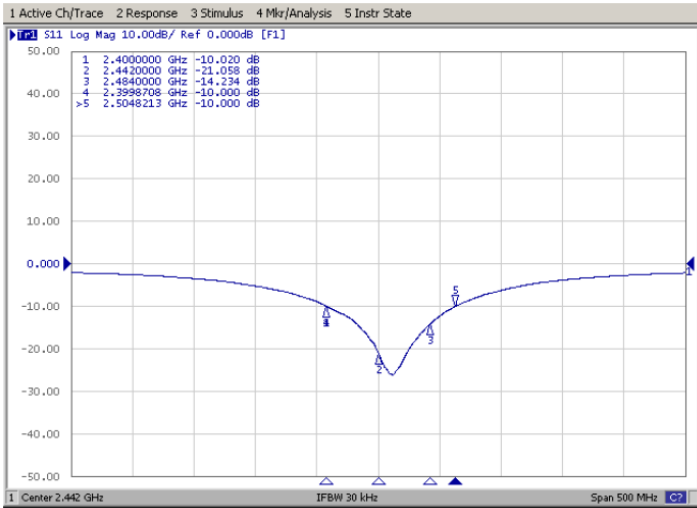
For these suggested values for the matching and tuning of components the center frequency will be 2442MHz on a standard 80 x 40mm² Evaluation board.

Please note, these are reference values which may need to be changed when different circuit boards or manufactures are used.



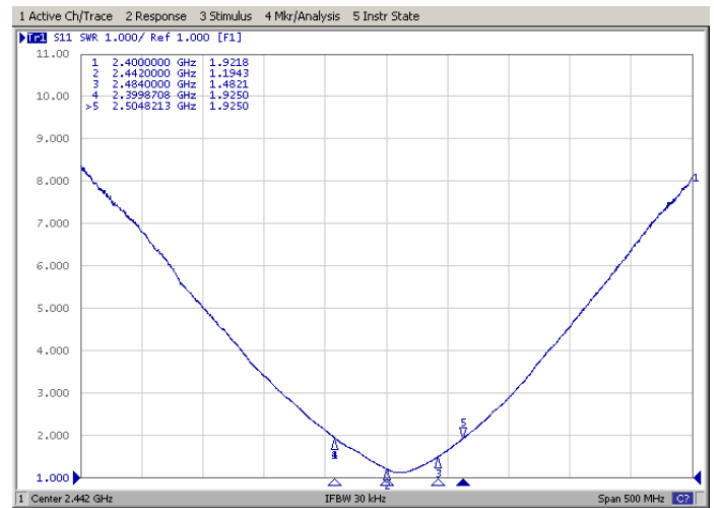
Electrical Test

Return Loss



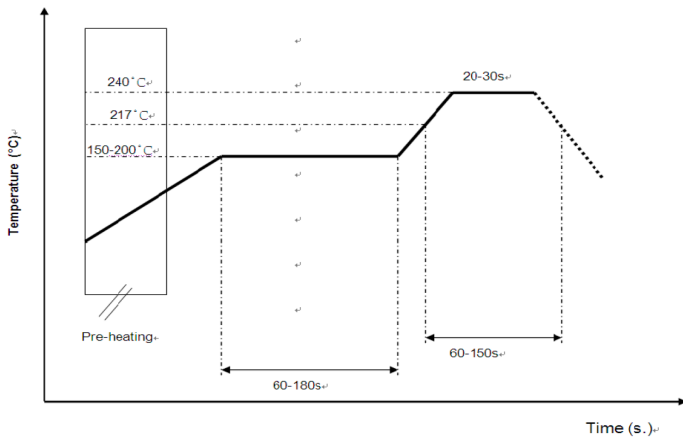
Electrical Test

VSWR



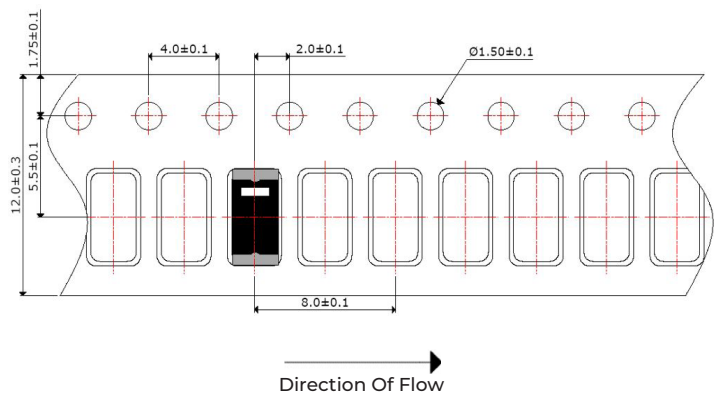
Soldering Conditions

Typical Soldering Profile For Lead-Free Process



Packaging - Tape And Reel

5000Pcs / Reel



Environmental & Mechanical Specifications

High Temperature Test	85°C for 500 hours, and then to normal temperature/humidity for 24hours.
Low Temperature Test	-30°C for 500 hours, and then to normal temperature/humidity for 24hours.
Humidity Test	85°C / 90-95%RH for 96 hours, and then to normal temperature/humidity for 24hours.
Thermal Shock Test	-30°C for 30 min and +85°C for 30 min. 5 cycles, then expose to normal temperature/humidity for 24 hours or more.
Vibration Test	5 to 200 to 5Hz, swept in 10min, 4.5G at max(2mm amplitude), in X and Y directions for 2 hours each and in Z direction for 4 hours.