



GET TIPPING WITH THE

# TIPPER TRAILER ADD-ON

For :MOVE mini Mk2



# NOTES

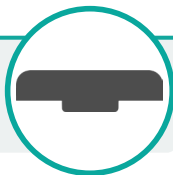
This kit is compatible with all versions of :MOVE mini but this booklet has been designed for **:MOVE mini Mk2**. If you have the **original :MOVE mini**, visit [kitronik.co.uk/5670](http://kitronik.co.uk/5670) for instructions.

## BUILD INSTRUCTIONS

### DISASSEMBLY

1

Remove the ':MOVE' panel and Servo:Lite board from your :MOVE mini. Put these aside, you will need them again later.



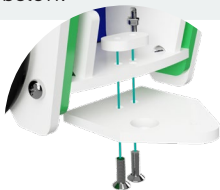
**NOTE:** If not done already, the Servo:Lite board will need to be converted for use of three servos with the pin header provided. Visit [kitronik.co.uk/3servo](http://kitronik.co.uk/3servo) for the online guide.

### TOW PANEL

2

Install the Tow Panel at the rear of :MOVE mini using the screws shown below.

M3 x 10mm

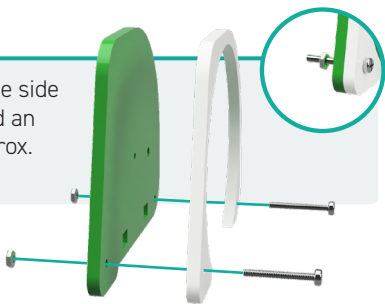


### TRAILER SIDE

3

Push the screws through the side panels as shown and thread an M2 nut onto the end by approx. 3mm.

M2 x 16mm

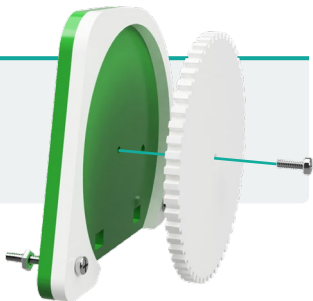


### ADD WHEELS

4

Use an M2 x 6mm screw to attach the wheel as shown, making sure to leave the screw a little loose, allowing the wheel to spin freely.

M2 x 6mm

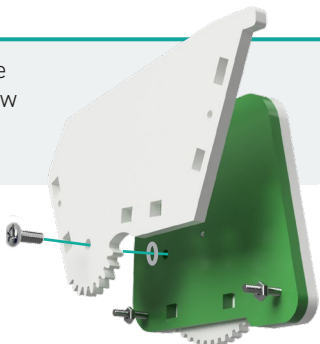


### BUCKET SIDE

5

Add one of the bucket sides to the assembly using a M3 x 6mm screw and a washer. The washer fits in between the two panels.

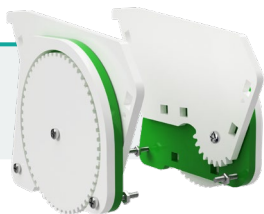
M3 x 6mm



6

## REPEAT

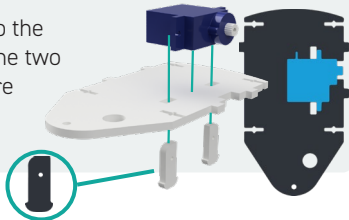
Repeat steps 3-5 for the opposite side, making sure components are in reverse order. Then set these aside.



7

## ADD SERVO

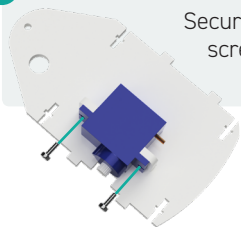
Take the base plate and line up the servo as shown. Then slot in the two mounting brackets making sure the flat edges are facing in towards the servo.



8

## SECURE SERVO

Secure the servo into place with the M2 x 6mm screws: these should pass through the servo first and then thread into the acrylic.



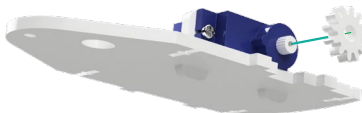
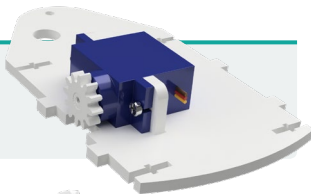
M2 x 6mm



9

## GEAR MECHANISM

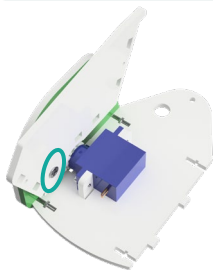
Press the servo gear onto the servo to fit firmly in place and gently rotate fully clockwise.



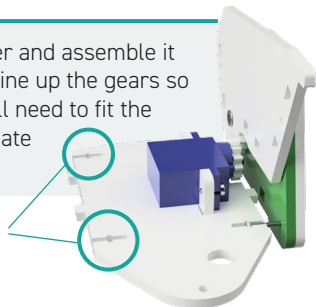
## ADD LEFT SIDE

10

Take the left side panel made earlier and assemble it onto the base plate, taking care to line up the gears so that the tipper is horizontal. You will need to fit the nuts into the T-joints on the base plate and tighten.



T-Joints



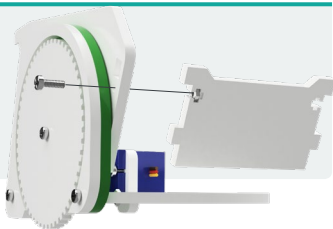
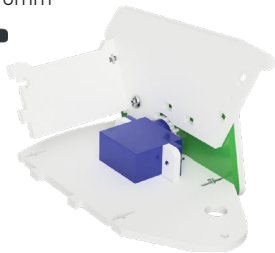
**NOTE:** Before you continue, gently rotate the bucket side to make sure it moves correctly. If not, try loosening the screw shown to the left.

## REAR BUCKET

11

Slot the rear panel of the tipper bucket into the trailer side as shown and secure using an M2 x 6mm screw and M2 nut.

M2 x 6mm

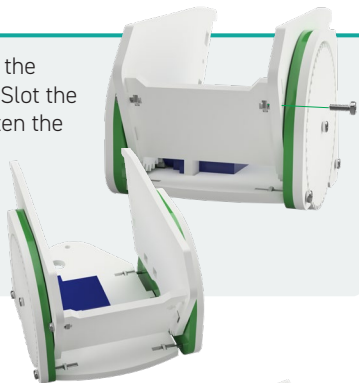


**NOTE:** If you're having trouble, try using a piece of tape to hold the nut in place whilst you screw it together.

## ADD RIGHT SIDE

12

Add the second side panel on the opposite side, like in Step 10. Slot the rear bucket panel in and tighten the screws in the base. Finally insert the second M2 x 6mm screw into the rear panel and secure with another M2 nut.



M2 x 6mm



## ASSEMBLE REST OF BUCKET

13

Rotate the tipper backwards and slot the base panel of the tipper bucket into place, followed by the front panel.

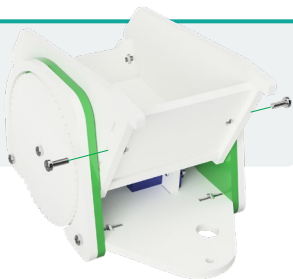


**NOTE:** The front panel will only fit in one way.

## FINAL BUCKET SCREWS

14

Install the two remaining M2 x 6mm screws at the front of the tipper and secure in place with the M2 nuts.



M2 x 6mm

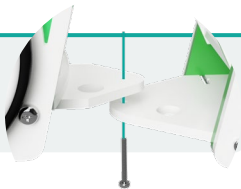


## TOW BAR

15

Screw an M2 x 16mm through the Tipper trailer and into the Tow Plate attached to :MOVE mini.

M2 x 16mm



## RECONNECT SERVOS

16

Thread the servo wires under the bucket and through the holes in the base panel, then up through the tow panel. Reconnect the servo wires into the Servo:lite board, and slot it back into :MOVE mini. Finally clip the :MOVE panel back in the front and tuck the excess wires away.



**NOTE:** With the back of the board facing you - the third servo attaches to uppermost, right, set of pins.

## GET CODING!

17

Visit [kitronik.co.uk/5670](http://kitronik.co.uk/5670) for help.




## TOOLS REQUIRED

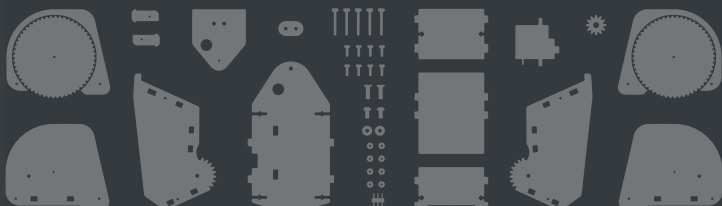
Small Phillips Screwdriver  
Soldering Iron  
Knife

## STOCK CODE

5670

 This accessory requires modification to the Servo:Lite board and disables the on board ZIP LEDs. Visit [kitronik.co.uk/3servo](http://kitronik.co.uk/3servo) for the online guide.

## CONTENTS




 **WARNING:** Contents may inspire creativity

T: 0845 8380781

W: [www.kitronik.co.uk](http://www.kitronik.co.uk)

E: [support@kitronik.co.uk](mailto:support@kitronik.co.uk)



Designed & manufactured  
in the UK by 



[kitronik.co.uk/twitter](https://twitter.com/kitronik)



[kitronik.co.uk/facebook](https://www.facebook.com/kitronik)



[kitronik.co.uk/youtube](https://www.youtube.com/kitronik)



[kitronik.co.uk/instagram](https://www.instagram.com/kitronik)



For more information on RoHs and CE please visit [kitronik.co.uk/rohs-ce](http://kitronik.co.uk/rohs-ce). Children assembling this product should be supervised by a competent adult. The product contains small parts so should be kept out of reach of children under 3 years old.