



Fish-eye Joint M4 (4-Pack)

SKU: 89025 Weight: 12.00 Gram

What Is Fish-eye Joint M4?

Fish-eye Joint is frequently-used mechanical part of Makeblock platform which can rotate 360 degrees freely. The M4 hole on this joint allows you to connect with other Makeblock parts easily.

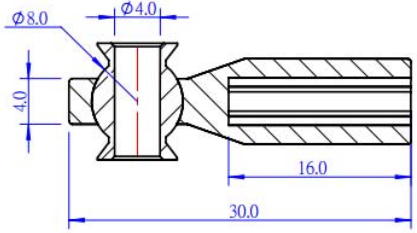
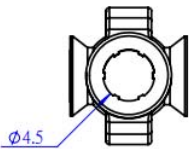
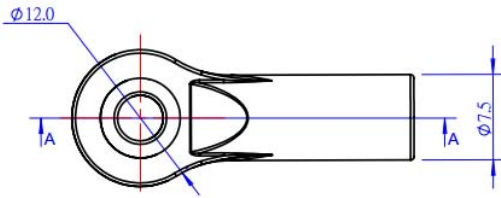
Feature

- ? Made from nylon and brass;
- ? Comes with a M4 hole, compatible with all Makeblock parts;
- ? High wear resistance, light-weight;
- ? Easy to assemble and disassemble;

Demo



Size Chart (mm):



Specifications

| | |
|--|----------------------------|
| SKU | 89025 |
| Product Name | Fish-eye Joint M4 (4-Pack) |
| Net Weight | 12g (0.42oz) |
| Package Content (Quantity x Part Name) | 4 x Fish-eye Joint M4 |





<https://store.makeblock.com/fish-eye-joint-m4-4-pack/2-6-19>