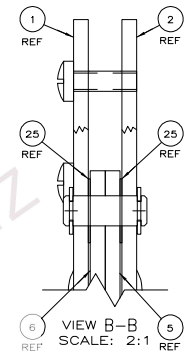
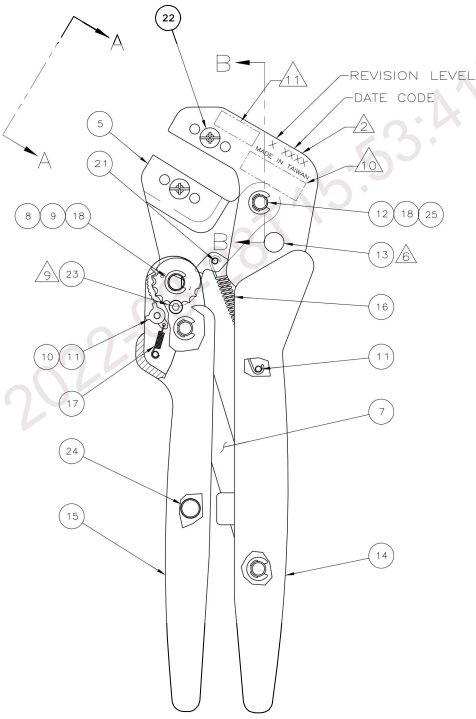
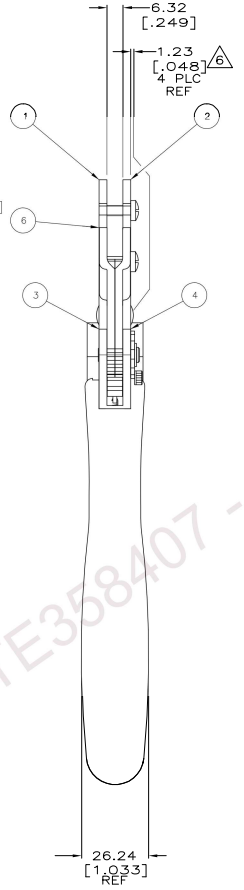
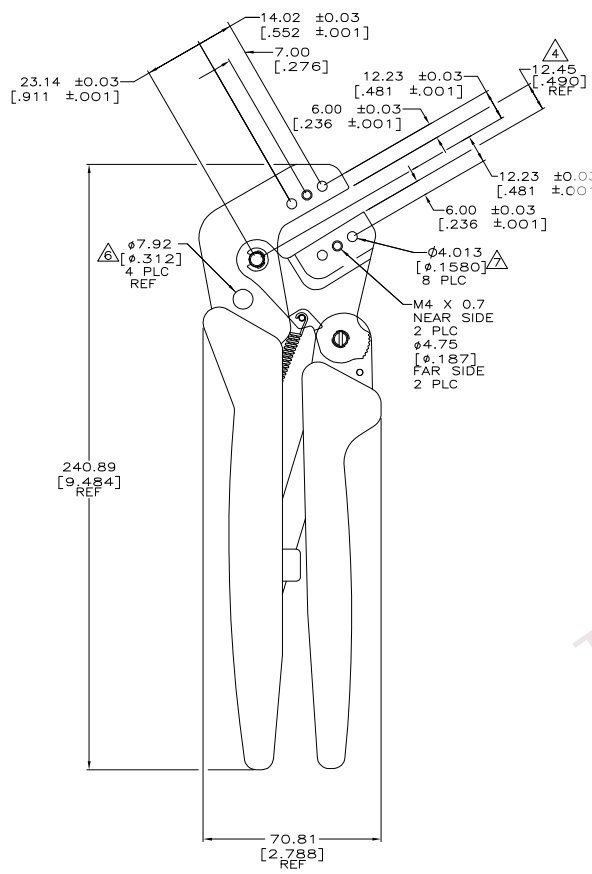
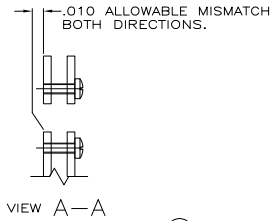
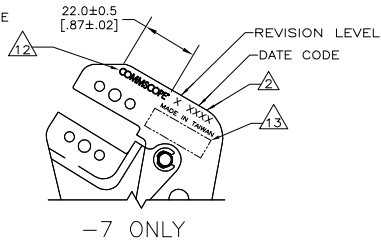


THIS DRAWING IS A CONTROLLED DOCUMENT.

PART NUMBER	REV	FIRST USED	REMARKS
354940-1	L	-	RIGHT-HANDED FRAME TWO TONE GRIPS
354940-2	L	-	RIGHT-HANDED FRAME TWO TONE GRIPS
354940-3	F	-	LEFT-HANDED FRAME
354940-4	F	-	LEFT-HANDED FRAME
354940-5	K	91359	RIGHT-HANDED FRAME (BLACK)
354940-6	L	-	NO GRIPS, LOGO OR PN
354940-7	L	-	COMMSCOPE FRAME

OBsolete
OBsolete
SUPSD BY 354940-2
RESTRICTED TO COMMSCOPE



- RECOMMENDED SPARE PARTS: NONE.
- IDENTIFY REVISION LEVEL, DATE CODE, AND "MADE IN TAIWAN" PER TEC-115-67-2 IN APPROXIMATE AREA SHOWN.
- LUBRICATE PIVOT PINS WITH LIGHT GRADE MACHINE OIL.
- DIMENSION WHEN ITEMS 5 AND 6 ARE PARALLEL TO ITEMS 1 AND 2.
- ALL DIMENSIONS ARE FOR REFERENCE ONLY.
- RIVET ON BOTH SIDES.
- 4.013 [.1580] DIA HOLES MUST ACCEPT A [.1570] DIA GAGE PIN THROUGH BOTH SIDES SIMULTANEOUSLY.
- TOOL RATCHET MECHANISM MUST RELEASE AND TOOL MUST RETURN TO OPEN POSITION WITH DIES INSTALLED.
- SET ITEM 9 SO THE #4 SLOT ALIGNS WITH ITEM 23.
- LASER MARK FOR -1 AND -2 ONLY 3.0 (.12) HIGH CHARACTERS
354940-1
FRAME ONLY
- APPLY TE CONNECTIVITY LOGO PER 1-1621434-0 ON -1 AND -2 FRAMES.
- APPLY COMMSCOPE LOGO PER "COMMSCOPE AM030H1405" VERSION B; ALL TEXT LOGO AS SHOWN ON -7 FRAME..
- LASER MARK FOR -7 ONLY 3.0 (.12) HIGH CHARACTERS
354940-7
FRAME ONLY
- ALTERNATE PN 2389223-1

QTY	REV	DESCRIPTION	ITEM NO							
2	2	301185-1	SPACER, SHIM, .0030 THK	25						
1	1	21029-1	PIN, SLOTTED, SPRING	24						
1	1	7-18023-7	SCREW, M3 X 4	23						
-	2	986964-2	SCREW, M4 X 12	22						
1	1	986961-1	PIN, SPIRAL, M2.5 X 5	21						
-	-	1583630-2	GRIP, HANDLE, BLACK	20						
-	-	1583631-2	GRIP, FRAME, BLACK	19						
7	7	986963-2	RING, RETAINING, 6 mm	18						
1	1	354968-1	SPRING, EXTENSION	17						
1	1	354969-1	SPRING, EXTENSION	16						
1	-	2161297-1	GRIP, HANDLE	15						
1	-	2161296-1	GRIP, FRAME	14						
1	1	768786-1	SPACER	13						
3	3	354924-1	PIN, PIVOT	12						
3	3	679830-1	PIN, GROOVED	11						
1	1	354928-1	PAWL	10						
1	1	354931-1	ADJUSTER, ECCENTRIC	9						
1	1	354926-1	ECCENTRIC	8						
2	2	1583647-1	LINK	7						
1	1	1583650-1	JAW, LEFT	6						
1	1	1583649-1	JAW, RIGHT	5						
1	1	1583648-1	LEVER, RIGHT	4						
1	1	1583648-2	LEVER, LEFT	3						
1	1	1583652-2	FRAME, RIGHT	2						
1	1	1583652-1	FRAME, LEFT	1						
-7	-6	-5	-4	-3	-2	-1	U/M	PART NO	DESCRIPTION	ITEM NO

DIMENSIONS: INCHES
 DIMENSIONS: MILLIMETERS
 DIMENSIONS: DECIMALS
 DIMENSIONS: FRACTIONS
 DIMENSIONS: ANGLES
 DIMENSIONS: SURFACE TEXTURE
 DIMENSIONS: TOLERANCES
 DIMENSIONS: UNITS
 DIMENSIONS: SCALE
 DIMENSIONS: SHEET
 DIMENSIONS: DATE
 DIMENSIONS: DRAWING NO
 DIMENSIONS: SHEET 1 OF 1
 DIMENSIONS: REV L4
 DIMENSIONS: 354940
 DIMENSIONS: PRO-CRIMPER III ASSEMBLY
 DIMENSIONS: M. MORRIS
 DIMENSIONS: T. BOZEK
 DIMENSIONS: W. FEIBER
 DIMENSIONS: 04/02/93
 DIMENSIONS: 5-3-93
 DIMENSIONS: 5-3-93
 DIMENSIONS: 1:1
 DIMENSIONS: A1
 DIMENSIONS: 354940
 DIMENSIONS: SHEET 1 OF 1
 DIMENSIONS: REV L4