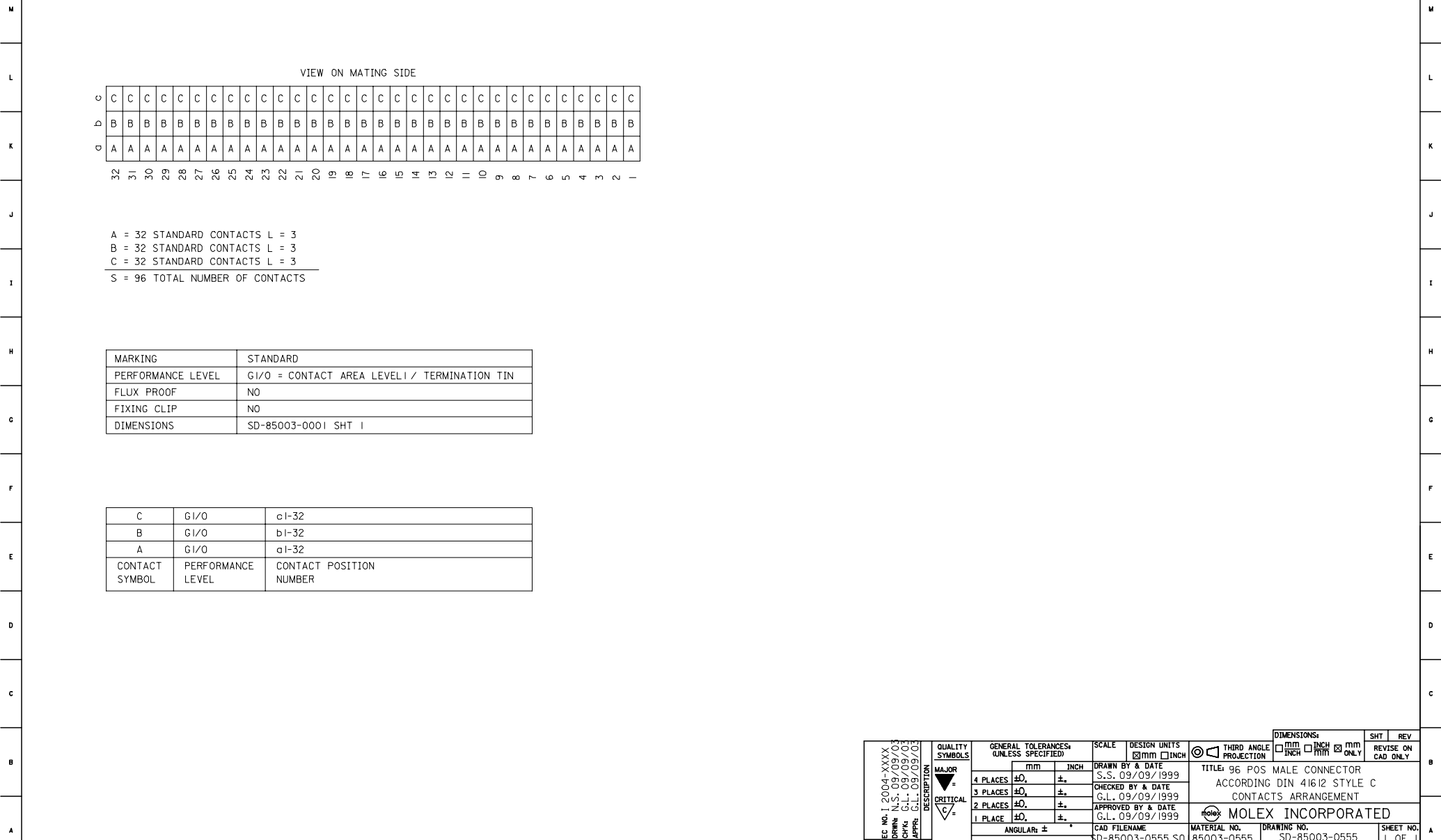


20 19 18 17 16 15 14 13 12 11 9 8 7 6 5 4 3 2 1



VIEW ON MATING SIDE

G	C	C	C	C	C	C	C	C	C	C	C	C	C	C	C	C	C	C	C	C	C	C	C	C	C	C	C	C	C	C	C	C	C	C	C	C		
D	B	B	B	B	B	B	B	B	B	B	B	B	B	B	B	B	B	B	B	B	B	B	B	B	B	B	B	B	B	B	B	B	B	B	B	B	B	B
O	A	A	A	A	A	A	A	A	A	A	A	A	A	A	A	A	A	A	A	A	A	A	A	A	A	A	A	A	A	A	A	A	A	A	A	A	A	
	32	31	30	29	28	27	26	25	24	23	22	21	20	19	18	17	16	15	14	13	12	11	10	9	8	7	6	5	4	3	2	-						

A = 32 STANDARD CONTACTS L = 3
 B = 32 STANDARD CONTACTS L = 3
 C = 32 STANDARD CONTACTS L = 3
 S = 96 TOTAL NUMBER OF CONTACTS

MARKING	STANDARD
PERFORMANCE LEVEL	GI/O = CONTACT AREA LEVEL I / TERMINATION TIN
FLUX PROOF	NO
FIXING CLIP	NO
DIMENSIONS	SD-85003-0001 SHT 1

C	GI/O	cI-32
B	GI/O	bI-32
A	GI/O	aI-32
CONTACT SYMBOL	PERFORMANCE LEVEL	CONTACT POSITION NUMBER

24-border.DGN REV 4 19 18 17 16 15 14 13 12 11 10 9 8 7 6 5 4 3 2 1 96/06/12 LEVEL 6

EC NO. I 2004-XXXX DRAWN N.S. 09/09/03 CHK'd G.L. 09/09/03 APPR'd G.L. 09/09/03	QUALITY SYMBOLS MAJOR ∇ CRITICAL ∇	GENERAL TOLERANCES: (UNLESS SPECIFIED): 4 PLACES ± 0.1 mm \pm INCH 3 PLACES ± 0.15 mm \pm INCH 2 PLACES ± 0.2 mm \pm INCH 1 PLACE ± 0.3 mm \pm INCH	SCALE <input checked="" type="checkbox"/> MM <input type="checkbox"/> INCH DESIGN UNITS <input checked="" type="checkbox"/> MM <input type="checkbox"/> INCH	THIRD ANGLE PROJECTION <input checked="" type="checkbox"/> FIRST ANGLE PROJECTION	DIMENSIONS: <input type="checkbox"/> MM <input type="checkbox"/> INCH <input checked="" type="checkbox"/> MM ONLY <input type="checkbox"/> INCH ONLY	SHT 1 REV 1 REVISE ON CAD ONLY	
	DRAWN BY & DATE S.S. 09/09/1999	CHECKED BY & DATE G.L. 09/09/1999	APPROVED BY & DATE G.L. 09/09/1999	TITLE: 96 POS MALE CONNECTOR ACCORDING DIN 41612 STYLE C CONTACTS ARRANGEMENT			
	CAD FILENAME SD-85003-0555.S0	MATERIAL NO. 85003-0555	DRAWING NO. SD-85003-0555	MOLEX INCORPORATED			
	DRAFT WHERE APPLICABLE MUST REMAIN WITHIN DIMENSIONS		THIS DRAWING CONTAINS INFORMATION THAT IS PROPRIETARY TO MOLEX INCORPORATED AND SHOULD NOT BE USED WITHOUT WRITTEN PERMISSION.				SHEET NO. 1 OF 1 SIZE D