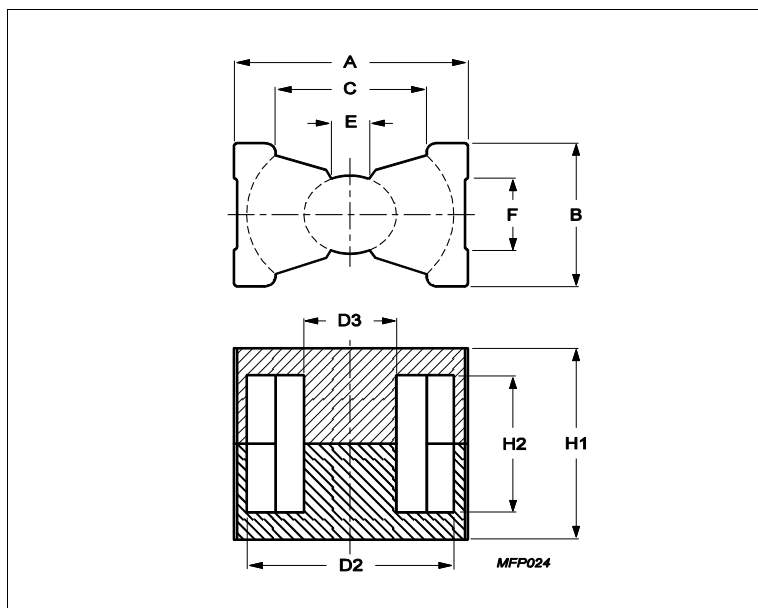


## Core **PQ32/15**



Effective parameters			
	Parameter	Value	Unit
$\Sigma(I/A)$	core factor (C1)	0.261	mm <sup>-1</sup>
<b>Ve</b>	effective volume	7640	mm <sup>3</sup>
<b>Le</b>	effective length	44.7	mm
<b>Ae</b>	effective area	171	mm <sup>2</sup>
<b>Amin</b>	minimum area	143	mm <sup>2</sup>
<b>m</b>	PQ32/15	≈ 44.2	g/set

Dimensions for product: PQ32/15

	Nom	Tol +	Tol -	Max	Min	Unit
<b>A</b>	33.00	0.50	0.50	33.50	32.50	mm
<b>B</b>	22.00	0.50	0.50	22.50	21.50	mm
<b>C</b>					19.00	mm
<b>D2</b>	27.50	0.50	0.50	28.00	27.00	mm
<b>D3</b>	13.50	0.25	0.25	13.75	13.25	mm
<b>E</b>					5.50	mm
<b>F</b>					11.60	mm
<b>H1</b>	15.00	0.25	0.25	15.25	14.75	mm
<b>H2</b>	6.00	0.30	0.30	6.30	5.70	mm

Inductance factor

Material	Value	Tol +	Tol -	Unit
3C94	8300	25%	25%	nH/turns <sup>2</sup>
3C95	10200	25%	25%	nH/turns <sup>2</sup>
3C96	7400	25%	25%	nH/turns <sup>2</sup>
3C97	10000	25%	25%	nH/turns <sup>2</sup>
3F36	5300	25%	25%	nH/turns <sup>2</sup>
3F46	3300	25%	25%	nH/turns <sup>2</sup>

Power loss: 3C94

Measuring conditions			Max	Unit
100 kHz	200 mT	100 °C	3.800	W/set

Power loss: 3C95

Measuring conditions			Max	Unit

## Core **PQ32/15**

Power loss: 3C95				
Measuring conditions			Max	Unit
100 kHz	200 mT	100 °C	3.700	W/set
100 kHz	200 mT	25 °C	4.000	W/set
Power loss: 3C96				
Measuring conditions			Max	Unit
100 kHz	200 mT	100 °C	3.400	W/set
400 kHz	50 mT	100 °C	1.500	W/set
Power loss: 3C97				
Measuring conditions			Max	Unit
100 kHz	200 mT	60 °C	3.800	W/set
100 kHz	200 mT	120 °C	3.700	W/set
100 kHz	200 mT	140 °C	4.600	W/set
Power loss: 3F36				
Measuring conditions			Max	Unit
500 kHz	50 mT	100 °C	1.100	W/set
500 kHz	100 mT	100 °C	8.800	W/set
Power loss: 3F46				
Measuring conditions			Max	Unit
1000 kHz	50 mT	100 °C	5.300	W/set
3000 kHz	10 mT	100 °C	3.600	W/set

Bsat					
Measuring conditions			Material	Min	Unit
25 kHz	250 A/m	100 °C	3C94	320	mT
25 kHz	250 A/m	100 °C	3C95	330	mT
25 kHz	250 A/m	100 °C	3C96	340	mT
25 kHz	250 A/m	100 °C	3C97	330	mT
25 kHz	250 A/m	100 °C	3F36	340	mT
25 kHz	250 A/m	100 °C	3F46	330	mT