

P.131 Mushroom knobs

Duroplast

METRIC

RoHS

PF

+230 °F
-4 °F

MATERIAL

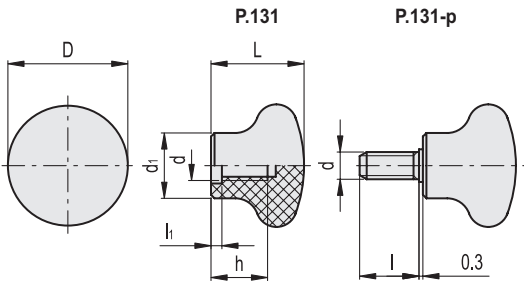
Phenolic based (PF) Duroplast, black colour, glossy finish.

STANDARD EXECUTIONS

- **P.131:** threaded blind hole.
- **P.131-p:** zinc-plated steel threaded stud, chamfered flat end UNI 947 : ISO 4753 (see Technical data on page A-10).



Conversion Table	
1 mm = 0,039 inch	
D	
mm	inch
25	0.98
32	1.26
34	1.35
44	1.73



P.131

METRIC

Code	Description	D	L	d	d1	h	l1	⚖️
46401	P.131/35-M8	34	24.5	M8	19	15	3.5	16
46501	P.131/45-M10	44	34	M10	24	20	4	36

P.131-p

Code	Description	D	L	d _{6g}	d1	l	⚖️
46411	P.131/35 p-M8x25	34	24.5	M8	19	25	36
46511	P.131/45 p-M10x20	44	34	M10	24	20	58

I.150 Mushroom knobs

Duroplast

METRIC

RoHS

PF

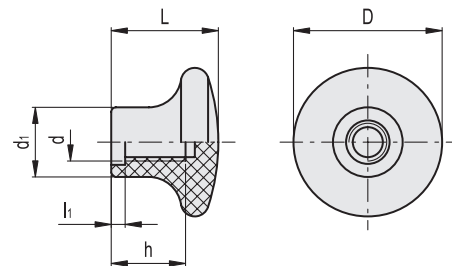
+230 °F
-4 °F

MATERIAL

Phenolic based (PF) Duroplast, black colour, glossy finish.

STANDARD EXECUTION

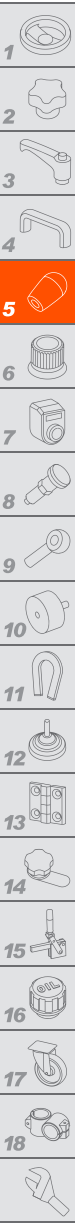
Threaded blind hole.



I.150

METRIC

Code	Description	D	L	d	d1	h	l1	⚖️
20201	I.150/25-M5	25	19	M5	12	10	3	6
20202	I.150/25-M6	25	19	M6	12	10	3	5
20211	I.150/30-M6	32	23	M6	15	16	3	13
20212	I.150/30-M8	32	23	M8	15	19	3	12



Fixed & Revolving handles