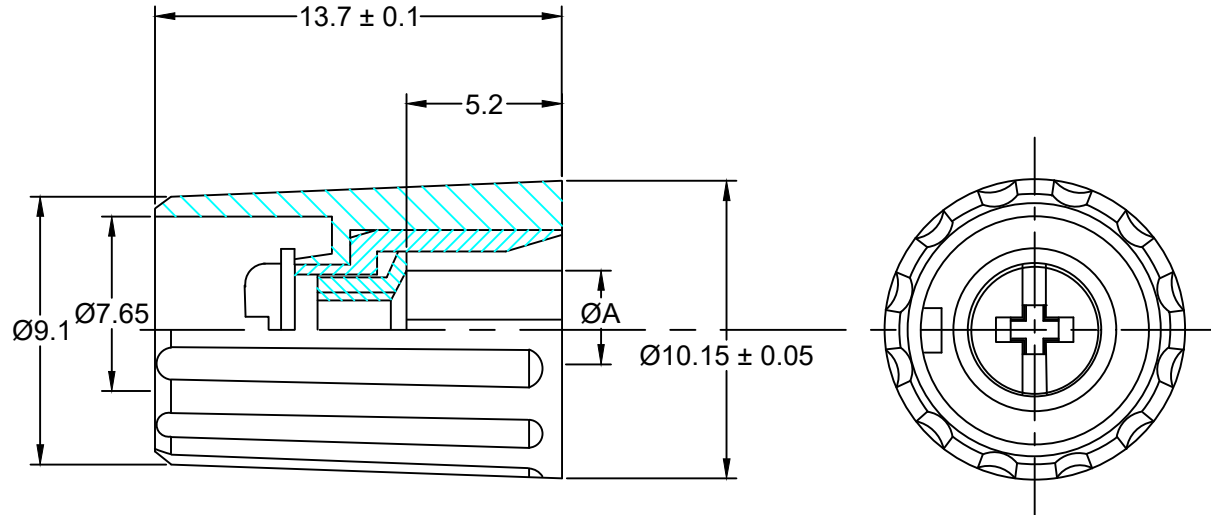


MATERIAL AND FINISH
 Knob: Polyamide
 Collet, Sleeve & nut: Brass 58

RoHS
 COMPLIANT



ORDERING CODE:

20-10-XX X
 1 2

1) SHAFT DIAMETER (A)

- 30 = 3mm
- 31 = 1/8"
- 40 = 4mm
- 60 = 6mm
- 61 = 1/4"

2) COLOR (SEE CHART)

P/N	COLOR
20-10-XX1	LIGHT GRAY
20-10-XX2	GRAY
20-10-XX3	BLACK
26-10-XX4	RED

TOLERANCE UNLESS OTHERWISE SPECIFIED	
X	± 1
X.X	± 0.4
X.XX	± 0.13

DRAWN BY	PB	DATE:	3/17/22
CHECK BY		DATE:	
APPR BY		DATE:	

Power Dynamics, Inc.
 Phone: 973 560-0019 Whippary, New Jersey Fax: 973 560-0076

PART: STANDARD KNOB
 10mm KNOB DIAMETER

PART #: 20-10-XXX		SHEET 1 of 1
SIZE: A	ALL DIMENSIONS FOR REFERENCE ONLY DIMENSIONS ARE IN MILLIMETERS	REV:
SCALE: NTS		

REVISIONS	CHANGE	CHK	CHK	APPR
REV	DATE			