



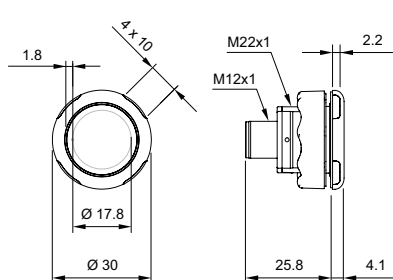
Series 84 EAO IO-Link Touch.

Operating Instructions «Standard» button.

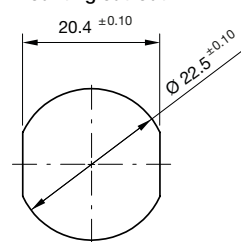
Technical data

Operating voltage	DC 24V (8.4 ... 32V)
Load current	Max. 200 mA
Output	Adjustable PNP/NPN; NO/NC
Length of output pulse	Adjustable
Reverse polarity protection	Protection of all cables/lines
Short circuit protection	Protected against short circuit and overload
Voltage drop	Max. 5V at 200 mA load current
Power consumption at 24V	Max. 40 mA
Operating temperature	-30 °C ... +65 °C
Protection degree IP	Front side IP69K maximum unevenness in mounting surface < 0.1 mm
Protection degree IK	IK08
Communication interface	IO-Link specification V1.1
Control voltage E1/E2	on 80 % U_{V+} , off 0 ... 20 % U_{V+}
Measuring principle	Capacitive
Type of actuation	Touch
Actuation force	No actuation force required
Max. altitude	2000 m above sea level with «CSA listing»
Relative air humidity	Max. 95 %, non-condensing

Dimensions



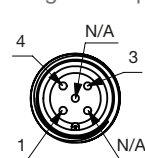
Mounting cut-out



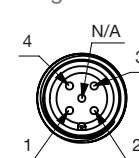
The IO-Link Touch is secured against rotation by the illustrated hole.

Connection options

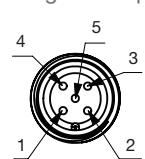
Plug M12 3-pin



Plug M12 4-pin



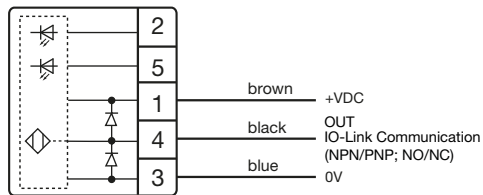
Plug M12 5-pin



All dimensions in mm.

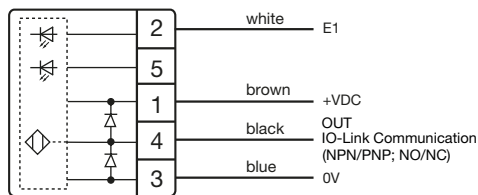
Connection plan

3-pin



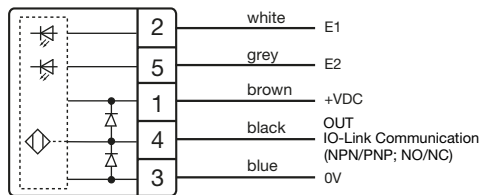
The product description will indicate the configuration.

4-pin



The product description will indicate the configuration.

5-pin



The product description will indicate the configuration.

Standard symbols (examples)

Symbol B10	Symbol B11	Symbol B12	Symbol B13
Symbol B14	Symbol C17	Symbol C18	Symbol C12
Symbol C19	Symbol C16		

Safety

General safety

All work on electrical systems or operating equipment may only be carried out by a specially qualified electrician according to the applicable electrotechnical regulations.

The safety of the system in which the IO-Link Touch is integrated is the responsibility of the operator.

WARNING



Improper work on electrical systems!

Electric shock can result in death or life-threatening injuries.

- Before working on electrical systems, disconnect them from their voltage supply and secure them against being switched on again
- Work on electrical installations should be carried out only by qualified personnel in compliance with local and national electrical regulations and specifications



Intended use

The IO-Link Touch is intended for use in accordance with the items listed here, the values from the "Technical specifications" chapter and the product description.

- Only connect the product to a limited energy source as per IEC 61010 or an NEC class 2 power supply unit.
- Source current < 4A at maximum operating voltage

Reasonably foreseeable misuse

Any use other than as specified in the section Intended use or extending beyond this is deemed to be improper.

The IO-Link Touch is not suitable for:

- Use in potentially explosive atmospheres.
- Use as a safety component as per directive 2006/42/EC

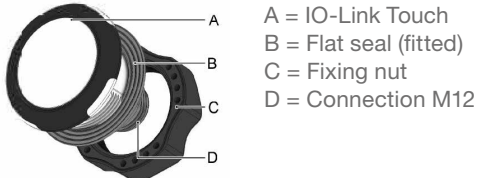
Foreword

These operating instructions are intended for technicians/installers and operators and should be kept for future reference. Read these operating instructions carefully and make sure that you have fully understood the contents before installing or working with the IO-Link Touch.

Assembly

Requirements

- Mounting surface is level and clean (maximum unevenness in mounting surface 0.1 mm)
- The panel is between 1.0 mm and 9.5 mm thick



- Disconnect the system from its voltage supply and secure it against being switched on again
- Set the desired position of the IO-Link Touch and drill the hole according to the drilling pattern
- Insert the IO-Link Touch (A) into the prepared hole and screw the lock nut (C) on
- Position the IO-Link Touch (A) and tighten the lock nuts with max. 1.5 Nm
- Connect the IO-Link Touch (A) electrically according to the connection plan

Maintenance

Maintenance operations

Carry out the following maintenance operations at the specified intervals.

Maintenance operations	as needed	annually
Clean the switch surface	X	
Check cables for intactness and firm fit		X
Check screw connections for tightness		X

NOTICE

Solvents contained in cleaning agents can attack the plastic of the button!

- Clean the surface of the button with a neutral cleaning agent or a damp microfiber cloth

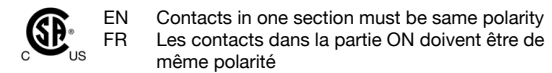
Disassembly

- Disconnect the system from its voltage supply and secure it against being switched on again
- Disconnect the electrical connection and remove the lock nuts

Disposal

Different types of electrical and electronic components must be recycled according to their type. All applicable statutory, state and local laws and regulations must be complied with.

Approvals



EAO Contact.

Your centre of excellence.

Headquarters

EAO Holding AG
Tannwaldstrasse 88
CH-4600 Olten
Telephone +41 62 286 92 00
info@eao.com

Manufacturing Companies

Switzerland
EAO AG
Tannwaldstrasse 88
CH-4600 Olten
Telephone +41 62 286 91 11
info@eao.com

EAO Systems AG
Tannwaldstrasse 88
CH-4600 Olten
Telephone +41 62 286 91 11
sales.esy@eao.com

China
EAO (Guangzhou) Ltd.
3/F, Block G4, South China
New Materials Innovation Park
31 Kefeng Road
Guangzhou Science City
CN-Guangzhou, PRC
Telephone +86 20 3229 0390
sales.ecn@eao.com

Germany
EAO Automotive GmbH & Co. KG
Richard-Wagner-Straße 3
DE-08209 Auerbach/Vogtland
Telephone +49 3744 8264 0
sales.esa@eao.com

North America
EAO Corporation
One Parrott Drive
Shelton
US-CT 06484
Telephone +1 203 951 4600
sales.eus@eao.com

Sales Companies

China
EAO (Guangzhou) Ltd.
3/F, Block G4, South China
New Materials Innovation Park
31 Kefeng Road
Guangzhou Science City
CN-Guangzhou, PRC
Telephone +86 20 3229 0390
sales.ecn@eao.com

EAO (Shanghai) Office
Rm.401, Lihpao Plaze,
NO.159 Shenwu Road,
Minhang District,
CN-Shanghai, 201106.
PRC
Telephone +86 21 6095 0717
sales.ecn@eao.com

France
EAO France SAS
Bâtiment Silex
15 rue des Cuirassiers
CS 33821
FR-69487 Lyon Cedex O3
Telephone +33 9 74 18 93 41
sales.eifr@eao.com

**Germany, Austria, Czech Republic,
Poland, Slovakia**
EAO GmbH
Langenberger Straße 570
DE-45277 Essen
Telephone +49 201 8587 0
sales.ede@eao.com

Hong Kong (Asia Pacific)
EAO (Far East) Ltd.
Unit A1, 1/F, Block A
Tin On Industrial Building
777 Cheung Sha Wan Road
Lai Chi Kok, Kln
HK-Hong Kong
Telephone +852 27 86 91 41
sales.ehk@eao.com

Italy
EAO Italia S.r.l.
Centro Direzionale Summit –
Palazzo D1
Via Brescia 28
IT-20063 Cernusco sul Naviglio (MI)
Telephone +39 029 247 0722
sales.eit@eao.com

Japan
EAO Japan Co. Ltd.
Net 1 Mita Bldg. 3F
3-1-4 Mita Minato-ku
JP-Tokyo 108-0073
Telephone +81 3 5444 5411
sales.ejp@eao.com

Netherlands, Belgium
EAO Benelux B.V.
Kamerlingh Onnesweg 46
NL-3316 GL Dordrecht
Telephone +31 78 653 17 00
sales.enl@eao.com

North America
EAO Corporation
One Parrott Drive
Shelton
US-CT 06484
Telephone +1 203 951 4600
sales.eus@eao.com

Switzerland
EAO Schweiz AG
Tannwaldstrasse 86
CH-4600 Olten
Telephone +41 62 286 95 00
sales.ech@eao.com

**United Kingdom, Denmark,
Finland, Ireland, Norway, Sweden**
EAO Ltd.
Highland House
Albert Drive
Burgess Hill
GB-West Sussex RH15 9TN
Telephone +44 1444 236 000
sales.euk@eao.com