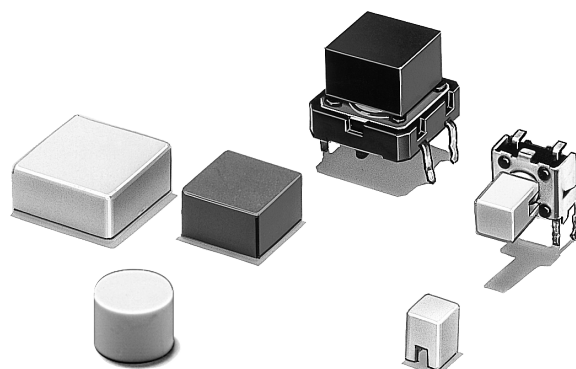


Key Top Designed Specially for Projected-plunger-type B3F, B3FS, and B3W Switches

- Available in a wide range of colors and sizes.

RoHS Compliant



### ■ List of Models

For B3F, B3FS, and B3W Switches

| Color  | 6 × 6 mm Switches<br>B3F-1000, -1000-G,<br>B3F-3000, -3000-G, -6000,<br>B3W-1000,<br>B3FS-1000 |                   |                | 12 × 12 mm Switches<br>B3F-4000, -5000, -5001,<br>B3W-4000,<br>B3FS-4000 |                    |             |
|--------|--|-------------------|----------------|--|--------------------|-------------|
|        | 4 × 4 mm Key Top   | 6 mm dia. Key Top | D-type Key Top | 9 × 9 mm Key Top   | 12 × 12 mm Key Top | 9.5-mm dia. |
| Ivory  | B32-1000   | B32-2000          | B32-2100       | B32-1200   | B32-1300           | B32-1600    |
| Black  | B32-1010   | B32-2010          | B32-2110       | B32-1210   | B32-1310           | B32-1610    |
| Orange | B32-1020   | ---               | ---            | B32-1220   | B32-1320           | B32-1620    |
| Yellow | B32-1030   | ---               | ---            | B32-1230   | B32-1330           | B32-1630    |
| Blue   | B32-1040   | ---               | ---            | B32-1240   | B32-1340           | ---         |
| Green  | B32-1050   | ---               | ---            | B32-1250   | B32-1350           | ---         |
| White  | B32-1060   | ---               | ---            | B32-1260   | B32-1360           | ---         |
| Red    | B32-1080   | ---               | ---            | B32-1280   | B32-1380           | ---         |

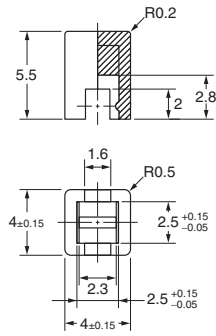
Note: Bulk Packed, 1000 pcs per bag. Order in multiple of the package quantity.

### ■ Characteristics

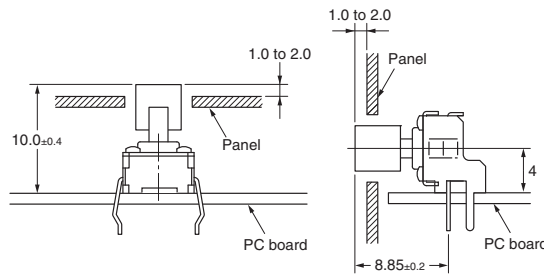
|                               |  |
|-------------------------------|--|
| Ambient operating temperature | -25°C to +70°C at 60%RH max. (with no icing or condensation) |
| Ambient operating humidity    | 35% to 85% (at 5 to 35°C)                                    |

■ Dimensions (Unit: mm)

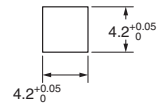
B32-10□0



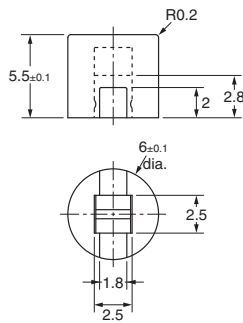
Reference Dimensions



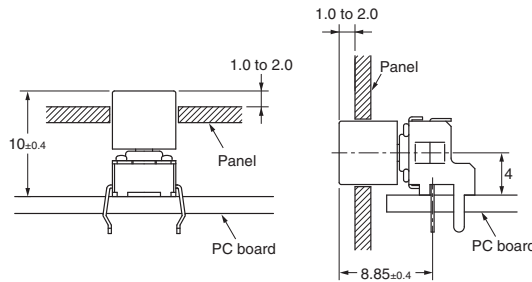
Panel Cutout



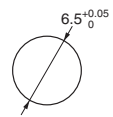
B32-2000  
B32-2010



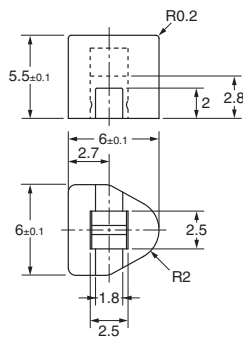
Reference Dimensions



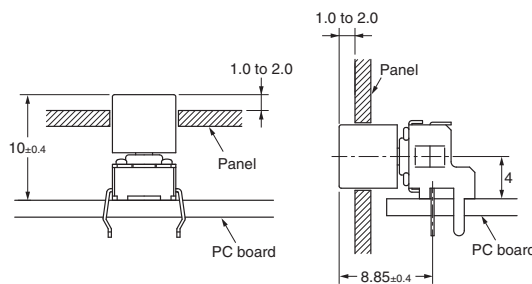
Panel Cutout



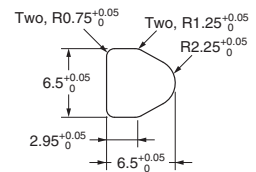
B32-2100  
B32-2110



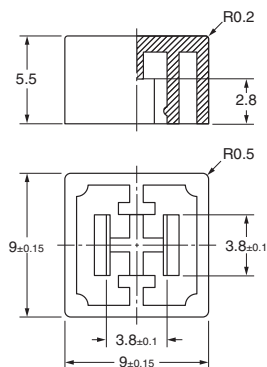
Reference Dimensions



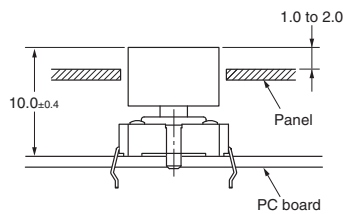
Panel Cutout



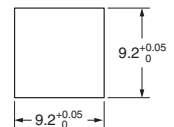
B32-12□0



Reference Dimensions

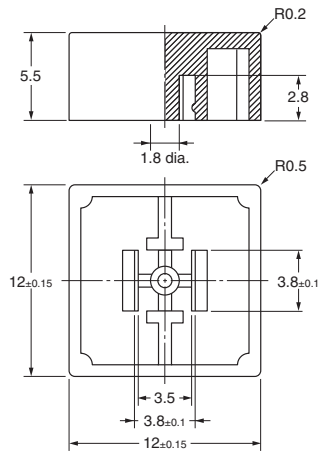
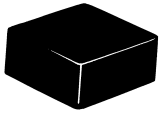


Panel Cutout

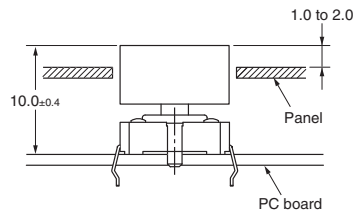


**Note:** Unless otherwise specified, a tolerance of  $\pm 0.4$  mm applies to all dimensions.

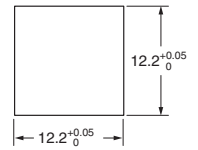
**B32-13□0**



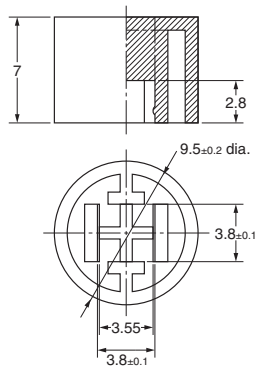
**Reference Dimensions**



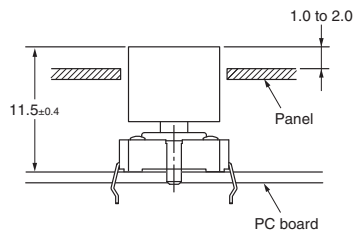
**Panel Cutout**



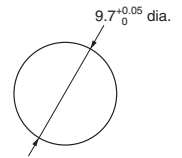
**B32-16□0**



**Reference Dimensions**



**Panel Cutout**



**Note:** Unless otherwise specified, a tolerance of  $\pm 0.4$  mm applies to all dimensions.

**■ Precautions**

Mount the Key Top on to the Switch after soldering, otherwise the Key Top may be deformed by the soldering heat.

Please check each region's Terms & Conditions by region website.

**OMRON Corporation**  
Electronic and Mechanical Components Company

**Regional Contact**

**Americas**  
<https://www.components.omron.com/>  
**Asia-Pacific**  
<https://ecb.omron.com.sg/>  
**Korea**  
<https://www.omron-ecb.co.kr/>

**Europe**  
<http://components.omron.eu/>  
**China**  
<https://www.ecb.omron.com.cn/>  
**Japan**  
<https://www.omron.co.jp/ecb/>

© OMRON Corporation 2018 All Rights Reserved.  
In the interest of product improvement, specifications are subject to change without notice.

**Cat. No. A077-E1-07**  
1218(0207)(O)