



Quality Products. Service Excellence.

Tara Plus Suspension System *TPSS Series*

NEMA 12, 13



Application

- Taraplus enclosure suspension systems are designed for light and medium loads.
- The strength of tube and cast fittings provide a highly flexible robust system.

Standards

- Complies with
 - IEC 60529 IP54

Construction

- Enclosure coupling and elbow coupling fittings are die-cast from G AL SI 12 aluminum.
- Suspension tubing is steel.

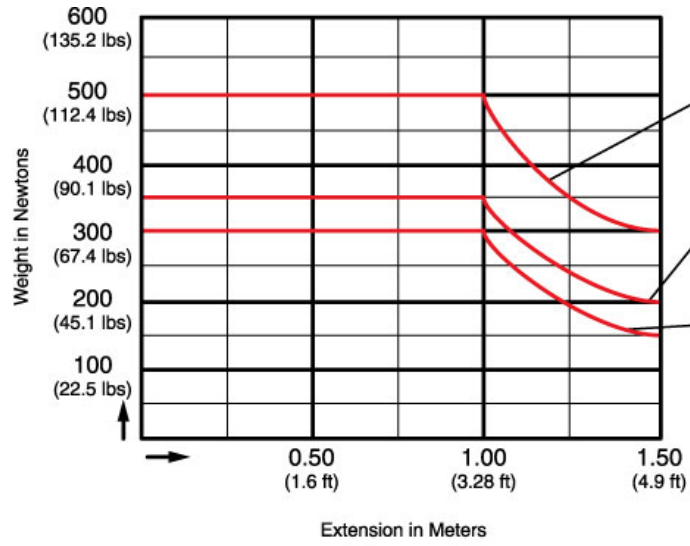
Finish

- Fittings are finished in RAL 7040 window gray.
- Suspension tubing is RAL 7035 light gray.

Accessories

- | | |
|-----------------------|-----------------------|
| • Suspension Tube | • Tara Plus Coupling |
| • Tilt Coupling | • Elbow Coupling |
| • Tilt Elbow Coupling | • Fixed Elbow 48 |
| • Fixed Elbow 70 | • Rotating Elbow |
| • Base 48 | • Base 70 |
| • Rotating Base 70 | • Socket Joint |
| • Wall Joint | • Vertical Wall Joint |
| • Intermediate Joint | |

Tara Plus Suspension System (TPSS Series) - Hammond Mfg.



Measurement Conversions
1 kg = 9.81 N 1 lb = 4.44 N
e.g. 500 Newtons = 51 kg = 112.4 lbs
300 Newtons = 30.6 kg = 67.4 lbs
100 Newtons = 10.2 kg = 22.5 lbs
1 foot = 0.305 m

Data subject to change without notice

© 2023. Hammond Manufacturing Ltd. All rights reserved.