

Remington Industries is a proud supplier of 6061 Aluminum T6511 Mill Stock Flat Bars, Round Rods, and Angles. Aluminum 6061 is a lightweight, general-purpose aluminum alloy that can easily be machined or welded. It has a high resistance to corrosion and an excellent weight-to-strength ratio. Its T6511 temper also means that it has been heat treated for additional strength (Yield Strength: 35,000 psi). Additionally, this 6061 aluminum meets ASTM B221 specifications.

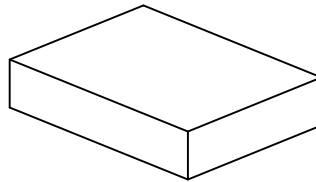
We offer aluminum bars, rods, and angles in many different sizes; take a look at our selection using the charts below. If you can't find a piece of raw material that meets your specifications, feel free to [contact Remington Industries](#) to see how we can help you with our [Custom Raw Materials Services](#).

- Material: 6061 General Purpose Aluminum, Extruded
- Temper: T6511
- Finish: Unpolished (Mill)
- Yield Strength: 35,000 psi
- Easily welded or machined
- Specification: ASTM B221
- Available Shapes:
 - Flat Bar/Plate
 - Round Rod
 - Angle

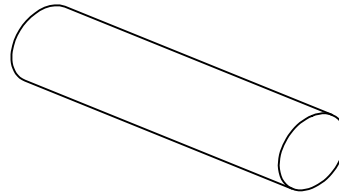
ALUMINUM FLAT BAR AVAILABLE DIMENSIONS

| THICKNESS | WIDTH | LENGTH |
|---------------|-----------------|------------------|
| ¼" (6.35 mm) | ½" (12.70 mm) | 1" (25.40 mm) |
| | 1" (25.40 mm) | 2" (50.80 mm) |
| ⅜" (9.53 mm) | 1 ½" (38.10 mm) | 4" (101.60 mm) |
| | 2" (50.80 mm) | 6" (152.40 mm) |
| ½" (12.70 mm) | 2 ½" (63.50 mm) | 8" (203.20 mm) |
| | 3" (76.20 mm) | 10" (254.00 mm) |
| ⅝" (15.88 mm) | 4" (101.60 mm) | 12" (304.80 mm) |
| | 6" (152.40 mm) | 24" (609.60 mm) |
| ¾" (19.05 mm) | 8" (203.20 mm) | 36" (914.40 mm) |
| | 1" (25.40 mm) | 48" (1219.20 mm) |

ALUMINUM FLAT BAR



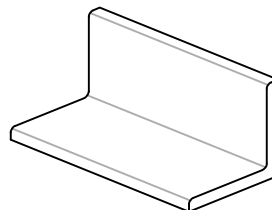
ALUMINUM ROUND ROD



ALUMINUM ROUND ROD AVAILABLE DIMENSIONS

| DIAMETER | LENGTH |
|-----------------|------------------|
| ¼" (6.35 mm) | 1" (25.40 mm) |
| | 2" (50.80 mm) |
| ⅝" (7.94 mm) | 4" (101.60 mm) |
| | 6" (152.40 mm) |
| ⅜" (9.53 mm) | 8" (203.20 mm) |
| | 10" (254.00 mm) |
| ½" (12.70 mm) | 12" (304.80 mm) |
| | 24" (609.60 mm) |
| ⅝" (15.88 mm) | 36" (914.40 mm) |
| | 48" (1219.20 mm) |
| ¾" (19.05 mm) | 1" (25.40 mm) |
| | 2" (50.80 mm) |
| 7⁄8" (22.23 mm) | 4" (101.60 mm) |
| | 6" (152.40 mm) |
| 1" (25.40 mm) | 8" (203.20 mm) |
| | 10" (254.00 mm) |
| 1 ⅛" (28.58 mm) | 12" (304.80 mm) |
| | 24" (609.60 mm) |
| 1 ¼" (31.75 mm) | 36" (914.40 mm) |
| | 48" (1219.20 mm) |
| 1 ⅜" (34.93 mm) | 1" (25.40 mm) |
| | 2" (50.80 mm) |
| 1 ½" (38.10 mm) | 4" (101.60 mm) |
| | 6" (152.40 mm) |
| 1 ¾" (44.45 mm) | 8" (203.20 mm) |
| | 10" (254.00 mm) |
| 2" (50.80 mm) | 12" (304.80 mm) |
| | 24" (609.60 mm) |

ALUMINUM ANGLE



ALUMINUM ANGLE AVAILABLE DIMENSIONS

| WIDTH x HEIGHT x THICKNESS | LENGTH |
|---|------------------|
| ¾" x ¾" x ⅛" (9.53 x 9.53 x 3.18 mm) | 1" (25.40 mm) |
| | 2" (50.80 mm) |
| 1" x 1" x ⅛" (25.40 x 25.40 x 3.18 mm) | 4" (101.60 mm) |
| | 6" (152.40 mm) |
| 1" x 1" x ¼" (25.40 x 25.40 x 6.35 mm) | 8" (203.20 mm) |
| | 10" (254.00 mm) |
| 1 ½" x 1 ½" x ⅛" (38.10 x 38.10 x 3.18 mm) | 12" (304.80 mm) |
| | 24" (609.60 mm) |
| 1 ½" x 1 ½" x ¼" (38.10 x 38.10 x 6.35 mm) | 36" (914.40 mm) |
| | 48" (1219.20 mm) |
| 2" x 2" x ⅛" (50.80 x 50.80 x 3.18 mm) | 1" (25.40 mm) |
| | 2" (50.80 mm) |

Aluminum Flat Bars, Round Rods, & Angles

Aluminum 6061 Data Sheet

Remington Industries is proud to offer our Custom Raw Materials Services

We are proud to offer a range of custom services for raw materials to best meet your needs. With our extensive knowledge of raw materials, experience in the industry, and relevant connections, we can determine product availability and source the materials you need to complete your project.

We also offer Value-Added Services for your raw materials:

- Cut to Length
- CNC Turning & Milling
- Grinding
- CAD Drawings
- Prototyping

If you have any questions or need any information about our [Raw Materials Services](#), feel free to contact us! It only takes one call to get experienced assistance.

Contact us by phone:
(815) 385-1987

Contact us by email:
sales@remingtonindustries.com

DATE | ISS. | REVISION | BY

Drawn by: AG 1/31/20
Drawing rev.: --

Remington
Industries

3521 N. Chapel Hill Rd
Johnsburg, IL 60051 USA
remingtonindustries.com