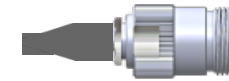


6 INCHES LENGTH



Connector A
132114RP
SMA Plug Straight
Brass Gold + Heatshrink

50 Ohm RG-174
Continuity/Hi-Pot

Connector B
172204
N-Type Jack Straight
Brass White Bronze + Heatshrink

Assembly & Label Notes

Assembly label to be placed ~ 2" from end of connector A and/ or heat shrink
Assembly shall be built with SN96.5 LEAD FREE solder.
See Routing Notes for additional assembly & testing instructions.

Connector A		Cable		Connector B	
Part #:	132114RP	Part #:	RG-174	Part #:	172204
Description:	SMA PLUG RP RG316 500	Description:	RG-174 - PE 0.1	Description:	N-Type JK RG174 RG316 LMR100 500
Type:	SMA	Dielectric:	PE	Type:	N-Type
Gender:	Plug	Shielding:	Braid	Gender:	Jack
Body Type:	Straight	Diameter:	0.1	Body Type:	Straight
Contact Type:	Crimp	Impedance:	50 Ohm	Contact Type:	Solder
Polarity:	Reverse	Sheathing:	None	Polarity:	Standard
Impedance:	50 Ohm	Testing:	Continuity Hi-Pot	Impedance:	50 Ohm
Mounting:	Cable	Length:	6 Inches	Mounting:	Cable
Body Material:	Brass			Body Material:	Brass
Body Finish:	Gold			Body Finish:	White Bronze
IP Rating:	None			IP Rating:	None
Contact Material:	Beryllium Copper			Contact Material:	Phosphor Bronze
Contact Finish:	Gold			Contact Finish:	Gold
Max. Freq.:	12.4 GHz			Max. Freq.:	11 GHz
Booting:	SMA Plug Straight RP			Booting:	N-Type Jack Straight
				Clocking:	0°



CONTROLLED DOCUMENT - DO NOT COPY

THIS DRAWING MAY CONTAIN PATENTED OR PROPRIETARY INFORMATION AND MUST NOT BE USED FOR ANY PURPOSE DETRIMENTAL TO CUSTOM CABLE INC. IT MAY NOT BE REPRODUCED OR TRANSCRIBED IN ANY FORM WITHOUT THE WRITTEN CONSENT OF CUSTOM CABLE INC. ACCEPTANCE OF THIS DRAWING ESTABLISHES AND AGREEMENT OF THE FOREGOING.

Title:
SMA-ST-PL-RP/N-ST-JK G174 6I

Part No:
Q-680200003006I

UNLESS SPECIFIED
TOLERANCE:
0-18 inches +/- 1/2"
over 18" +/- 2%
ASSEMBLY:
CENTER LABEL IF LENGTH
IS LESS THAN 12 INCHES