

1/16 DIN Sized, Analog-Set Controller Features Dual Scale Dial

- Proportional-derivative (PD) control or ON/OFF control models
- Front panel offset adjustment on PD controllers
- Choose contact or voltage outputs
- Type J or K thermocouples, platinum RTD and thermistor input models
- Fits standard 8-pin round sockets
- Panel mounting hardware included
- Sockets, protective cover, and other accessories may be ordered separately



Ordering Information

■ TEMPERATURE CONTROLLERS

Add the temperature range and supply voltage to the part number when you order. The minimum scale division is in parentheses. For example, **E5C2-R20K-32° to 392°F-AC120**.

Control type	Output type	Input type (specify temperature range from choices below)	
		Thermocouple type K	Thermocouple type J
ON/OFF	Contact	E5C2-R20K	E5C2-R20J
	Voltage	E5C2-Q20K	E5C2-Q20J
PD	Contact	E5C2-R40K	E5C2-R40J
	Voltage	E5C2-Q40K	E5C2-Q40J
Temperature ranges		32° to 392°F (10)/0° to 200°C (5) 32° to 572°F (20)/0° to 300°C (10) 32° to 752°F (20)/0° to 400°C (10) 32° to 1112°F (50)/0° to 600°C (20) 32° to 1472°F (50)/0° to 800°C (20) 32° to 1832°F (50)/0° to 1000°C (25) 32° to 2192°F (50)/0° to 1200°C (25)	32° to 392°F (10)/0° to 200°C (5) 32° to 572°F (20)/0° to 300°C (10) 32° to 752°F (20)/0° to 400°C (10)
Supply voltages		110/120 VAC, 50/60 Hz or 220/240 VAC, 50/60 Hz	

Control type	Output type	Input type (specify the temperature range from choices below)	
		Platinum RTD	Thermistor
ON/OFF	Contact	E5C2-R20P-DIN	E5C2-R20G
	Voltage	E5C2-Q20P-DIN	E5C2-Q20G
PD	Contact	E5C2-R40P-DIN	—
	Voltage	E5C2-Q40P-DIN	—
Temperature ranges		-58° to 122°F (5)/-50° to 50°C (2) -4° to 176°F (5)/-20° to 80°C (2) 32° to 122°F (2)/0° to 50°C (1) 32° to 212°F (5)/0° to 100°C (2) 32° to 392°F (10)/0° to 200°C (5) 32° to 572°F (20)/0° to 300°C (10) 32° to 752°F (20)/0° to 400°C (10)	-58° to 122°F (5)/-50° to 50°C (2) 32° to 212°F (5)/0° to 100°C (2) 122° to 302°F (5)/50° to 150°C (2) 212° to 392°F (5)/100° to 200°C (2) 302° to 572°F (10)/150° to 300°C (5)
Supply voltages		110/120 VAC, 50/60 Hz or 220/240 VAC, 50/60 Hz, or 24 VDC	

■ ACCESSORIES

Description		Part number
Sockets	Bottom surface or track mounting, top screw terminals	P2CF-08
	Back mounting, for use with Y92F-30 mounting adapter supplied, bottom screw terminals	P3G-08
	Back mounting plug type, for use with Y92F-30 mounting adapter supplied	US08
Protective cover	Hard plastic cover protects against accidental resetting.	Y92A-48B
Mounting track	DIN rail, 50 cm (1.64 ft) length	PFP-50N
	DIN rail, 1 m (3.28 ft) length	PFP-100N
	End plate	PFP-M
	Spacer	PFP-S

■ REPLACEMENT PART

Description	Part number
Panel mounting bracket; one supplied with each controller	Y92F-30

Specifications

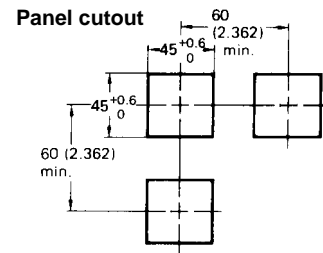
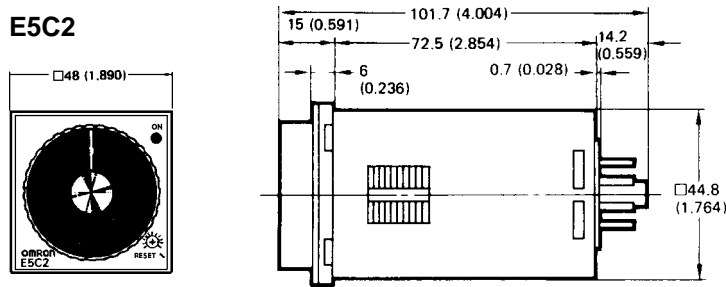
Part number	E5C2-□□□K	E5C2-□□□J	E5C2-□□□P-DIN	E5C2-□□□G
Sensor input types	Thermocouple type K	Thermocouple type J	Platinum RTD	Thermistor
Supply voltage	100/120 VAC, 50/60 Hz or 220/240 VAC, 50/60 Hz			
Operating voltage	90 to 110% of rated supply voltage			
Power consumption	Approx. 2 VA			
Control output	Number	One output, built in		
	Type	Relay	SPDT, 3 A, 250 VAC (resistive load), switching capacity of 330 VA	
		Voltage	5 VDC, 10 mA with short-circuit protection	
	Hysteresis	0.5% max. of full scale (fixed)		
	Service life	100,000 electrical operations minimum for relay output 10 million mechanical operations minimum for relay output		
Alarm output	Not available			
Setting accuracy	±2% maximum of full scale			
Control modes	Type	ON/OFF (E5C2-□20□) or PD (E5C2-□40□)		
	Proportional band	3% of full scale (fixed)		
	Reset	3% minimum of full scale (variable); front panel potentiometer adjustment		
	Control period	Approx. 20 seconds, where ratio of ON to OFF is 1:1		
Memory protection	Not available			
Indicators	Operation Indicator (red LED)			
Materials	Plastic case			
Mounting	Fits 1/16 DIN panel cutouts; includes panel mounting adapter Y92F-30			
Connections	Terminals for standard 8-pin round connectors			
Weight	Approx. 200 g (7 oz.)			
Enclosure ratings	Front panel	IEC IP40, NEMA 4 with optional cover Y92A-48N		
	Housing	IEC IP20		
	Terminals	IEC IP00		
Approvals	UL	Recognized, File No. E68481, approved control output rating 1.5 A, 250 VAC		
	CSA	Certified, File No. LR59623, approved control output rating 1.5 A, 250 VAC		
	Other	SEV, File No. D4.11/634		
Ambient temperature	Use	-10° to 55°C (14° to 131°F)		
	Storage	-25° to 65°C (-13° to 149°F)		
Humidity	35 to 85% RH			
Insulation resistance	20 MΩ minimum at 500 VDC			
Dielectric strength	2,000 VAC, 50/60 Hz for 1 minute			
Vibration	Mechanical	10 to 55 Hz 0.75 mm (0.03 in) in X, Y, and Z directions for 2 hours each		
	Malfunction	2 to 55 Hz, 2 G, in X, Y, and Z directions for 10 minutes each		
Shock	Mechanical	300 m/s ² in 6 directions, 3 times each		
	Malfunction	200 m/s ² in 6 directions, 3 times each		

Dimensions

Unit: mm (inch)

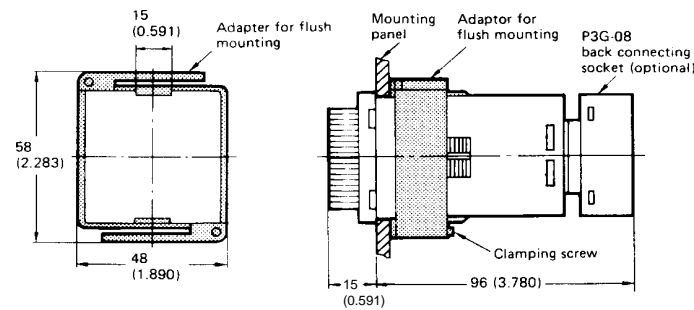
■ TEMPERATURE CONTROLLER

E5C2



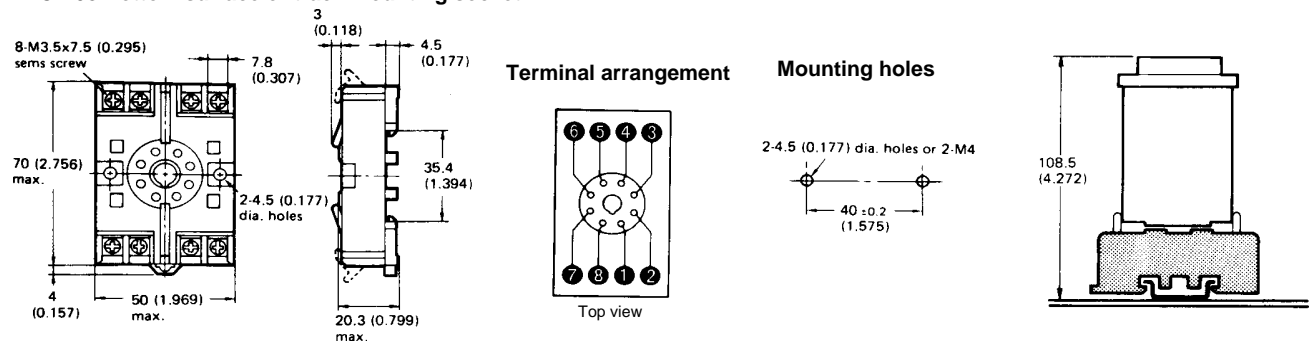
NOTE: Recommended panel thickness is 1 to 4 (0.039 to 0.157).

E5C2 Temperature Controller Mounted in Y92F-30 Panel Mounting Adapter (supplied)

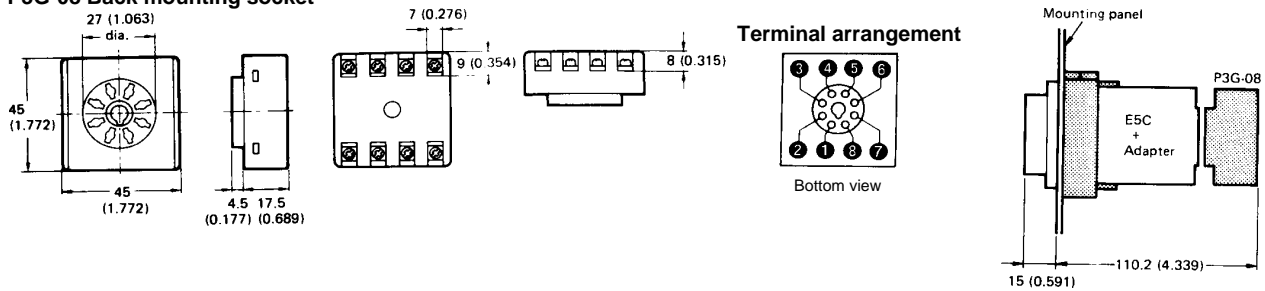


■ SOCKETS

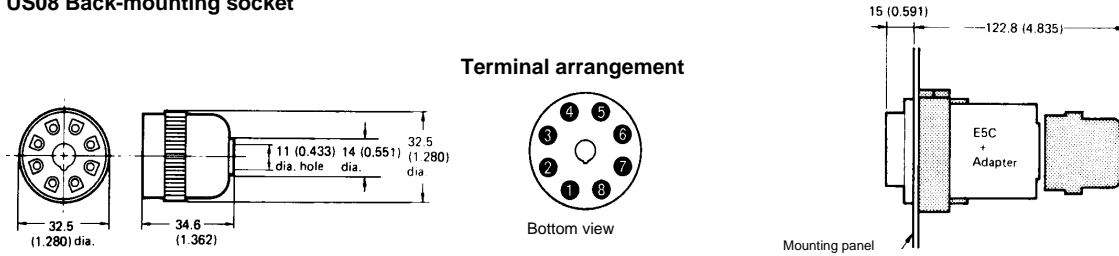
P2CF-08 Bottom surface or track mounting socket



P3G-08 Back mounting socket

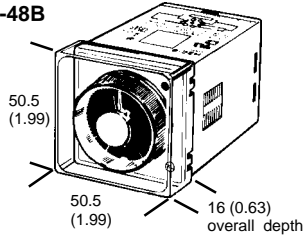


US08 Back-mounting socket



PROTECTIVE COVER

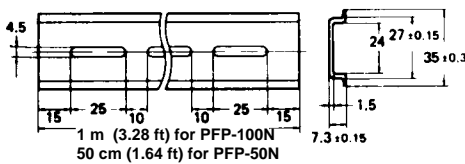
Y92A-48B



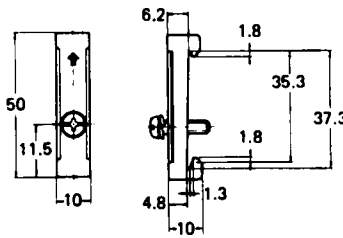
Hard plastic cover Y92A-48B snaps onto the front of the temperature controller to prevent accidental resetting. It also shields the front panel from dirt and water. The cover is intended for use in areas where unusual service conditions do not exist.

MOUNTING TRACK AND ACCESSORIES

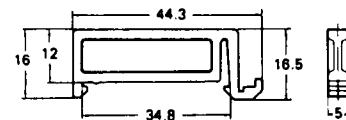
PFP-100N/PFP-50N DIN Rail



PFP-M End Plate

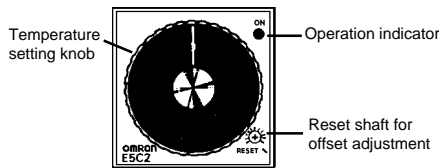


PFP-S Spacer

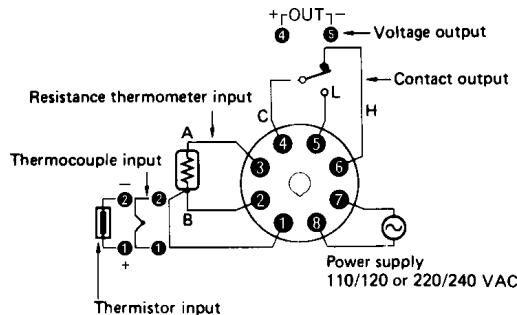


Nomenclature

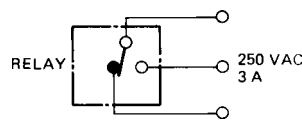
E5C2



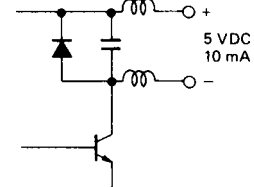
Connections



Contact output



Voltage output





OMRON ELECTRONICS, INC.
One East Commerce Drive
Schaumburg, IL 60173
1-800-55-OMRON

OMRON CANADA, INC.
885 Milner Avenue
Scarborough, Ontario M1B 5V8
416-286-6465