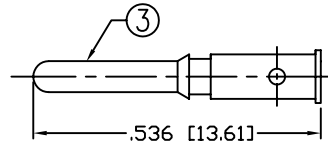
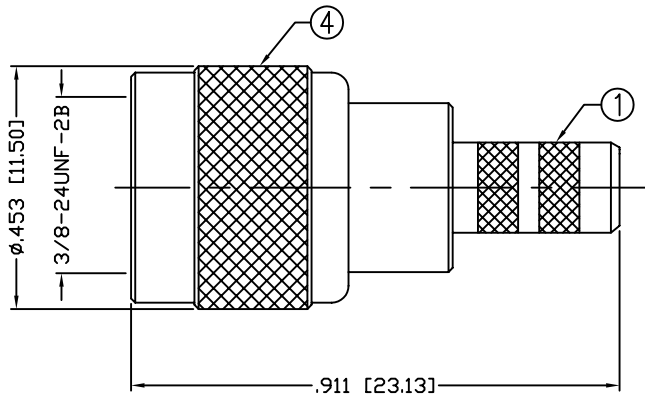
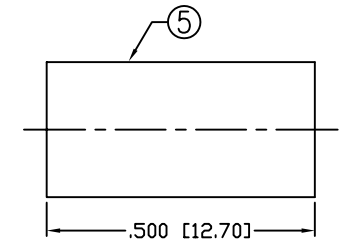


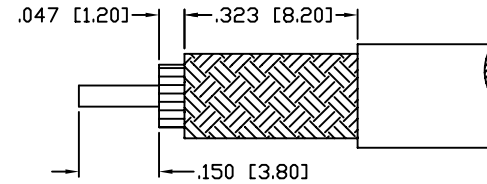
PART NO.		<b>RFU-600-6</b>		
REV	DESCRIPTION	DWN	DATE	APPROVED
-	ENGINEERING RELEASE	CZS	6/29/01	JDMc
A	ADDED CRIMP DIES	CZS	08/26/08	JDMc



RECOMMENDED CRIMP DIE: .068"



RECOMMENDED CRIMP DIE: 213"



RECOMMENDED STRIPPING INSTRUCTIONS

**SPECIFICATIONS:**

IMPEDANCE: 50 Ohms  
 FREQUENCY RANGE: 0-2.5 GHz  
 VSWR: 1.25 MAX.  
 WORKING VOLTAGE: 335 V rms Max. @ Sea Level  
 INSULATION RESISTANCE: 5k M Ohms min.  
 TEMPERATURE RANGE: -65°C TO 165°C  
 FOR RG-58, 58A, 58C, 141, 141A, BELDEN 8240, 9907  
 8259, 8262, 9201, 9203, 9310, 9311 & COMM/SCOPE 0268

5	FERRULE	1	BRASS	NICKEL, 100μ"
4	SHELL	1	BRASS	NICKEL, 100μ"
3	PIN	1	BRASS	SILVER 5μ"
2	INSULATOR	1	PTFE	---
1	BODY	1	BRASS	NICKEL, 100μ"
#	DESCRIPTION	QTY	MATERIAL	FINISH

CUSTOMER OUTLINE DRAWING <hr/> ALL DIMENSIONS ARE REFERENCE ONLY <hr/> UNLESS OTHERWISE SPECIFIED: DIMENSIONS ARE IN INCHES AND [MILLIMETERS]		<b>RoHS</b> <b>COMPLIANT</b>	<b>RFconnectors</b> DIVISION OF RF INDUSTRIES, LTD.	7610 MIRAMAR RD. SAN DIEGO, CA 92126 (858) 549-6340 (858) 549-6345 FAX
DRAWN C. ZUNIGA 08/26/08 CHECKED  ORJ DRAWN C. ZUNIGA 9/10/02		<b>MINI UHF PLUG</b> CRIMP		PROPRIETARY AND CONFIDENTIAL THIS DRAWING CONTAINS INFORMATION PROPRIETARY TO RF INDUSTRIES. ANY UNAUTHORIZED USE OF THIS DRAWING IS EXPRESSLY PROHIBITED WITHOUT WRITTEN PERMISSION FROM RF INDUSTRIES. ANY VIOLATION IS PUNISHABLE UNDER U.S. COPYRIGHT LAWS.
SIZE <b>A</b>		CABLE GROUP <b>C</b>	DWG NO. <b>RFU-600-6</b>	REV <b>A</b>
SCALE: NTS		ENGINEERING ID: 001560		SHEET 1 OF 1