

THIS COPY IS PROVIDED ON A RESTRICTED BASIS AND IS NOT TO BE USED IN ANY WAY DETRIMENTAL TO THE INTERESTS OF PANDUIT CORP.

PANDUIT PART #	STUD SIZE		DIMENSIONS in. [mm]				
	ENGLISH	METRIC	L ± .03 [0,8]	W ± .01 [0,3]	C ± .02 [0,5]	M ± .03 [0,8]	H ± .01 [0,3]
PM1-3F*	--	M3	.63 [16,00]	.23 [5,84]	.22 [5,59]	.49 [12,45]	.13 [3,30]
P18-6F	#6	M3,5	.63 [16,00]	.30 [7,62]	.21 [5,33]	.49 [12,45]	.15 [3,81]
P18-6FN*	#6	M3,5	.63 [16,00]	.24 [6,10]	.19 [4,83]	.49 [12,45]	.15 [3,81]
P18-8F	#8	M4	.69 [17,53]	.32 [8,13]	.25 [6,35]	.53 [13,46]	.17 [4,32]
P18-10F	#10	--	.71 [18,03]	.35 [8,89]	.25 [6,35]	.55 [13,97]	.20 [5,08]
P18-10FN*	#10	--	.71 [18,03]	.31 [7,87]	.25 [6,35]	.55 [13,97]	.20 [5,08]
PM1-5F*	--	M5	.71 [18,03]	.35 [8,80]	.26 [6,60]	.55 [13,97]	.20 [5,08]
P18-14F	1/4"	M6	.88 [22,35]	.44 [11,18]	.33 [8,38]	.63 [16,00]	.27 [6,86]

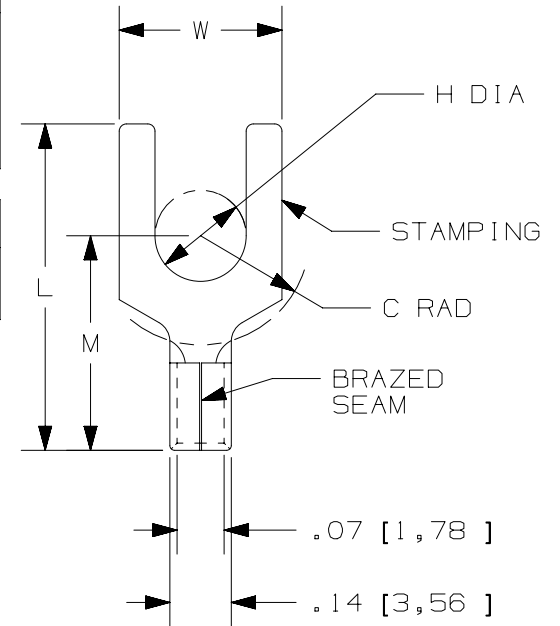
\*NOT CSA CERTIFIED

NOTES:

- UL LISTED & CSA CERTIFIED FOR:
  - #22-16 AWG [ 0,5-1,5 mm<sup>2</sup> ] SOLID OR STRANDED COPPER WIRE
  - 302°F [150°C] MAX. OPERATING TEMPERATURE
  - 2000 VOLTS MAX
- SEE [www.panduit.com](http://www.panduit.com) FOR PACKAGE QUANTITIES
- MATERIAL:
  - STAMPING: .032" [0,8] THK COPPER, TIN PLATED
- DIMENSIONS IN BRACKETS ARE METRIC EQUIVALENT
- WIRE STRIP LENGTH: 9/32" <sup>+1/32</sup><sub>-0</sub> [7,1mm <sup>+0,8</sup><sub>-0</sub> ]

UL & CSA TOOLS
CT-100A CT-200 CT-600-A (CT-570CH) CT-1570 CT-2500 (CT-2570CH)

PANDUIT APPROVED TOOLS
CT-160 CT-260



TITLE		#22-16 BARREL NON-INSULATED FORK	
CUSTOMER DRAWING			
ITEM REVISION NAME		N41461BA/10	
DATASET FILE NAME		N41461BA_DC/10	
UNLESS OTHERWISE SPECIFIED, DIMENSIONAL TOLERANCES ARE: IN [ mm ]		MATERIAL: SEE NOTES	
.X ± .XXX ± .XX ± ANGLES ±		DRAWING NUMBER: A41461	
THIRD ANGLE PROJECTION		SHEET 1 OF 1	
DRAWN BY	DATE	CHK	SCALE
DRL	-		N.T.S.
REV	DATE	BY	CHK
DESCRIPTION		ECN	

REV	DATE	BY	CHK	APR	DESCRIPTION	ECN
10	5/17	JHNU	TMR	RGB	ADDED CSA BACK TO DWG, UPDATED TOOL CHART	N41461BA-A41461
09	06/14	MBY	JHNU	RGB	REVISED NOTES, MOVED TOOLS TO TABLE, REVISED CERTIFICATION	N41461BA-A41461
08	07.20.12	BDK	LCA	VMB	ADDED PM1-3F AND PM1-5F. ADDED METRIC EQUIVALENT. REVISED INSTALLATION TOOLS NOTE. BROUGHT DRAWING TO CURRENT STANDARDS.	N41461BA-DC